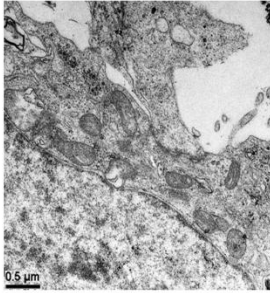
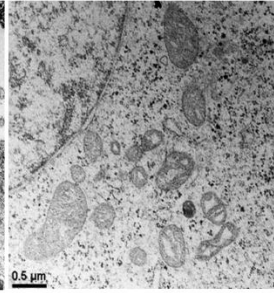


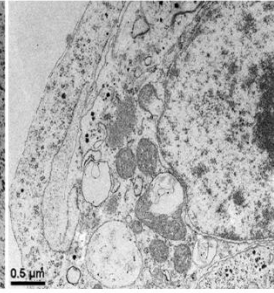
WT



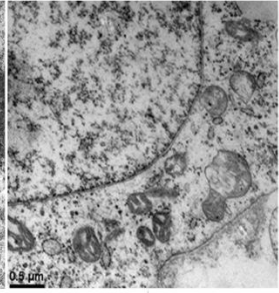
Smad5 KO



pre-Smad5 KO_Smad5



post-Smad5 KO_Smad5



Supplementary information, Figure S12. *Smad5* KO induces irreversible mitochondrial morphology changes. Electron microscopy images show that re-expressing *Smad5* in *Smad5* KO hESCs through lentiviral infection could not rescue mitochondrial morphology caused by *Smad5* KO. While mitochondrial morphology could be rescued by pre-expression of *Smad5*. Scale bar, 0.5 μm .