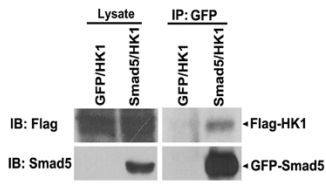
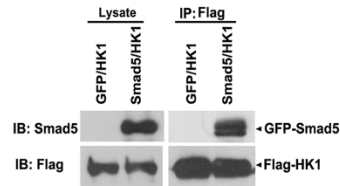
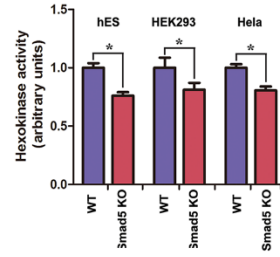
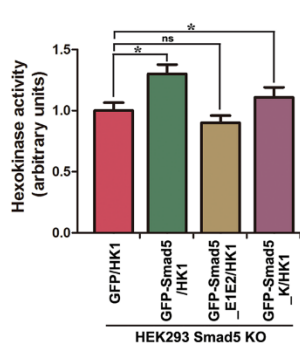
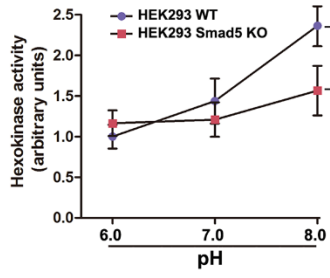
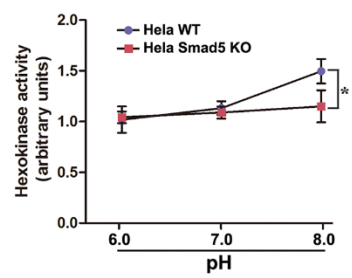
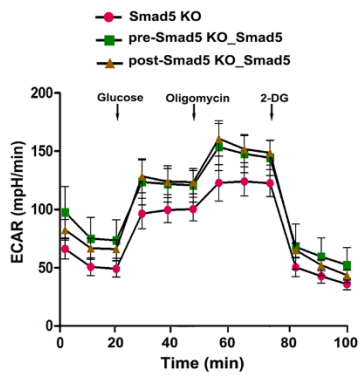
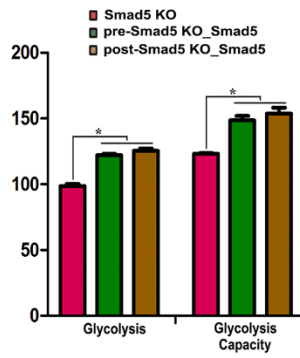


A**B****C****D****E****F****G****H**

Supplementary information, Figure S15. Smad5 interacts with HK1. **(A, B)** HEK293 cells co-expressing of *Flag-HK1* and *GFP* or *GFP-Smad5* were immunoprecipitated with anti-GFP **(A)** or anti-Flag **(B)** antibody, and specific interaction of GFP-Smad5 with Flag-HK1 is shown by western blotting. **(C)** Hexokinase enzyme activity was measured in cytosolic fractions of WT and *Smad5* KO hES, HEK293 and HeLa cells. **(D)** Ectopic expressing of *GFP-Smad5* and *GFP-Smad5_K* potentiates hexokinase enzyme activity in HEK293 cells. Data are presented as mean \pm s.e.m of three independent experiments. * $p < 0.05$. **(E-F)** WT and *Smad5* KO HEK293 cells **(E)** and HeLa cells **(F)** were incubated in buffers at a pH of 6.0, 7.0 or 8.0 buffer for 30 minutes, followed by hexokinase enzyme activity detection. Data are presented as mean \pm s.e.m of three independent experiments. * $p < 0.05$. **(G)** Extracellular acidification rate (ECAR) measured in hESCs was rescued by either post-knockout re-expression or pre-knockout overexpression of *Smad5* (n = 6 each). **(H)** Statistics of glycolysis and glycolysis capacity in **G**. Data are represented as mean \pm s.e.m of 6 independent experiments. Unpaired two-tailed Student's t-test. * $p < 0.05$.