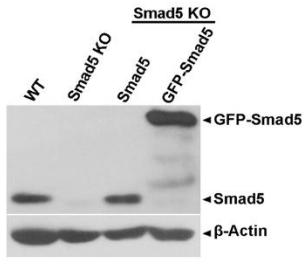
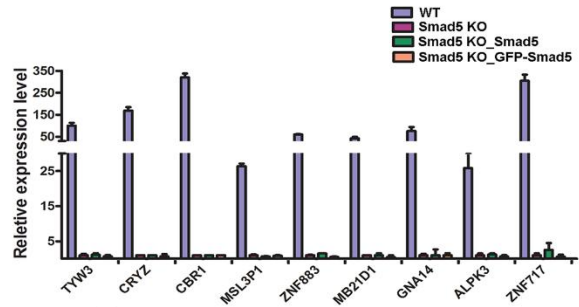
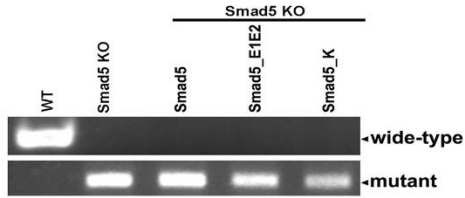
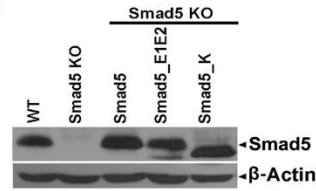
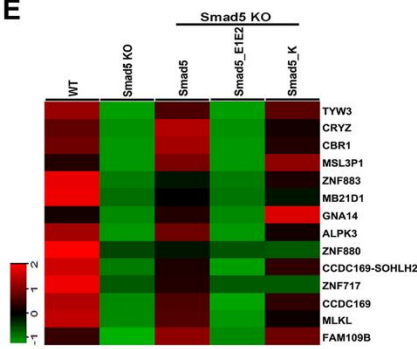
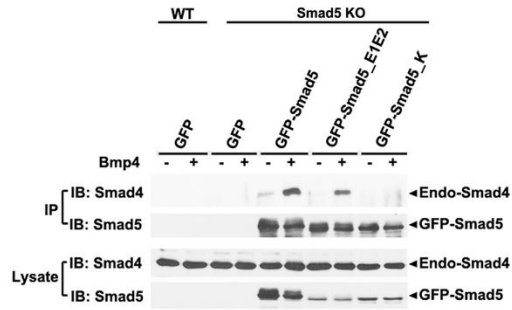
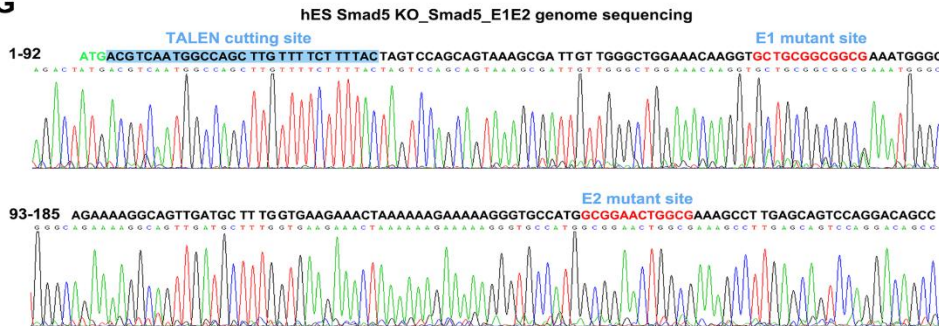


A**B****C****D****E****F****G**

Supplementary information, Figure S9. Chronic metabolic adaptation of *Smad5* KO hESCs. **(A)** Western blotting confirms the reintroducing of *Smad5* or GFP-*Smad5* in *Smad5* KO hESCs through lentiviral infection. **(B)** Reintroducing of *Smad5* or GFP-*Smad5* in *Smad5* KO hESCs fails to rescue the mRNA expression of those downregulated genes caused by *Smad5* KO. Each quantification was made from 3 independent images. Data are presented as mean \pm s.e.m. **(C)** Genomic DNA PCR results showing *Smad5* KO efficiency in pre-rescued hESCs. **(D)** Western blotting showing preserved ectopic *Smad5*, *Smad5_E1E2* and *Smad5_K* expression after endogenous *Smad5* KO. **(E)** Heatmap of expression changes in WT, *Smad5* KO and pre-rescue hESCs. **(F)** HEK293 cells stably expressing *GFP*, *GFP-Smad5*, *GFP-Smad5_E1E2* or *GFP-Smad5_K* were stimulated with BMP4 for 1 hr. After immunoprecipitation with the GFP antibody, their interactions with *Smad4* were detected by western blotting. **(G)** Genome sequencing of pre-rescued *Smad5_E1E2* hESCs.