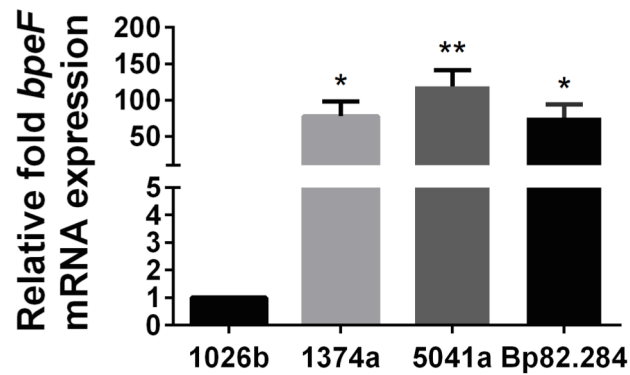


1 **Figure S2. Clinical and laboratory strains containing chromosomal *bpeS*_{P29S} express high-**
2 **levels of *bpeF*.**



16 Total RNA was isolated from cells of the indicated strains grown to mid-log phase in LB
17 medium. The expression of *bpeF* was measured by RT-qPCR and one-way ANOVA was
18 performed with Dunnet's post-test to determine statistical significance compared to the 1026b
19 control. Bars represent mean expression of at least two biological replicates with one standard
20 deviation. The data show that presence of *bpeS*_{P29S} allele caused *bpeF* over-expression.
21 (**, $p < 0.01$; *, $p \leq 0.05$).