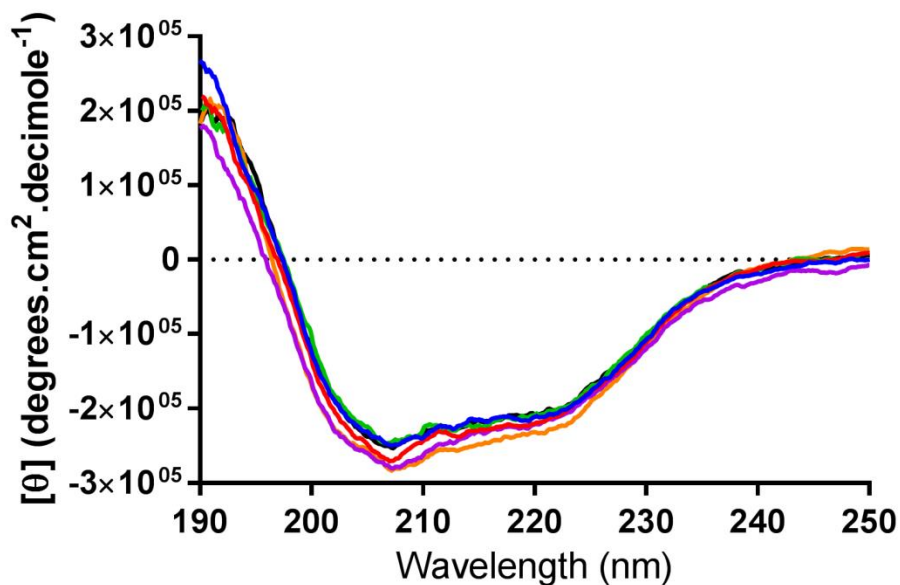
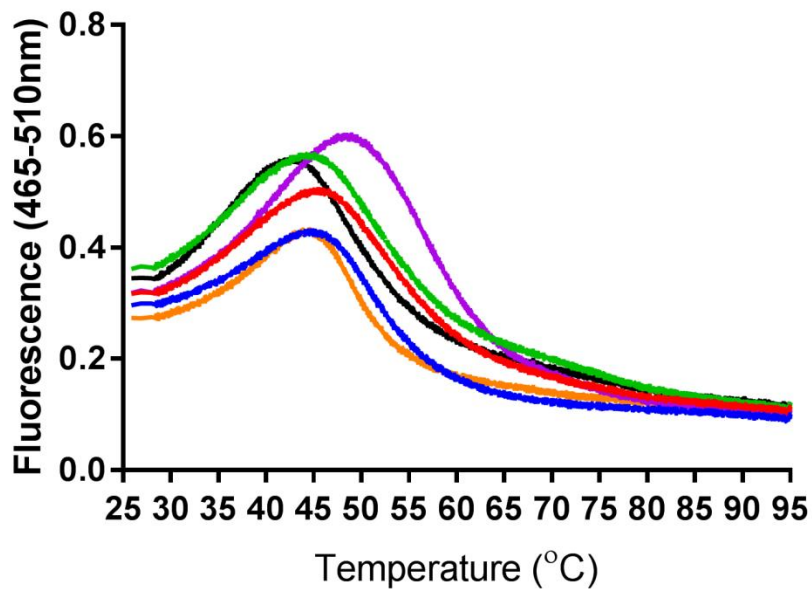


Figure S2

(i)



(ii)



- SEIX WT
- SEIX E154A
- SEIX K156A
- SEIX Q159A
- SEIX D161A
- SEIX EKQD-A

SEIX mutant	T_m ($^{\circ}$ C)
WT	44.88
E154A	45.62
K156A	43.70
Q159A	48.80
D161A	43.89
EKQD-A	42.63