

ADVANCED BIOSYSTEMS

Supporting Information

for *Adv. Biosys.*, DOI: 10.1002/adbi.201700054

Integrated Microfluidic System for Gene Silencing and Cell Migration

Zongbin Liu, Xin Han, Qing Zhou, Rui Chen, Shelby Fruge, Myeong Chan Jo, Yuan Ma, Ziyin Li, Kenji Yokoi, and Lidong Qin**

Supporting Information

Integrated microfluidic system for gene silencing and cell migration

Zongbin Liu, Xin Han, Qing Zhou, Rui Chen, Shelby Fruge, Myeong Chan Jo, Yuan Ma, Ziyin Li, Kenji Yokoi*, and Lidong Qin*

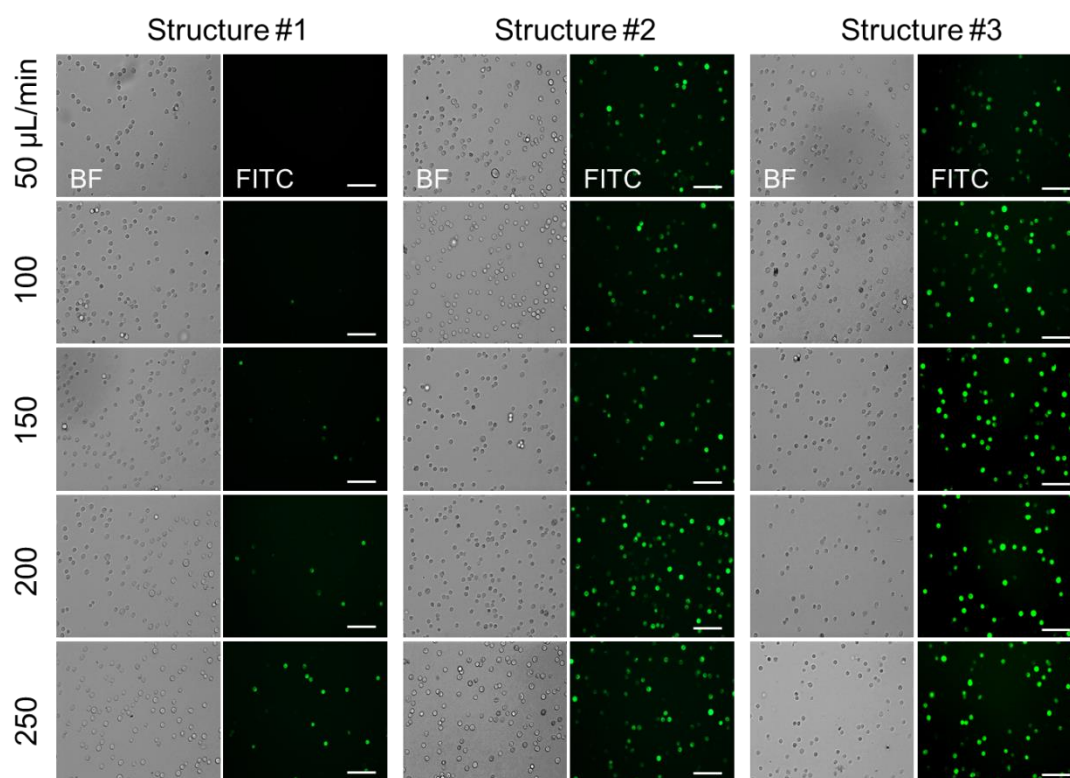


Figure S1. Images of FITC-dextran (70K) delivered cells using different delivery structures. Scale bar, 100 μm .

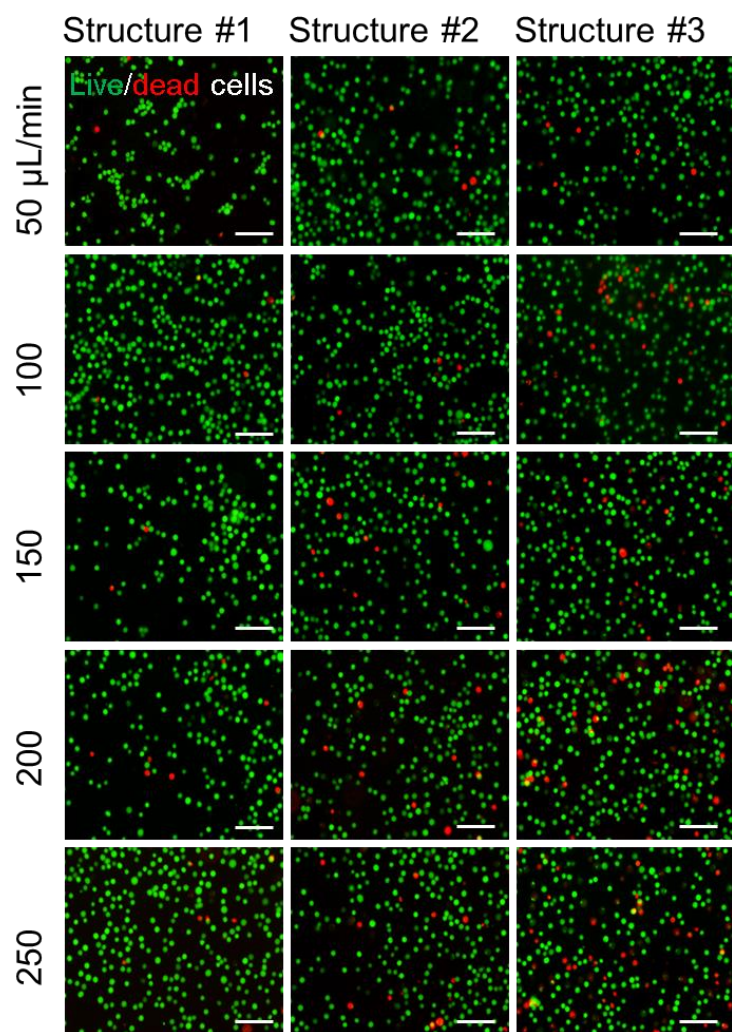


Figure S2. Images of live/dead staining of delivered cells using different delivery structures and flow rates. Green dots represent live cells and red dots indicate dead cells. Scale bar, 100 μm .

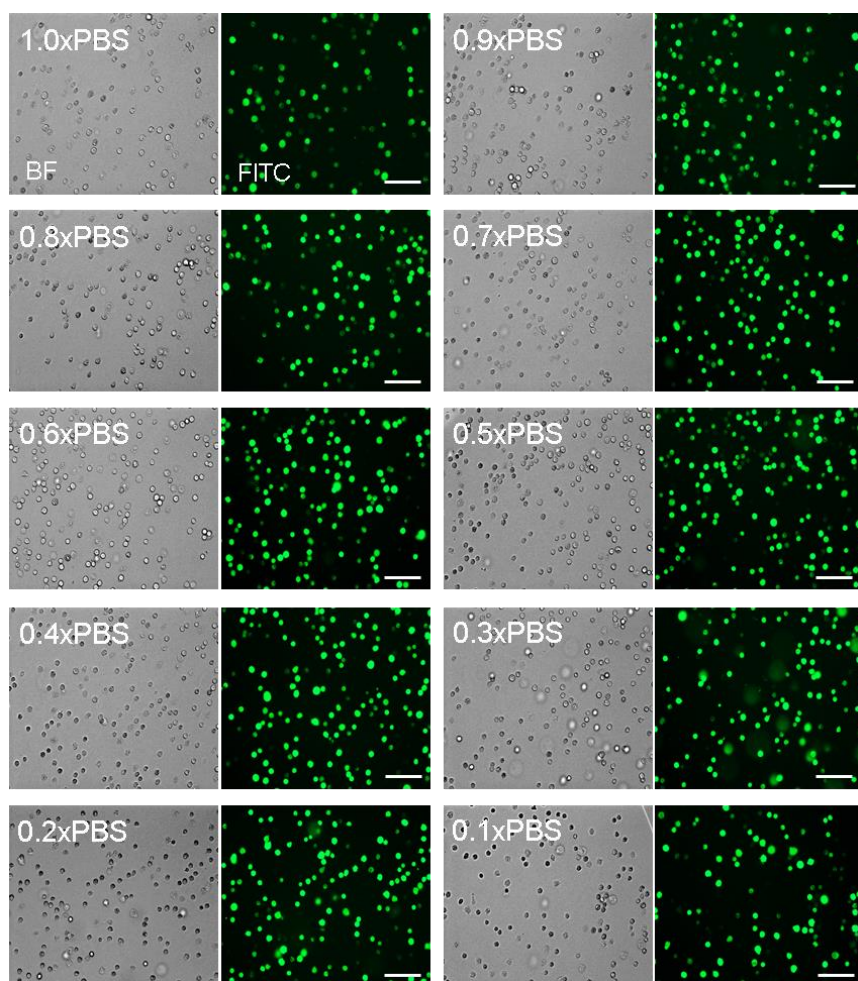


Figure S3. Images of FITC-dextran (70K) delivered cells in different PBS solutions. Scale bar, 100 μm .

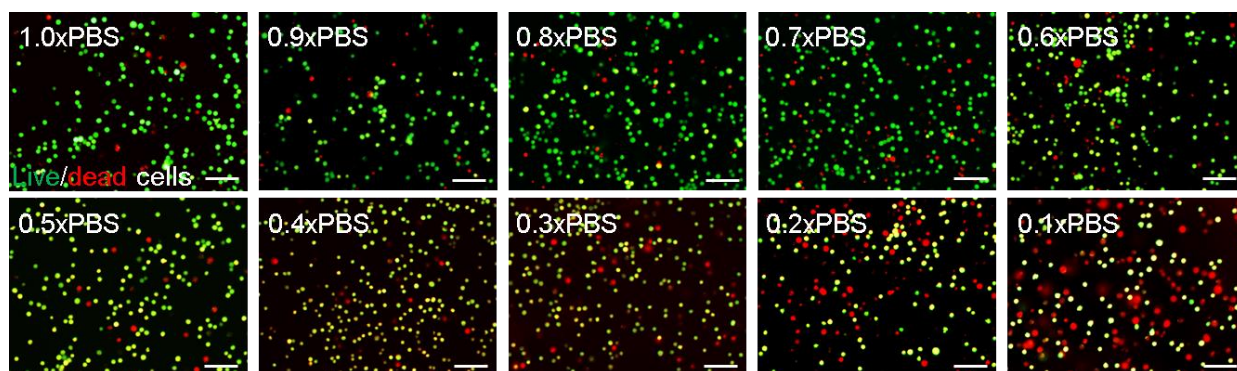


Figure S4. Images of live/dead staining of delivered in different PBS solutions. Green dots represent live cells and red dots indicate dead cells. Scale bar, 100 μm .

Movie S1. Cell passage through the structure #1.

Movie S2. Cell passage through the structure #2.

Movie S3. Cell passage through the structure #3.

Movie S4. Migration of control MDA-MB-231-GFP cells in the presence of 10-20% FBS gradient.

Movie S5. Migration of MDA-MB-231-GFP cells, knocked down by siRNA CFL-1 in the presence of 10-20% FBS gradient.