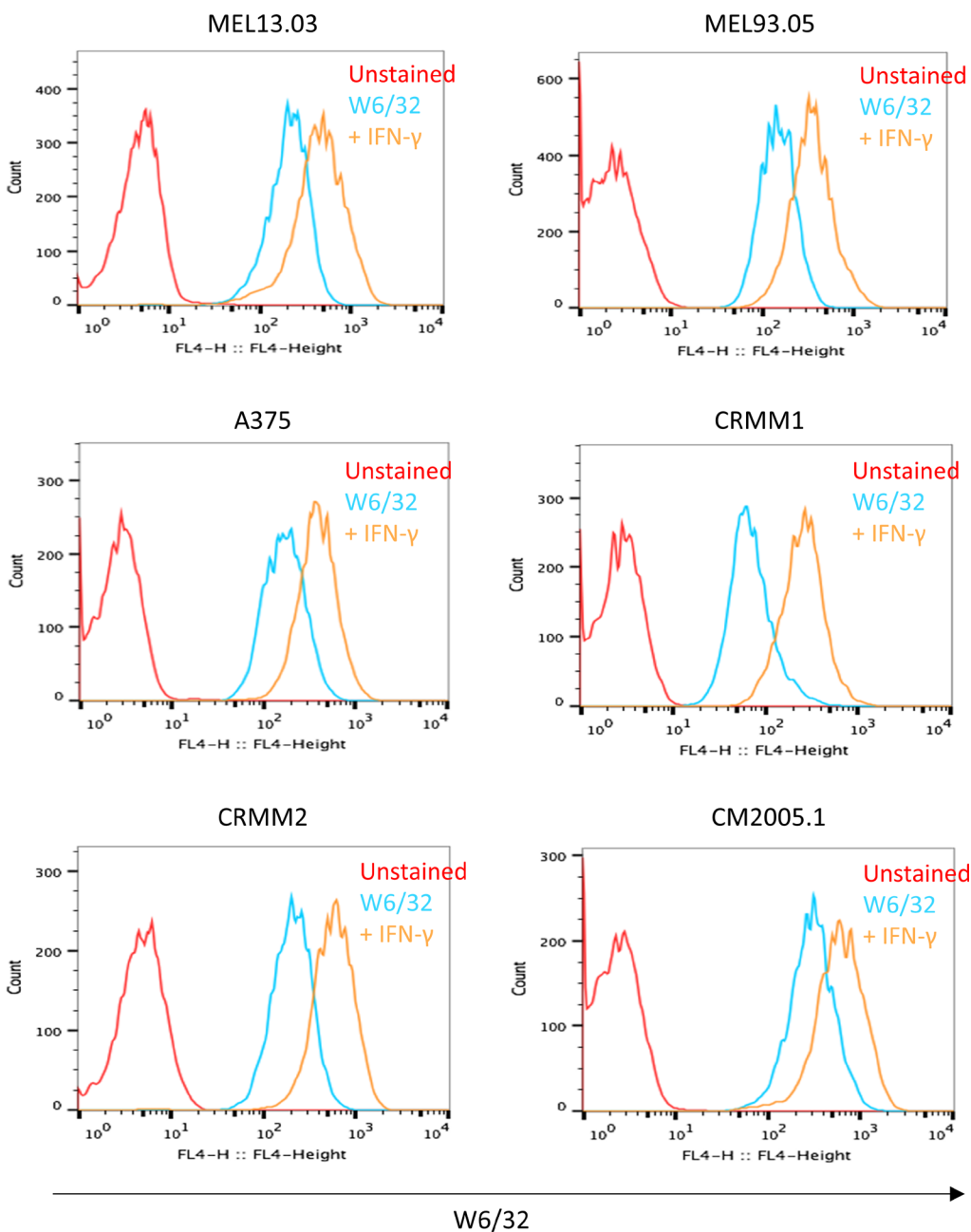


PD-L1/PD-1 expression and tumor-infiltrating lymphocytes in conjunctival melanoma

SUPPLEMENTARY MATERIALS



Supplementary Figure 1: The confirmation of IFN-γ effect on cutaneous (MEL13.03, MEL93.05 and A375) and conjunctival melanoma (CRMM1, CRMM2 and CM2005.1) cell lines using the anti-human HLA-A, B, C antibody (W6/32). The cells were treated with IFN-γ (100 IU/ml) for 48 h. Histograms with red, blue and brown line represent unstained, W6/32 expression, and the effect of IFN-γ stimulation on W6/32, respectively.

Supplementary Table 1: Correlation between different infiltrating immune cells (T cells and macrophages)

		CD3 ⁺ CD8 ⁺	CD3 ⁺ CD8 ⁻	CD3 ⁺ CD8 ⁻ Foxp3 ⁻	CD3 ⁺ CD8 ⁻ Foxp3 ⁺	CD68	CD68 ⁺ CD163 ⁺
CD3	<i>r</i>	0.84	0.95	0.88	0.84	0.63	0.48
	<i>P</i>	< 0.001	< 0.001	< 0.001	< 0.001	0.001	0.01
CD3 ⁺ CD8 ⁺	<i>r</i>		0.69	0.63	0.57	0.59	0.46
	<i>P</i>		< 0.001	0.001	0.002	0.001	0.02
CD3 ⁺ CD8 ⁻	<i>r</i>			0.93	0.84	0.53	0.38
	<i>P</i>			< 0.001	< 0.001	0.005	0.053
CD3 ⁺ CD8 ⁻ Foxp3 ⁻	<i>r</i>				0.65	0.51	0.34
	<i>P</i>				< 0.001	0.01	0.09
CD3 ⁺ CD8 ⁻ Foxp3 ⁺	<i>r</i>					0.49	0.46
	<i>P</i>					0.01	0.02
CD68	<i>r</i>						0.87
	<i>P</i>						< 0.001

r = two-tailed Spearman correlation coefficient, with 26 observations. *P* ≤ 0.05 are in italics.

Supplementary Table 2: Secondary antibodies used in IF

Antibody	Specificity	Isotype	Company	Catalogue number	Dilutions
AlexaFluor 488	mouse	IgG	Life Technologies	A-11001	1:300
AlexaFluor 546	rabbit	IgG	Life Technologies	A-11010	1:300
AlexaFluor 488	goat	IgG	Life Technologies	A-11055	1:300
AlexaFluor 488	rabbit	IgG	Life Technologies	A-11034	1:300
AlexaFluor 546	mouse	IgG2b	Life Technologies	A-21143	1:300
AlexaFluor 647	mouse	IgG1	Life Technologies	A-21240	1:300
AlexaFluor 488	mouse	IgG2a	Life Technologies	A-21131	1:300
AlexaFluor 546	mouse	IgG1	Life Technologies	A-21123	1:300
AlexaFluor 647	mouse	IgG2a	Life Technologies	A-21241	1:300
AlexaFluor 488	mouse	IgG1	Life Technologies	A-21121	1:300