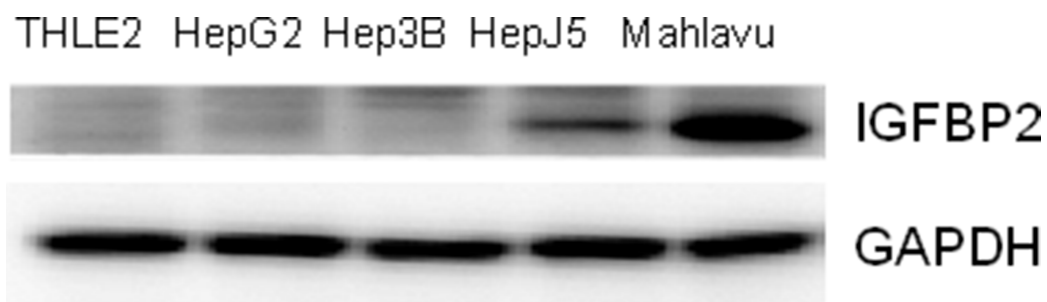


## IGFBP2 plays an important role in heat shock protein 27-mediated cancer progression and metastasis

### SUPPLEMENTARY MATERIALS



**Supplementary Figure 1: IGFBP2 expression in HCC cells.** IGFBP2 protein expression was determined by western blotting in normal liver cell line and HCC cell lines. GAPDH was used as an internal control.