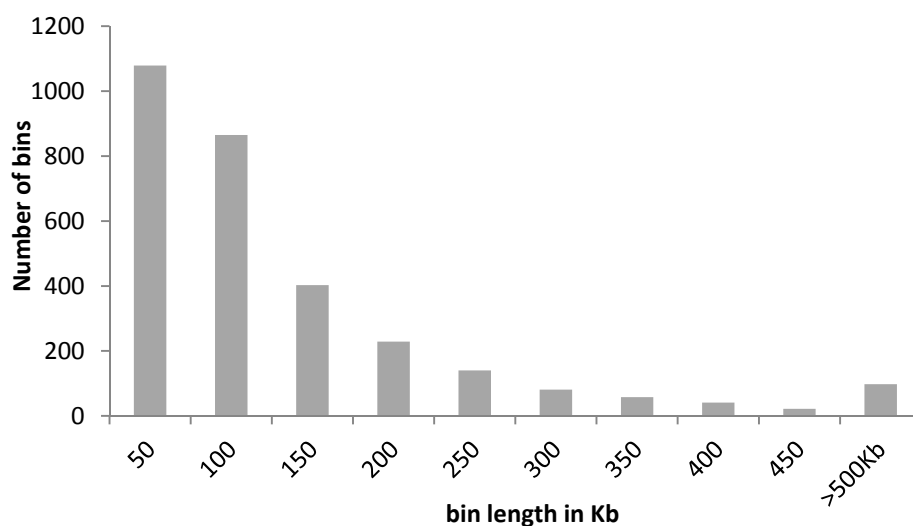


QTL mapping using an ultra-high-density SNP map reveals a major locus for grain yield in an elite rice restorer R998

Manshan Zhu^{1,2+} Dilin Liu^{1,2+} Wuge Liu^{1,2} Dan Li^{1,2} Yilong Liao^{1,2} Jinhua Li^{1,2}
Chongyun Fu^{1,2} Fuhong Fu^{1,2} Huijun Huang^{1,2} Xueqin Zeng^{1,2} Xiaozhi Ma^{1,2} Feng
Wang^{1,2} *

Table S1. List of InDel markers developed for *qGY8*

Primer	Forward	Reverse	Genotype score (bp, R998 vs Francis)	Indel position
N2	CTGGCTTACCCTCAAAGCAT	AGCTGGAGACGATTGCTTG	-24	16467312
N12	TCCCCAACAATTGATTCTC	TTTTGATTGTTGATTCGAGCTT	22	16471541
N49	ACCCTACGGTACACCCCTCT	CAACCCAGCTAGGGCTTACA	-44	16491993
N104	TTCATTATCCCGCGCATTAC	GAGTGGGAAGCGACATCGT	36	16533954
N110	CCGAAGTGATGATGGGAGAG	CCTCCGTTCCCTACTTCAA	-30	16542634
N153	GCGCCATAAATATAGCTACACC	AACGGTGGAGGATGAAAGGT	-20	16559094
N184	GATGTTGTCCGCAGAGATGA	CTCCTCGACAGCATCCACTC	-66	16587529

**Figure S1. Frequency distribution of bin marker length.**

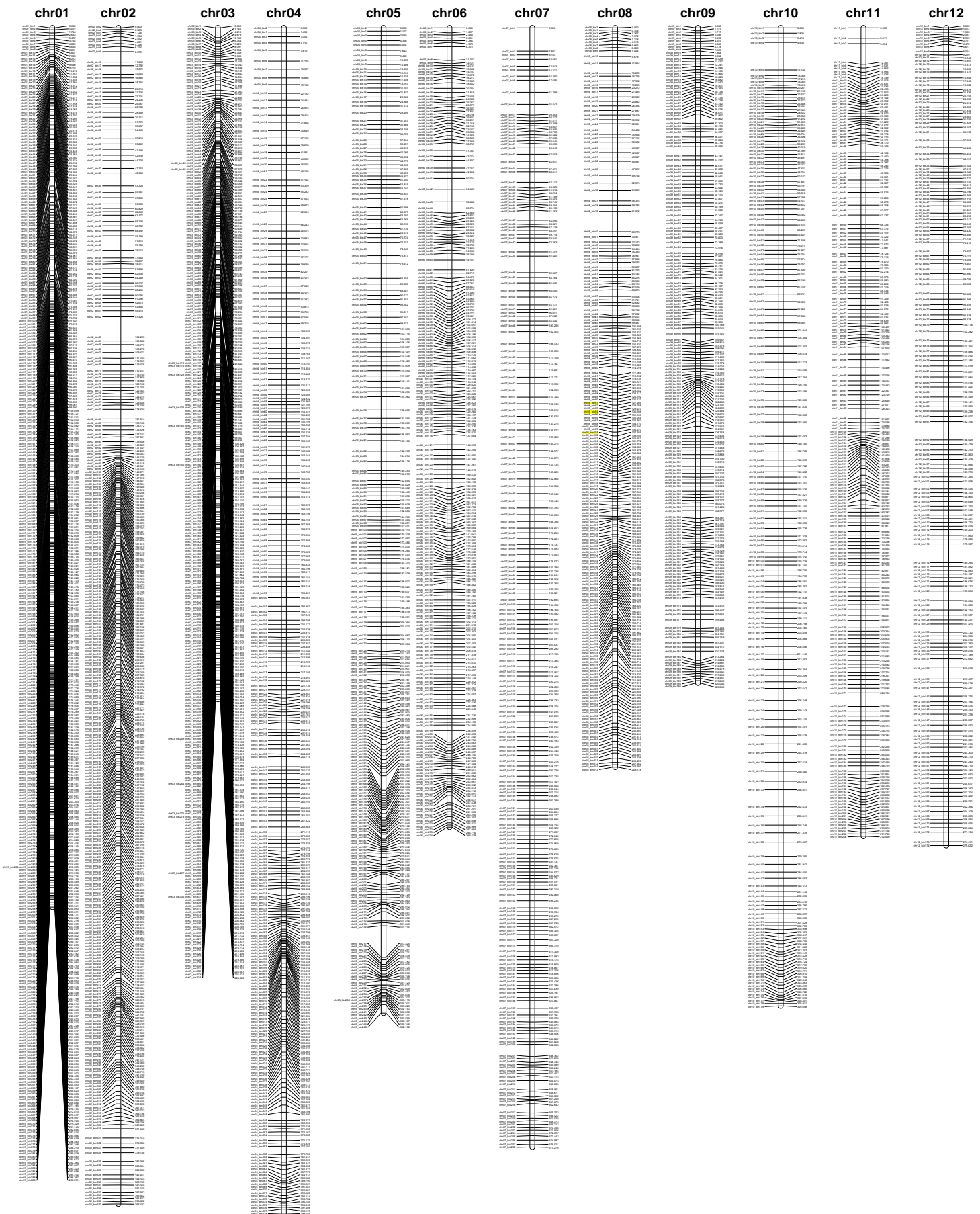


Figure S2. Genetic map constructed from the RILs population of R998 x Francis.

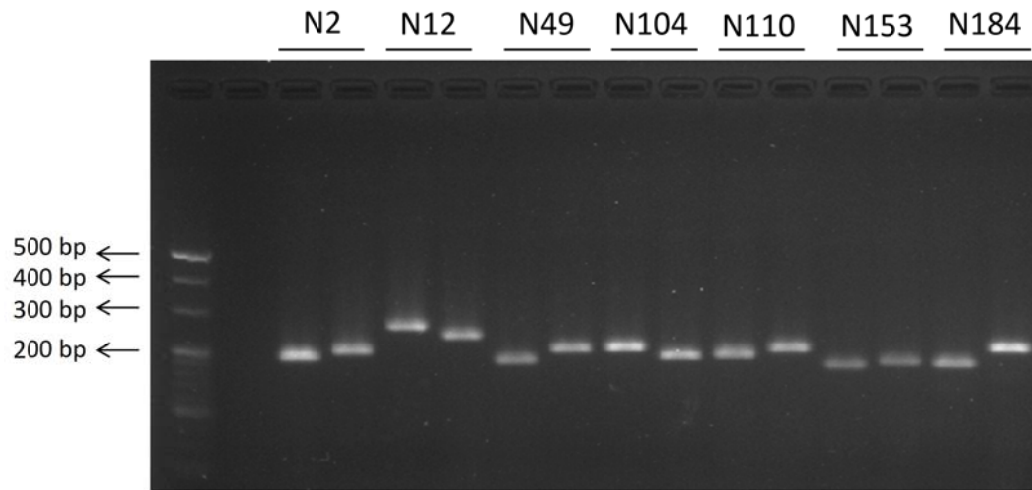


Figure S3. Full-length gel for Fig. 6