

Title: Dual role of carcinoembryonic antigen-related cell adhesion molecule 6 expression in predicting the overall survival of gastric cancer patients.

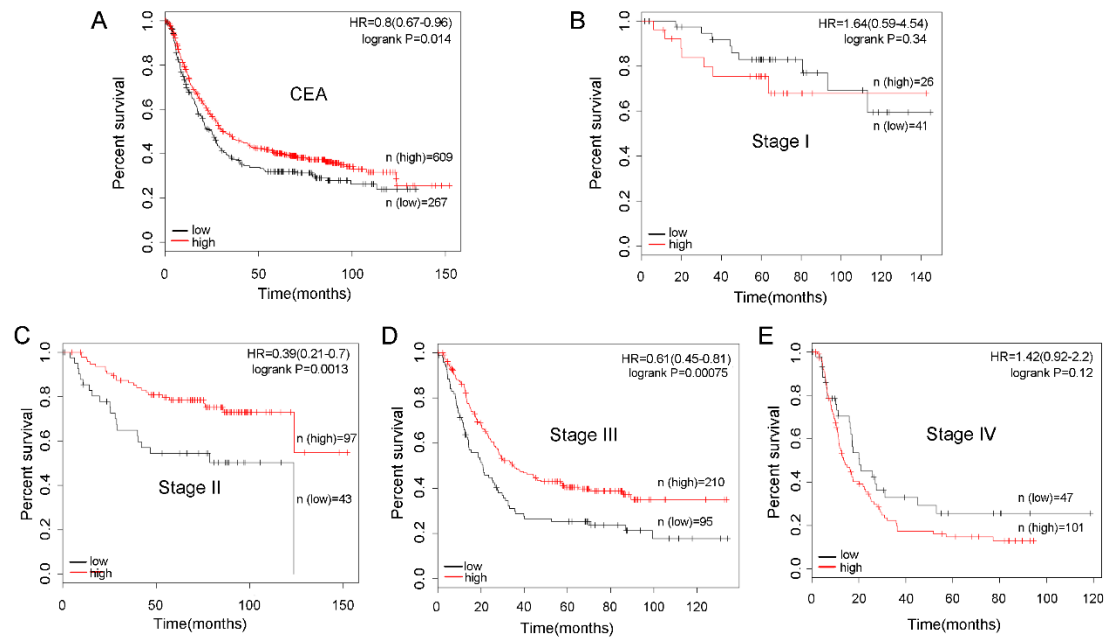
Authors: Mingde Zang^{1,*}, Lei Hu^{1,*}, Shu Cao¹, Zhiyuan Fan¹, Li Pang¹, Jianfang Li¹, Liping Su¹, Chen Li¹, Wentao Liu¹, Qinlong Gu¹, Zhenggang Zhu¹, Min Yan¹, Bingya Liu^{1,†}

Affiliate: ¹Department of General Surgery, Shanghai Key Laboratory of Gastric Neoplasms, Shanghai Institute of Digestive Surgery, Ruijin Hospital, Shanghai Jiao Tong University School of Medicine, Shanghai 200025, People's Republic of China.

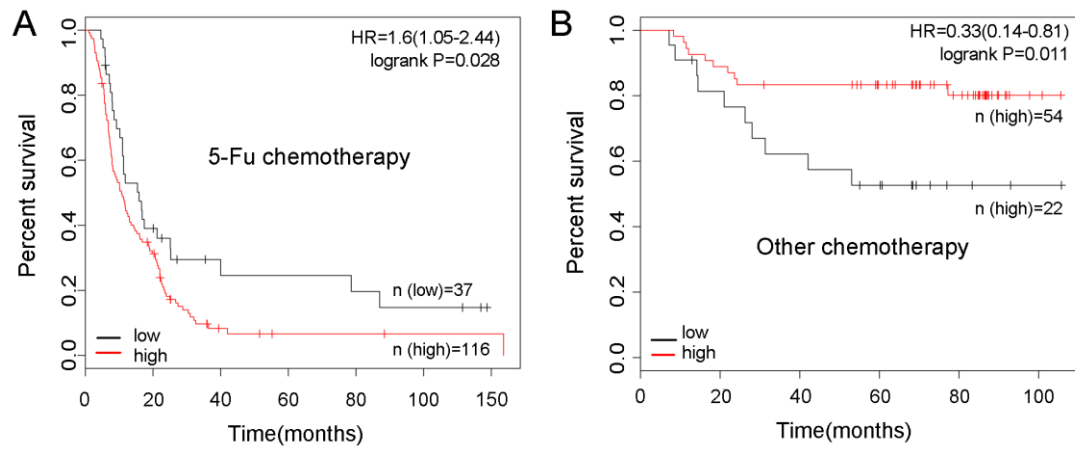
* These authors contributed equally to this work.

†**Corresponding author:** Bingya Liu; E-mail: liubingya@sjtu.edu.cn; Tel: 86-21-64670644; Fax: 86-21-64393909.

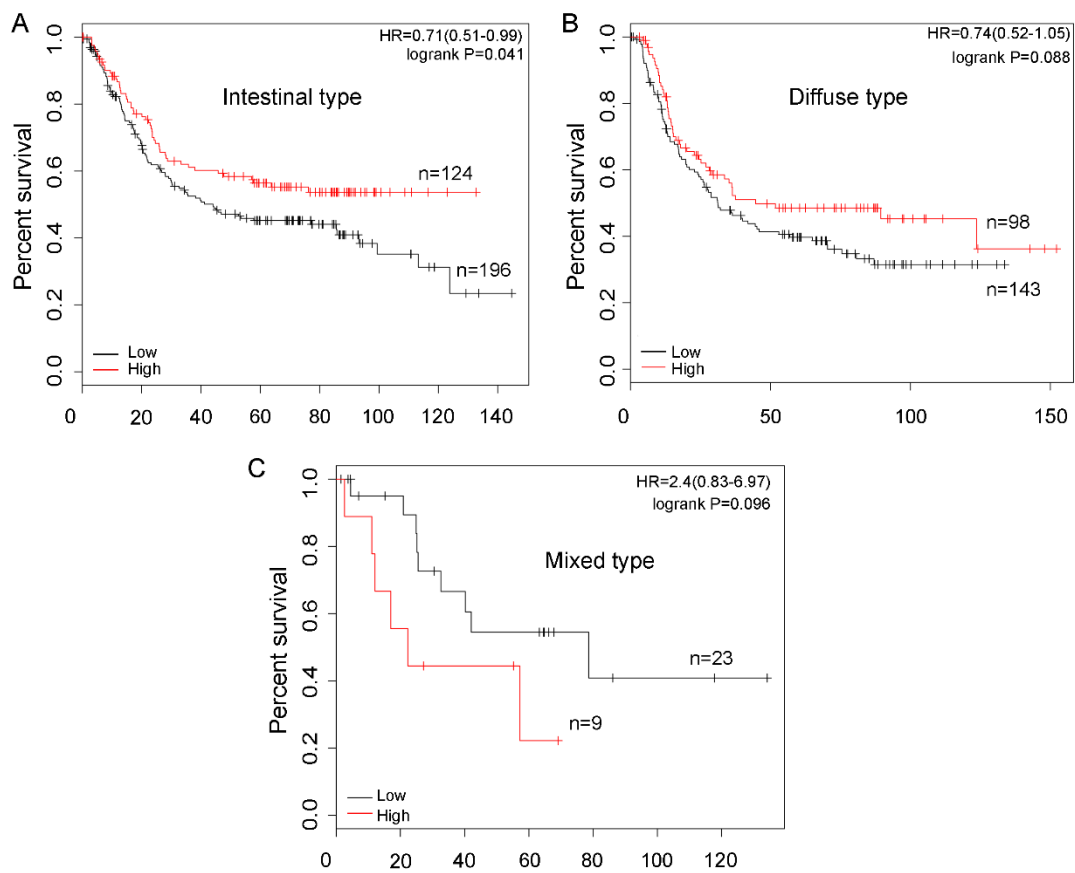
Supplementary figures



Supplementary figure S1. Role of CEA expression in predicting the overall survival in patients with gastric cancer. Kaplan-Meier curves of overall survival according to (A) CEA expression, (B) CEA expression in Stage I GC, (C) CEA expression in Stage II GC, (D) CEA expression in Stage III GC, and (E) CEA expression in Stage IV GC.



Supplementary figure S2. Role of CEA expression, and chemotherapy with 5-fluorouracil in predicting overall survival in patients with gastric cancer. Kaplan-Meier curves of OS according to CEA expression in patients who were treated with adjuvant chemotherapy (**A**) with and (**B**) without 5-fluorouracil.



Supplementary figure S3. Role of CEACAM6 expression in predicting the overall survival in patients with gastric cancer. Kaplan-Meier curves of OS according to (A) CEACAM6 expression in intestinal-type GC, (B) CEACAM6 expression in diffuse-type GC, (C) CEACAM6 expression in mixed-type GC.

Supplementary table

Table S1. Association between CEA expression and overall survival of gastric cancer patients (n=876) (data from <http://kmplot.com/analysis/>)

Parameters		Cases	Median Survival(months)	HR(95%CI)	P value
All patients	Low	267	24.9	0.8 (0.67-0.96)	0.014
	High	609	31		
I	Low	41	93.2	1.64 (0.59-4.54)	0.34
	High	26	63.7		
II	Low	43	25.5	0.39 (0.21 -0.7)	0.0013
	High	97	85.8		
III	Low	95	20.9	0.61 (0.45-0.81)	0.00075
	High	210	35.1		
IV	Low	47	20.3	1.42 (0.92-2.2)	0.12
	High	101	13.73		
5-Fu chemotherapy	Low	37	15.9	1.6 (1.05-2.44)	0.028
	High	116	10.7		
No 5-Fu chemotherapy	Low	22	NA	0.33 (0.14-0.81)	0.011
	High	54	NA		

NA: Not Available. HR: Hazard Ratio.