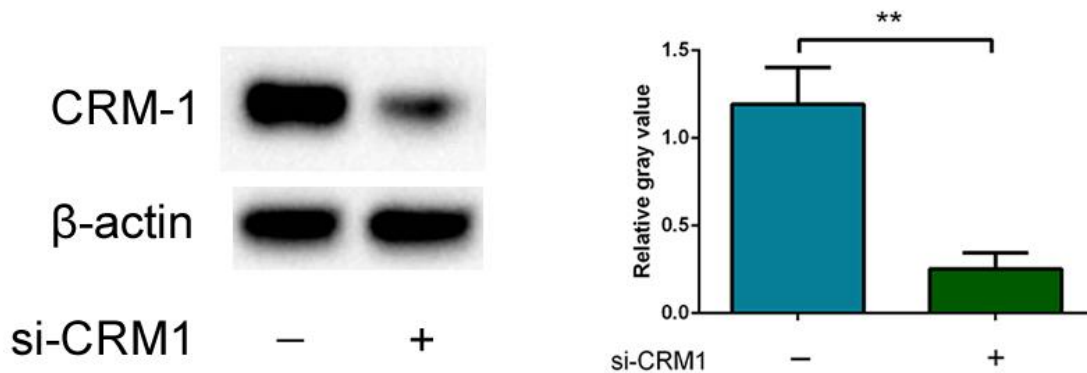
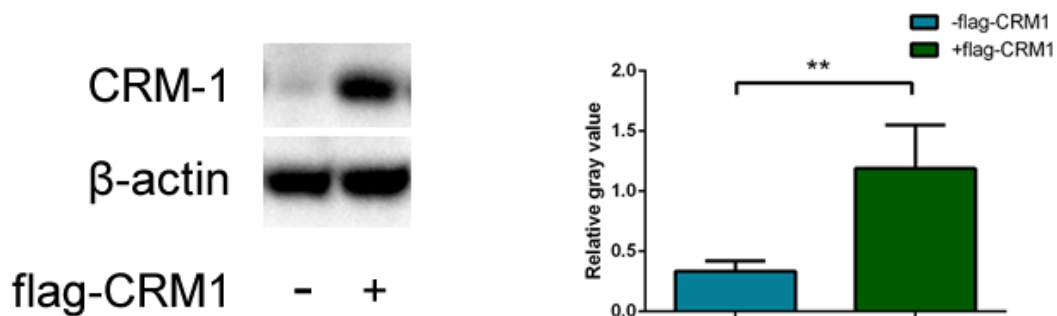


## Supplementary Figure 1



**Supplementary Figure 1. CRM-1 expression in the total cellular protein were validated to be downregulated after siRNA transfection.** siRNA1 and siRNA2 were utilized to transfect QBC939 cells and what's shown is result from siRNA1. The relative gray value of CRM-1 with respect to internal control protein  $\beta$ -actin were evaluated and statistically analyzed. (\*\*: p<0.01)

## Supplementary Figure 2



**Supplementary Figure 2. CRM-1 expression in the total cellular protein were validated to be upregulated after flag-CRM1 transfection.** Flag-CRM1 and its control vector was used to transfect QBC939 cells. The relative gray value of CRM-1 with respect to internal control protein  $\beta$ -actin was evaluated and statistically analyzed. (\*\*: p<0.01)