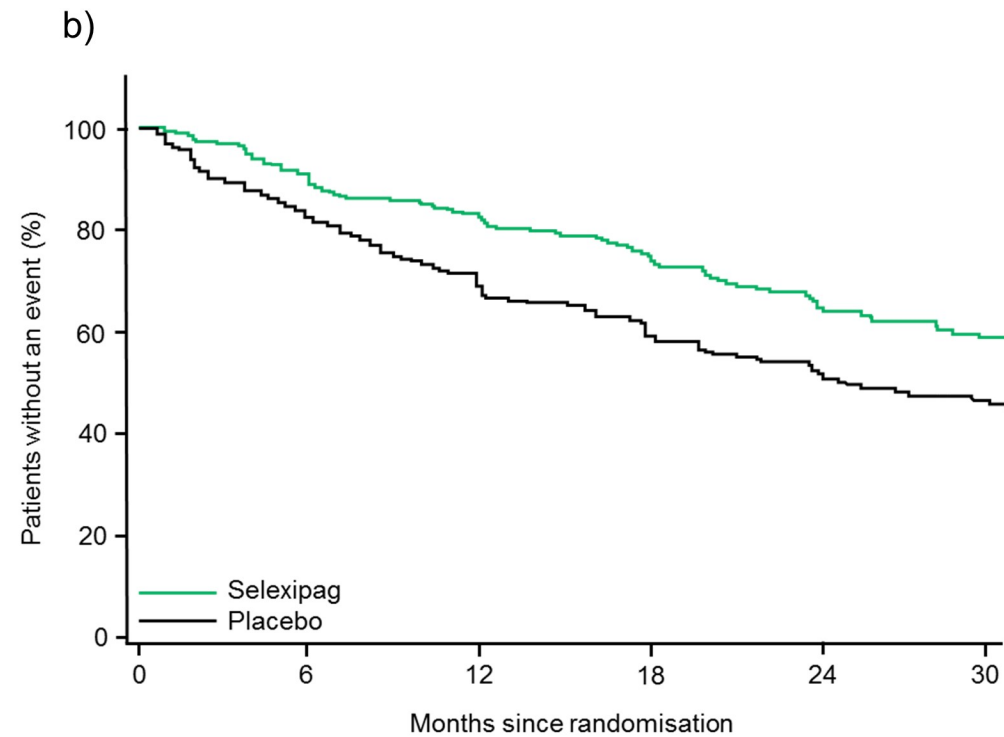


	Patients at risk					
	0	6	12	18	24	30
Selexipag	167	129	102	70	44	21
Placebo	167	114	92	57	38	21



	Patients at risk					
	0	6	12	18	24	30
Selexipag	325	258	204	143	104	68
Placebo	350	268	212	136	90	54

Supplementary figure 1. Effect of selexipag on the primary composite endpoint of morbidity/mortality in patients with (a) PAH-CTD or (b) IPAH/HPAH.