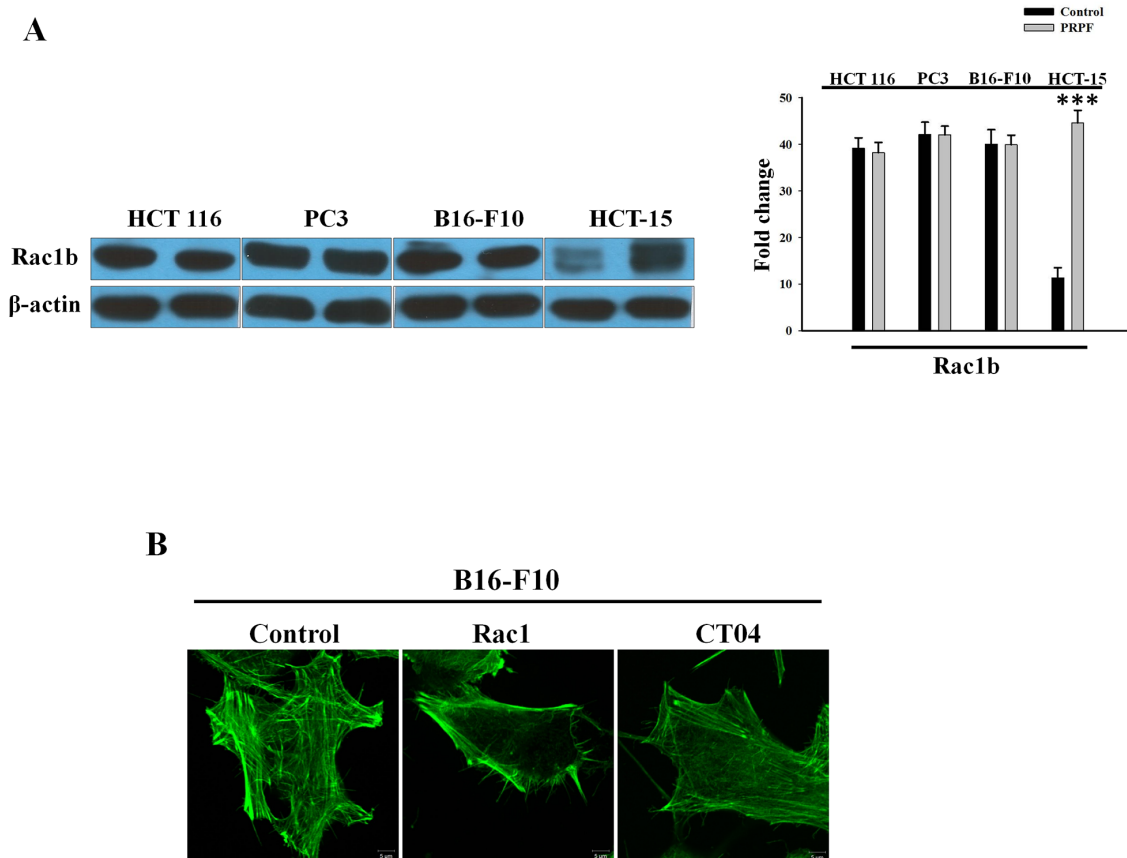


PRPF overexpression induces drug resistance through actin cytoskeleton rearrangement and epithelial-mesenchymal transition

SUPPLEMENTARY MATERIAL



Supplementary Figure 1: The activity of PRPF is mediated by Rho family proteins. (A) Rac1B levels in total cell lysates from four cancer cell lines, analyzed by western blotting. Data represent the means±SD. ***P < 0.01. (B) Cytoskeletal dynamics in B16-F10 cells following Rac1 overexpression and RhoA inhibition. Cells are stained for F-actin, and analyzed by confocal microscopy at a magnification of 1000X.