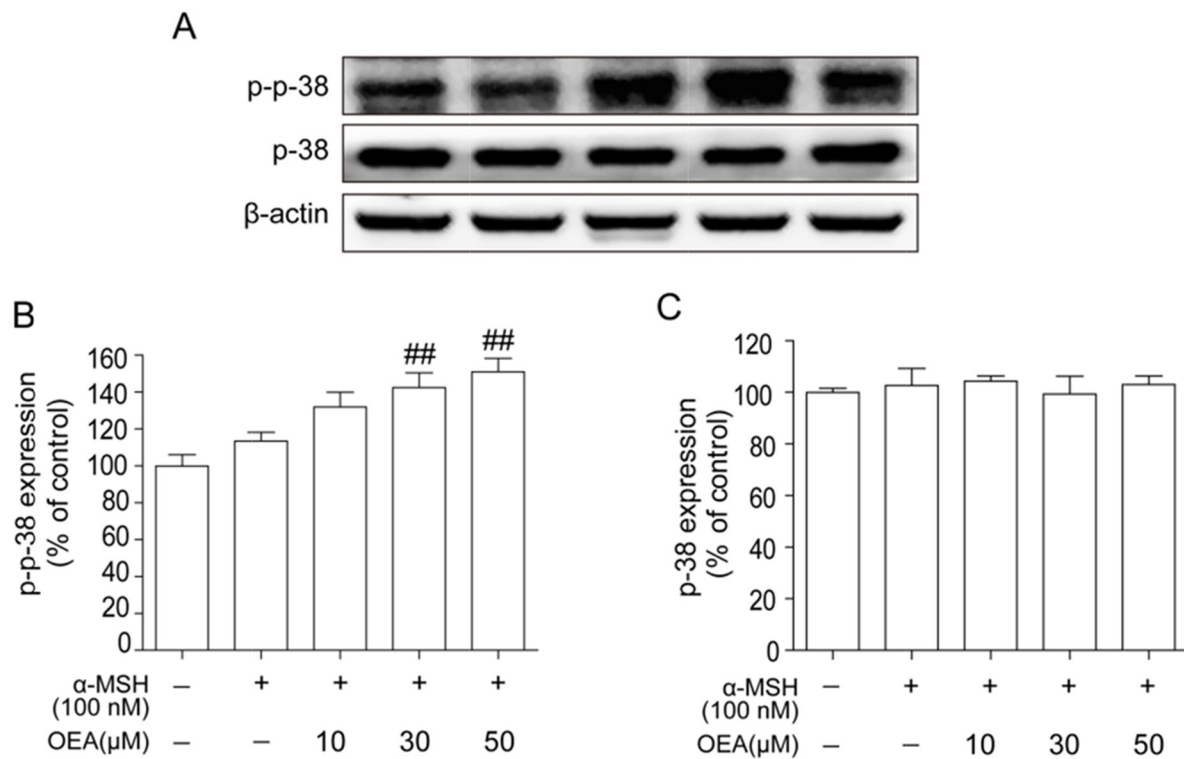
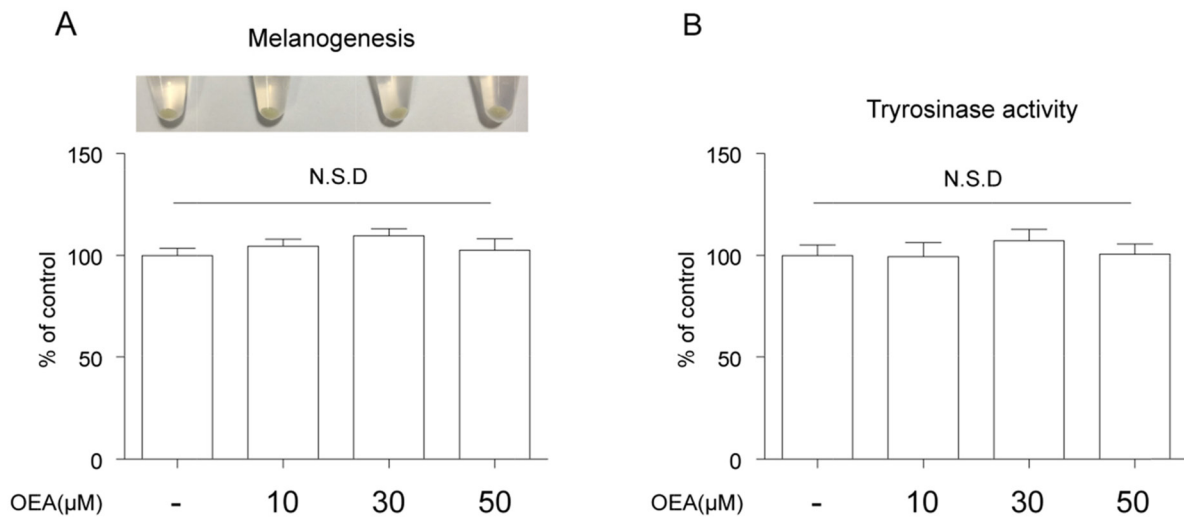


Oleylethanolamide inhibits α -melanocyte stimulating hormone-stimulated melanogenesis via ERK, Akt and CREB signaling pathways in B16 melanoma cells

Supplementary Figures



Supplementary Figure 1: Effects of OEA on the activation of the p38 MAPK pathway in α -MSH-stimulated B16 melanoma cells. Cells were exposed to 100 nM α -MSH in the presence of 10, 30, 50 μ M OEA. (A) p38 and p-p38 protein levels were examined by Western blot. (B) The data are presented as percentages compared with the control group (set to 100%) and represented as the means \pm SEM of three separate experiments performed in duplicate (n=3). ^{##}P<0.01 vs. control group.



Supplementary Figure 2: Effect of OEA on cellular melanin synthesis and tyrosinase activity in B16 cells. Cells were treated with various concentrations of OEA for 72 h. Relative cellular melanin content (A) and tyrosinase activity (B) were measured at 72 h after treatment. The percentage values of the treated cells are expressed relative to that in control cells. Data are reported as the mean \pm SEM of three independent experiments performed in triplicate (n=3). N.S.D: no significant difference.