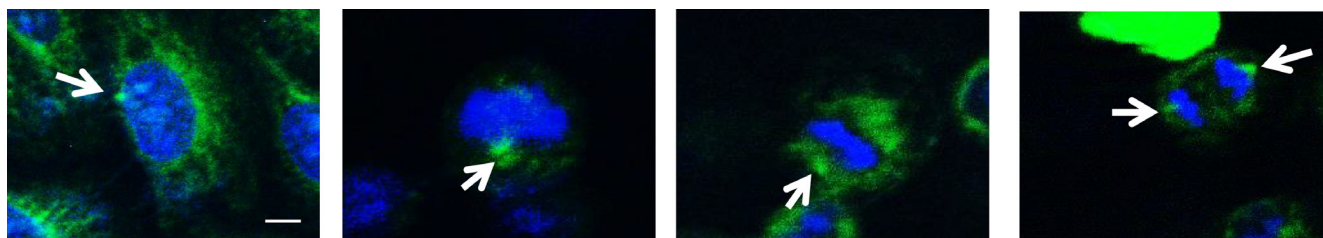


ARD1-mediated aurora kinase A acetylation promotes cell proliferation and migration

SUPPLEMENTARY MATERIALS



Supplementary Figure 1: Centrosome-like localization of ARD1. Overexpressing GFP-ARD1 cells were synchronized, fixed and then mounted. Cells were then visualized by confocal microscope. DNA was counter-stained by Hoechst. Scale bar, 5 μ m. Subcellular localization of ARD1 is indicated by arrows.