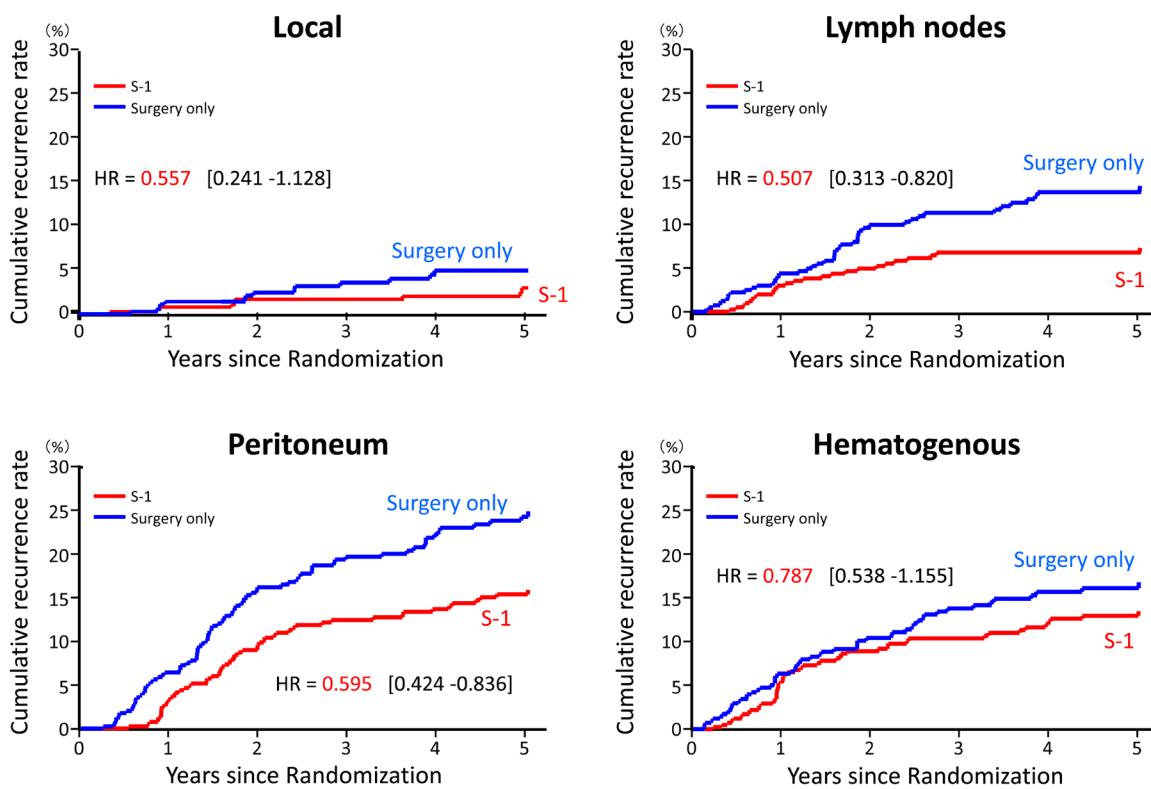


# TOP2A, GGH, and PECAM1 are associated with hematogenous, lymph node, and peritoneal recurrence in stage II/III gastric cancer patients enrolled in the ACTS-GC study

## Supplementary Materials

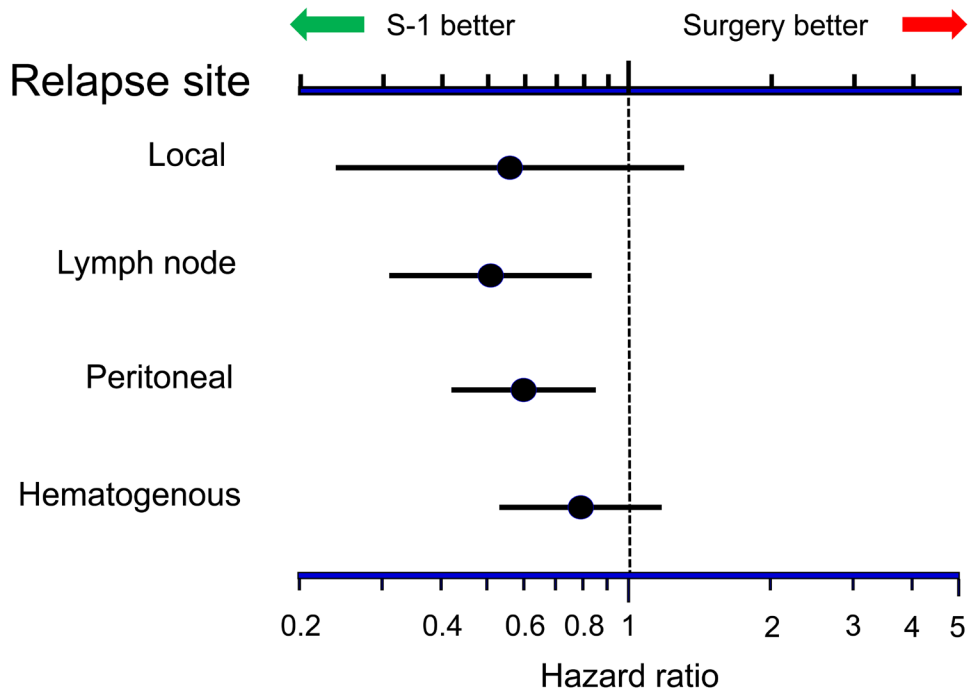
### Site of Relapse: 5-year Cumulative Recurrence Rate (ACTS-GC BM)

(All randomized)



**Figure S1.** Site of relapse: 5-year cumulative recurrence rate.

## Hazard ratios and 95% CIs for each site of first recurrence



**Figure S2.** Hazard ratios (HR) and 95% confidence intervals (CIs) for each site of first recurrence.

**Table S1:** Clinicopathological characteristics of the

## Clinicopathologic characteristics of the patients

	S-1 (N=415)	Surgery Only (N=414)	P Value
<b>Sex - no. (%)</b>			0.900
Male	282 (68)	283 (68)	
Female	133 (32)	131 (32)	
<b>Age</b>			0.715
<60 yr - no. (%)	160 (39)	158 (38)	
60-69 yr - no. (%)	149 (36)	161 (39)	
70-80 yr - no. (%)	106 (26)	95 (23)	
Median yr	63	62	
Range - yr	27 - 80	33 - 80	
<b>Tumor stage - no. (%)</b>			0.925
T1	1 (0)	0 (0)	
T2	222 (53)	223 (54)	
T3	180 (43)	182 (44)	
T4	12 (3)	9 (2)	
<b>Nodal stage - no. (%)</b>			0.523
N0	40 (10)	52 (13)	
N1	233 (56)	222 (54)	
N2	142 (34)	140 (34)	
N3	0 (0)	0 (0)	

	S-1 (N=415)	Surgery Only (N=414)	P Value
<b>Lymph-node metastases - no. (%)</b>			0.175
0	40 (10)	52 (13)	
1-6	254 (61)	254 (61)	
7-15	97 (23)	85 (21)	
>16	24 (6)	23 (6)	
<b>Cancer stage - no. (%)</b>			0.480
II	183 (44)	189 (46)	
IIIa	159 (38)	162 (39)	
IIIb	73 (18)	63 (15)	
IV	0 (0)	0 (0)	
<b>Histologic type - no. (%)</b>			0.977
Differentiated	166 (40)	166 (40)	
Undifferentiated	249 (60)	248 (60)	

Cancer stage was categorized according to Japanese classification

**Table S2.** Univariate analysis of risk for local recurrence

Local recurrence				
Gene	H.R.	95% CI	Log-Rank P	FDR
<i>E2F1</i>	3.021	1.098 - 8.313	0.024	0.814
<i>ITGB3</i>	0.435	0.179 - 1.057	0.058	0.814
<i>EREG</i>	0.408	0.144 - 1.157	0.081	0.814
<i>AREG</i>	0.482	0.204 - 1.136	0.088	0.814
<i>GZMA</i>	0.464	0.187 - 1.151	0.090	0.814
<i>ESR1</i>	0.469	0.189 - 1.162	0.094	0.814
<i>PTGS2</i>	0.501	0.212 - 1.181	0.107	0.814
<i>HDAC1</i>	0.545	0.231 - 1.286	0.159	0.814
<i>DPYD</i>	0.547	0.232 - 1.290	0.162	0.814
<i>MGMT</i>	0.565	0.237 - 1.348	0.192	0.814
<i>ABCB1</i>	0.566	0.238 - 1.350	0.194	0.814
<i>TYMP</i>	0.596	0.258 - 1.377	0.220	0.814
<i>PTEN</i>	0.602	0.260 - 1.390	0.229	0.814
<i>RUNX3</i>	0.611	0.265 - 1.413	0.245	0.814
<i>SPARC</i>	1.634	0.707 - 3.775	0.246	0.814
<i>BAX</i>	0.646	0.280 - 1.493	0.303	0.814
<i>FAS</i>	0.648	0.277 - 1.517	0.314	0.814
<i>BCL2L11</i>	0.598	0.217 - 1.646	0.314	0.814
<i>VEGFA</i>	0.660	0.285 - 1.524	0.327	0.814
<i>ERBB2</i>	1.494	0.655 - 3.408	0.337	0.814
<i>BCL2</i>	0.653	0.267 - 1.597	0.346	0.814
<i>UMPS</i>	0.675	0.288 - 1.578	0.361	0.814
<i>EGFR</i>	0.686	0.297 - 1.586	0.375	0.814
<i>LRP5</i>	0.701	0.304 - 1.621	0.404	0.814
<i>UPP1</i>	0.717	0.314 - 1.635	0.427	0.814
<i>TOP1</i>	0.732	0.321 - 1.670	0.457	0.814
<i>REG4</i>	0.723	0.305 - 1.716	0.460	0.814
<i>IGF1R</i>	0.731	0.316 - 1.688	0.461	0.814
<i>ABCC1</i>	1.358	0.596 - 3.098	0.465	0.814
<i>ERCC1</i>	1.354	0.594 - 3.089	0.469	0.814
<i>VCAM1</i>	0.744	0.326 - 1.697	0.481	0.814
<i>DUT</i>	0.756	0.331 - 1.724	0.505	0.814
<i>RRM2</i>	0.765	0.335 - 1.745	0.524	0.814
<i>TYMS</i>	1.285	0.564 - 2.931	0.550	0.814
<i>CAV1</i>	0.785	0.344 - 1.791	0.565	0.814
<i>PLAU</i>	1.270	0.557 - 2.897	0.569	0.814
<i>GADD45A</i>	1.323	0.493 - 3.554	0.577	0.814
<i>MLH1</i>	0.789	0.341 - 1.826	0.579	0.814
<i>PECAM1</i>	0.794	0.348 - 1.812	0.584	0.814
<i>EZH2</i>	1.255	0.529 - 2.981	0.605	0.814
<i>MTHFR</i>	0.804	0.347 - 1.860	0.608	0.814
<i>THBS1</i>	0.814	0.357 - 1.857	0.625	0.814
<i>TOP2A</i>	0.814	0.357 - 1.858	0.625	0.814
<i>MUC2</i>	1.173	0.463 - 2.972	0.736	0.886
<i>GGH</i>	1.149	0.507 - 2.604	0.739	0.886
<i>LDHA</i>	0.886	0.391 - 2.008	0.772	0.886
<i>FPGS</i>	1.126	0.497 - 2.552	0.776	0.886
<i>DHFR</i>	0.892	0.394 - 2.021	0.784	0.886
<i>TGFA</i>	0.891	0.385 - 2.063	0.787	0.886
<i>MAPT</i>	0.893	0.386 - 2.068	0.792	0.886
<i>APC</i>	0.911	0.402 - 2.065	0.823	0.886
<i>HPSE</i>	1.071	0.473 - 2.428	0.869	0.886
<i>PLA2G2A</i>	1.081	0.417 - 2.801	0.873	0.886
<i>ANGPT2</i>	1.071	0.464 - 2.470	0.873	0.886
<i>RRM1</i>	0.942	0.415 - 2.134	0.885	0.886
<i>DAPK1</i>	0.939	0.399 - 2.211	0.886	0.886

**Table S3.** Multivariate analysis of peritoneal recurrence

**Peritoneum recurrence**

Group	Status	N	Hazard Ratio (95% CI)	P-value
Arm	Surgery Only	413	1	0.0006
	S-1	415	0.553 [0.392 - 0.776 ]	
SEX	Female	264	1	0.3385
	Male	564	0.843 [0.598 - 1.198 ]	
Stage	II	371	1	0.0000002
	IIIa	321	1.822 [1.46 - 2.274 ]	
	IIIb	136	3.319 [2.131 - 5.169 ]	
Histology	Diffrentiated	493	1	0.0038
	Undifferentiated	332	1.806 [1.204 - 2.789 ]	
PECAM1	Low	412	1	0.0002
	High	413	1.962 [1.367 - 2.864 ]	

**Table S4.** Multivariate analysis of lymph-node recurrence

**Lymph-node recurrence**

Group	Status	N	Hazard Ratio (95% CI)	P-value
Arm	Surgery Only	384	1	0.0020
	S-1	391	0.462 [0.274 - 0.757 ]	
SEX	Female	240	1	0.9342
	Male	535	1.024 [0.598 - 1.828 ]	
Stage	II	353	1	0.0002
	IIIa	296	1.868 [1.351 - 2.578 ]	
	IIIb	126	3.488 [1.824 - 6.644 ]	
Histology	Diffrentiated	460	1	0.0825
	Undifferentiated	312	0.641 [0.386 - 1.059 ]	
GGH	Low	386	1	0.0226
	High	386	1.803 [1.085 - 3.063 ]	

**Table S5.** Multivariate analysis of hematogenous recurrence

**Hematogenous recurrence**

Group	Status	N	Hazard Ratio (95% CI)	P-value
Arm	Surgery Only	413	1	0.181044
	S-1	412	0.766 [0.517 - 1.132 ]	
SEX	Female	261	1	0.798046
	Male	564	1.061 [0.683 - 1.694 ]	
Stage	II	371	1	0.000003
	IIIa	319	1.868 [1.44 - 2.421 ]	
	IIIb	135	3.489 [2.073 - 5.863 ]	
Histology	Diffrentiated	490	1	0.261429
	Undifferentiated	332	0.789 [0.521 - 1.193 ]	
TOP2A	Low	411	1	0.000213
	High	411	2.245 [1.455 - 3.541 ]	

**Table S6.** Correlation matrix Table (Pearson's correlation coefficient)

**Table S7.** Subgroup analyses according to the disease stage

**Table S8.** Subgroup analyses according to the intervension

**Table S9.** The interaction for site-specific recurrence between the gene expression and treatment arm.

**Table S10.** Assay IDs used in the Low-density array hyperlinked to DAVID website

**For Supplementary Tables S6-S10 see Supplementary Files: Supplementary Tables S6-S10**