

Suppl. figure e-2

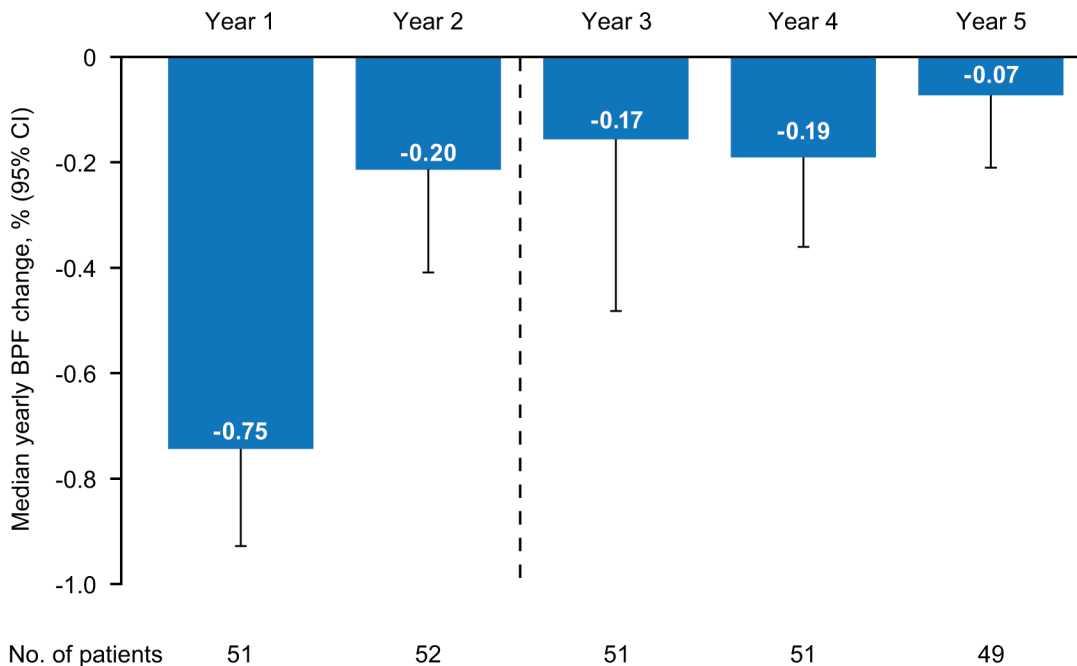


Figure e-2 Brain volume loss over 5 years in patients with sustained NEDA over Years 2–5
Median percentage yearly change in BPF. Results are shown for patients who received the initial 2 alemtuzumab courses in the core CARE-MS II study, achieved NEDA at Year 2 of the core study, and maintained NEDA through the extension study without alemtuzumab retreatment or treatment with another disease-modifying therapy. BPF = brain parenchymal fraction; NEDA = no evidence of disease activity.