

Supplementary Table 1. List of primers used

Gene	Primer Forward	Primer Reverse
hCD44	AGAAGGTGTGGGCAGAAGAA	AAATGCACCATTTCTGAGA
hHAS1	GAGCCTCTTCGCGTACCTG	CCTCCTGGTAGGCGGAGAT
hHAS2	TCCTGGATCTCATTCCCTCAGC	TGCACTGAACACACCCAAAATA
hHAS3	CGCAGCAACTTCCATGAGG	AGTCGCACACCTGGATGTAGT
hHPRT1	TGACCTTGATTTATTTTGCATA CC	CGAGCAAGACGTTTCAGTCCT
hHYAL2	CACGGGGCTTAGTGAGATG	GTCACCCCAGAGGATGACAC
musHyal1	CCTCAACCCTGCCAGTTTCTC	CCCGCTTGTCACACCACTT
musHyal2	GCAGGACTAGGTCCCATCATC	TTCCATGCTACCACAAAGGGT
musHyal3	TCTGTGGTATGGAATGTACCCT	TTTTGGCCGTGAAAATGTTGG
hNRF2	ACACGGTCCACAGCTCATC	GCCTCCAAAGTATGTCAATCAA
hSDHA	GAGGCAGGGTTTAATACAGCA	CCAGTTGTCCTCCTCCATGT

Mouse RT-PCR was performed using custom Prime PCR plates with primers designed and validated by BioRad (Hercules, CA).

Supplementary Table 2. List of BioRad primers used

Gene	Unique Assay ID	Amplicon Context sequence
Actb	qMmuCED002 7505	TGCTCGAAGTCTAGAGCAACATAGCACAGCTTCTCTTTG ATGTCACGCACGATTTCCCTCTCAGCTGTGGTGGTGAAG CTGTAGCCACGCTCGGTTCAGGATCTTCATGAGGTAGTCT GTCAGGTCCCGGCCAGCCAGGT
Cd44	qMmuCEP0062 158	AGTTAATGGCGTAGGCACTACACCCCAATCTTCATGTCC ACACTCTGCAGATTCCGGGTCTCGTCAGCTGTCATACAC TGGTCCGGGGTCTCTGATGGTTCCTTGTTACCAAATG

Col1a1	qMmuCID0021 007	CCTCTTAGGGGCCACTGCCCTCCTGACGCATGGCCAAG AAGACATCCCTGAAGTCAGCTGCATACACAATGGCCTA AGGGTCCCCAATGGTGAGACGTGGAAACCCGAGGTATG CTTGATCTGTATCTGCCACA
Col1a2	qMmuCID0021 177	GGCAACAGCAGGTTACCTACTCTGTCCTAGTCGATGG CTGCTCCAAAAGACAAATGAATGGGGCAAGACAATCA TTGAATACAAAACAAATAAGCCATCTCGCCTGCCGTT CTTGACATTGCACCTCTGGACATTGGTGGTGCTGAC
Col3a1	qMmuCID0006 332	ATTTAGACATGATGAGCTTTGTGCAAAGTGGAACCTGG TTTCTTCTCACCCTTCTTCATCCCCTCTTATTTTGGCAC AGCAGTCCAACGTAGATGAATTGGGATGCAGCCACCTT GGTCAGTCCTATGAGTCTAGAGATGTCTGGAAGCCAGA ACCATGTCAAATATGTGTCTGTGACTCAGGATCT
Has1	qMmuCIP0036 412	TCTCCGAGTAGCATCTGGAGCGCGAGGTATACTTGGTA GCATAGCCCATGCTAAGCATTCGGTTGGTGAGGTGCCT GTCATCCCCAAATGTGCAGTGGGTGCCCAGGAACCTTT GGTTGTACCAGGCCTCCAAGAACTGCTGCAG
Has2	qMmuCID0011 459	ACATCTCCTCCAACACCTCCAACCATAGGGTCTTCCTCT AAGACCTTCACCATCTCCACAGATGAGGCAGGGTCAAG CATAGTATCTGAGTCACACACCTGTACATAATCCACGCT TCGCCCCAGTGCTCTGAAGGCTGTG
Has3	qMmuCID0014 012	TCAAGGCCCTTGGCAACTCAGTGGACTACATCCAGGTG TGTGACTCTGACACTGTGCTGGACCCAGCCTGCACCATT GAGATGCTTCGAGTCTTGGAAGAAGATCCCCAAGTA
Hyal1	qMmuCEP0042 433	GCCTGCAGCACTGATGGGCACAGAGAAGTCACAGATGT ACGTTTCGACACCGTGTGCAAGAGGCGCTCCGTGTGGCT ATAGTTTCCAGAGACCCCATGTGCCCGTAAT GCCCTACGTCCAGATCTTCTATGAAA
Hyal2	qMmuCEP0052 809	TTTGAGTTCGCCGCTCGGCAGTTCATGTTGAACACTCTC CGTTACGTCAAGGCAGTCAGACCCAGCACCTGTGGGG CTTCTACCTCTTTCCTGACTGCTACAATCACGATTATGT ACAGAACTG
Hyal3	qMmuCEP0052 809	TTTGAGTTCGCCGCTCGGCAGTTCATGTTGAACACTCTC CGTTACGTCAAGGCA GTCAGACCCAGCACCTGTGGGGCTTCTACCTCTTTCCT GACTGCTACAATCAC GATTATGTACAGAACTG
Fn1	qMmuCID0019 534	TTGTAGGTGACCCCTCTGGTAAGGCCAGTCAGAGTCGA CTGGTAGAAGTTCCAGGAACCTTGGAACTGTAAGGGCTC

		TTCGTCGGTGCCAACTGGTTGGCATGAAATGATGTACTC AGAACTCTCCTGGAACGG
Nrf2	qMmuCIP0033 901	ACTTACTCCAAGATCTATGTCTTGCCTCCAAAGGATGTC AATCAAATCCATGTCCTGCTGGGACTGTAGTCCTGGCG GTGGCAACTCCAAGTCCATCATGCTGAGGGCGGACGCT GTGGTAGGGC
Tbp	qMmuCID0040 542	TCTGAGTACTGAAGAAAGGGAGAATCATGGACCAGAAC AACAGCCTTCCACCTTATGCTCAGGGCTTGGCCTCCCA CAGGGCGCCATGACTCCTGGAATTCCCATCTTTAGTCCA ATGATGCCTTACGGCA

Supplementary Table 3. List of primary antibodies used.

αSMA	A5228 Sigma Aldrich (St Louis, MO) (IHC 1:1000)
CD44	10R-2062 Fitzgerald (Acton, MA) (IB: 1:1000)
Hyaluronan	#385911 CalBioChem (San Diego, Ca) (1:125 IHC)
Has1	PA550674 Thermo Fisher (Waltham, MA) (IB: 1:500) (IHC 1:100)
Has2	abx10958 Abbexa (Cambridge, UK) (IHC 1:200)
Has3	sc-365322 Santa Cruz (Santa Cruz, CA) (IHC 1:200)
Hyal1	sc-101340 Santa Cruz

	(IB: 1:200)
Hyal2	sc-99022 Santa Cruz (IB 1:200)
Hyal3	PA1856 Boster Bio (Pleasanton, CA) (IB 1:100)
HABP2	PA5-25573, Thermo Fisher Scientific, (Waltham MA) (IHC 1:100)
GEFT	GTX121237 GeneTex (Irvine, CA) (IB 1:1000) human or sc-16137 Santa Cruz (IB 1:200) mouse
GAPDH	AM4300 Thermo Fisher Scientific (IB 1:1000)
β-Actin	A5316 Sigma Aldrich (IB 1:1000)

Figure S1

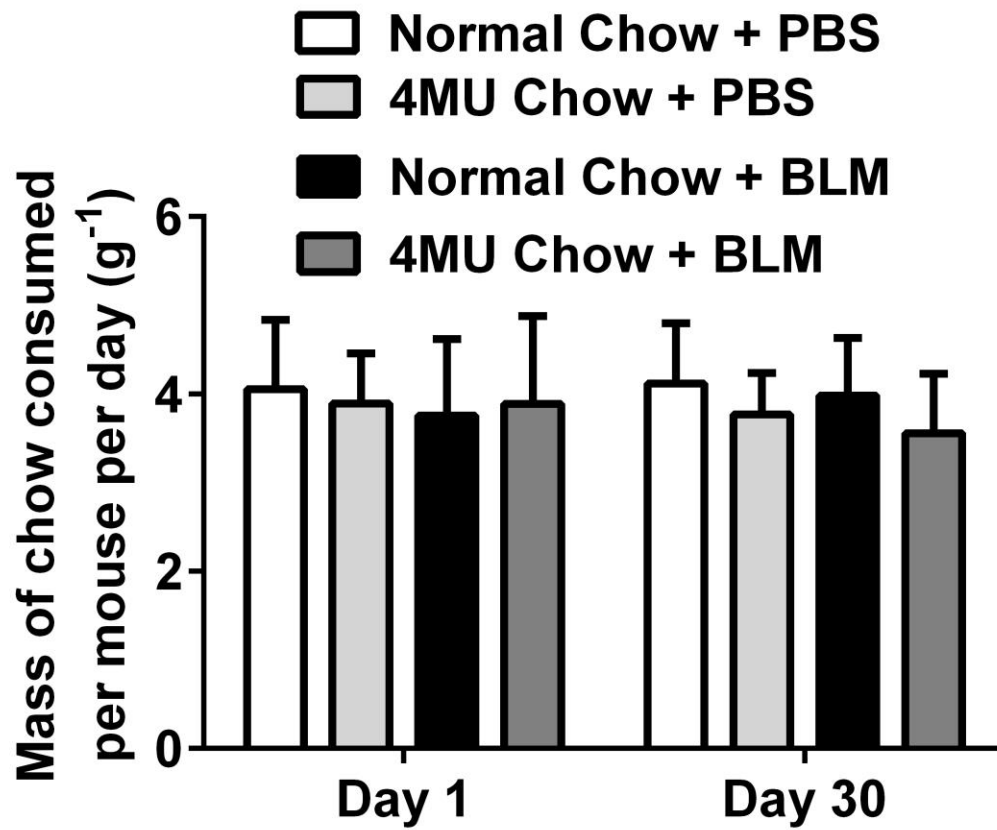


Figure S2

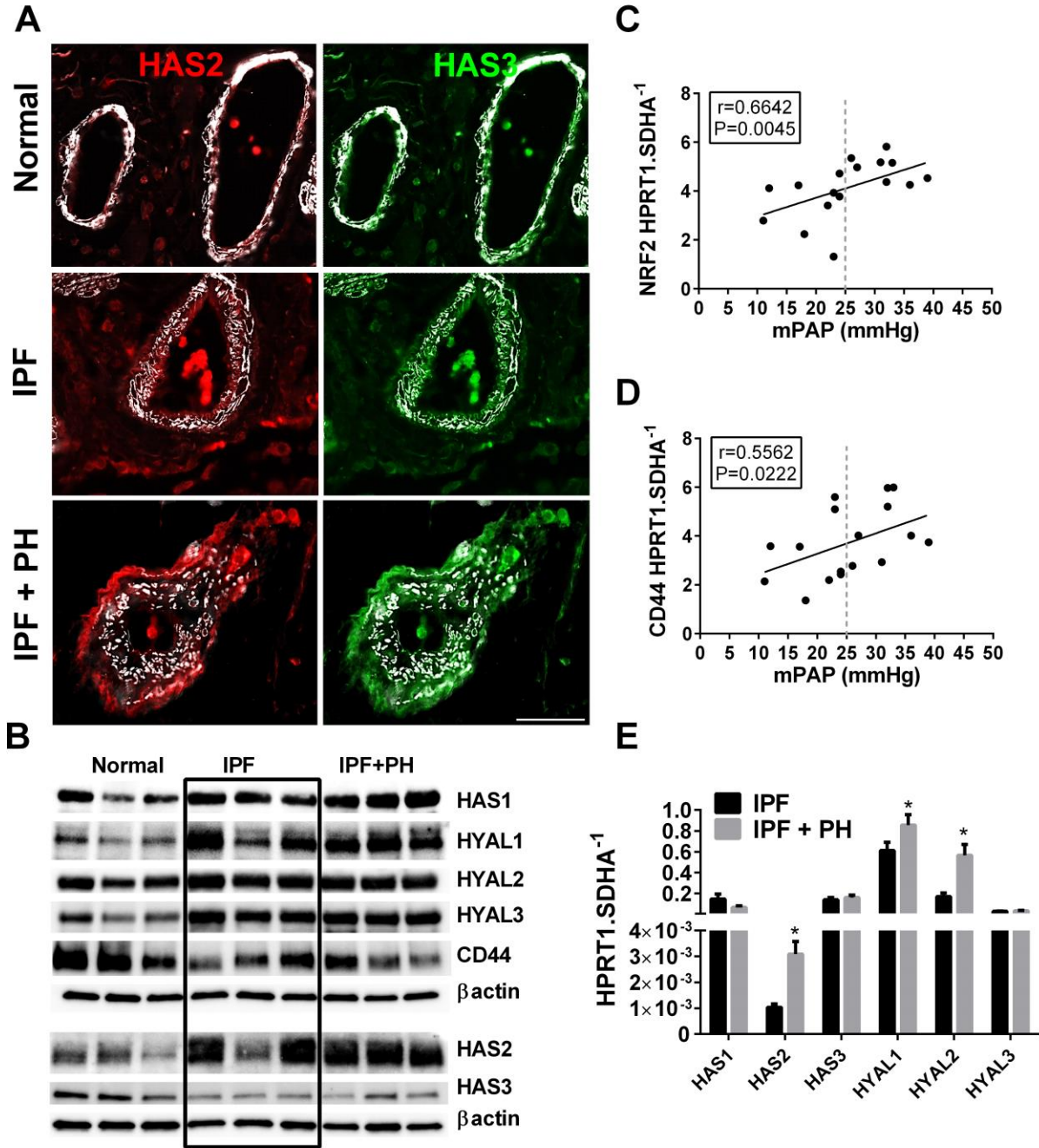
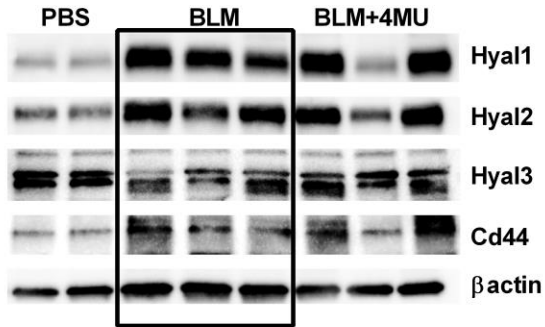
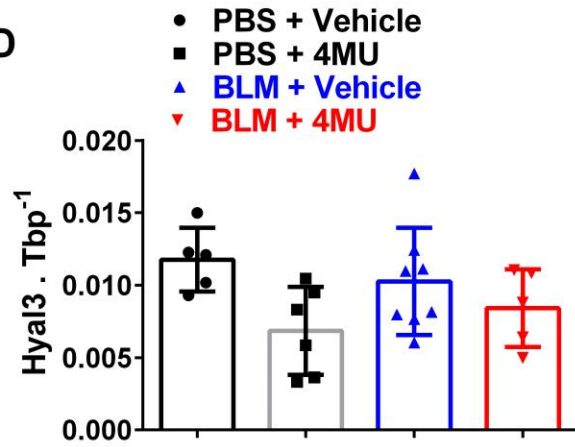


Figure S3

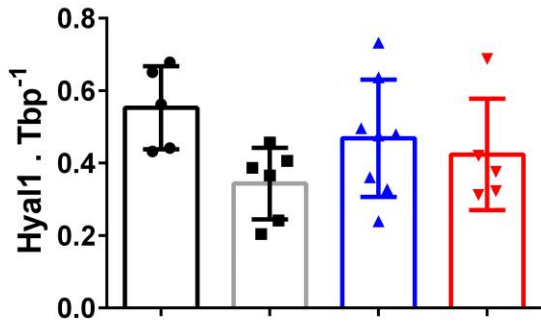
A



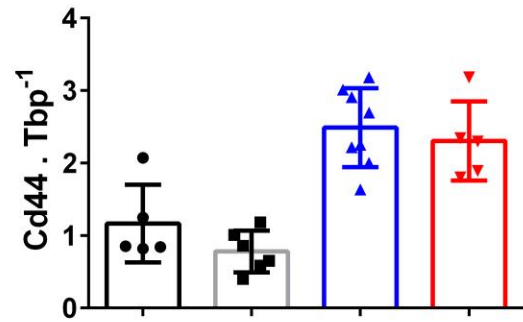
D



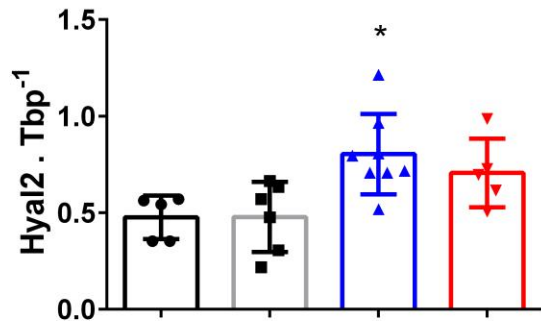
B



E



C



F

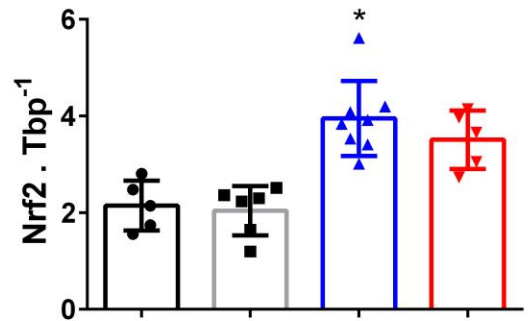


Figure S4

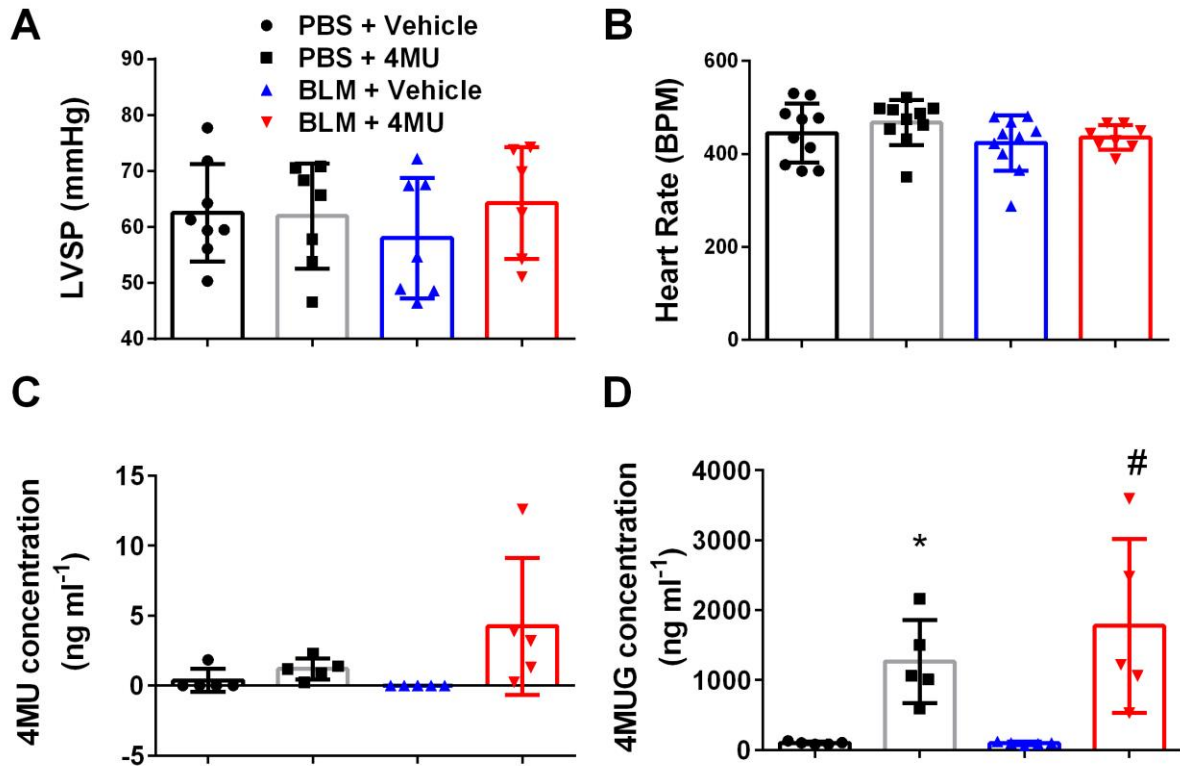


Figure S5

