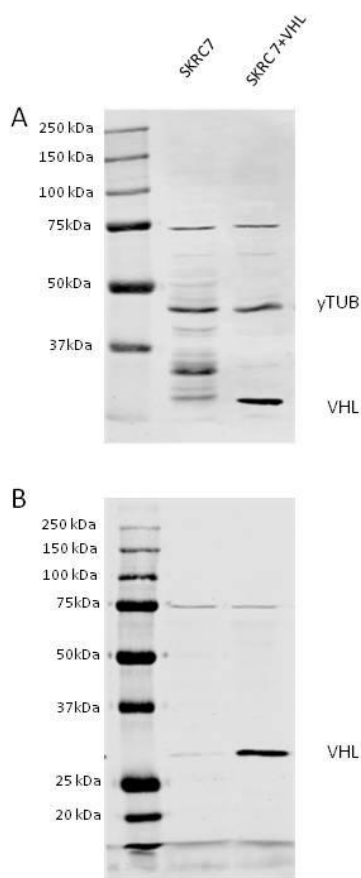


Supplementary file

Profiling of the metabolic transcriptome via single molecule molecular inversion probes

Tessa de Bitter¹, Carlijn van de Water¹, Corina van den Heuvel¹, Carolien Zeelen¹ Astrid Eijkelenboom¹, Bastiaan Tops¹, Egbert Oosterwijk², Dimitar Kolev², Peter Mulders², Mark ter Laan³, Sanne van Lith¹, William Leenders^{1*}



A: western blot containing samples from SKRC7 and SKRC7-VHL-HA cell lines, probed with an antibody against γ -tubulin (probed with a 680 nm fluorescent secondary antibody) and an antibody against HA (probed with an 800 nm fluorescent secondary antibody), to detect tagged VHL. The blot was stained in dual color for imaging in the Odyssey (Licor). To prevent confusion about the background signals between 30 and 37 kDa, we repeated the blot with the same samples, but stained for VHL only (panel B).