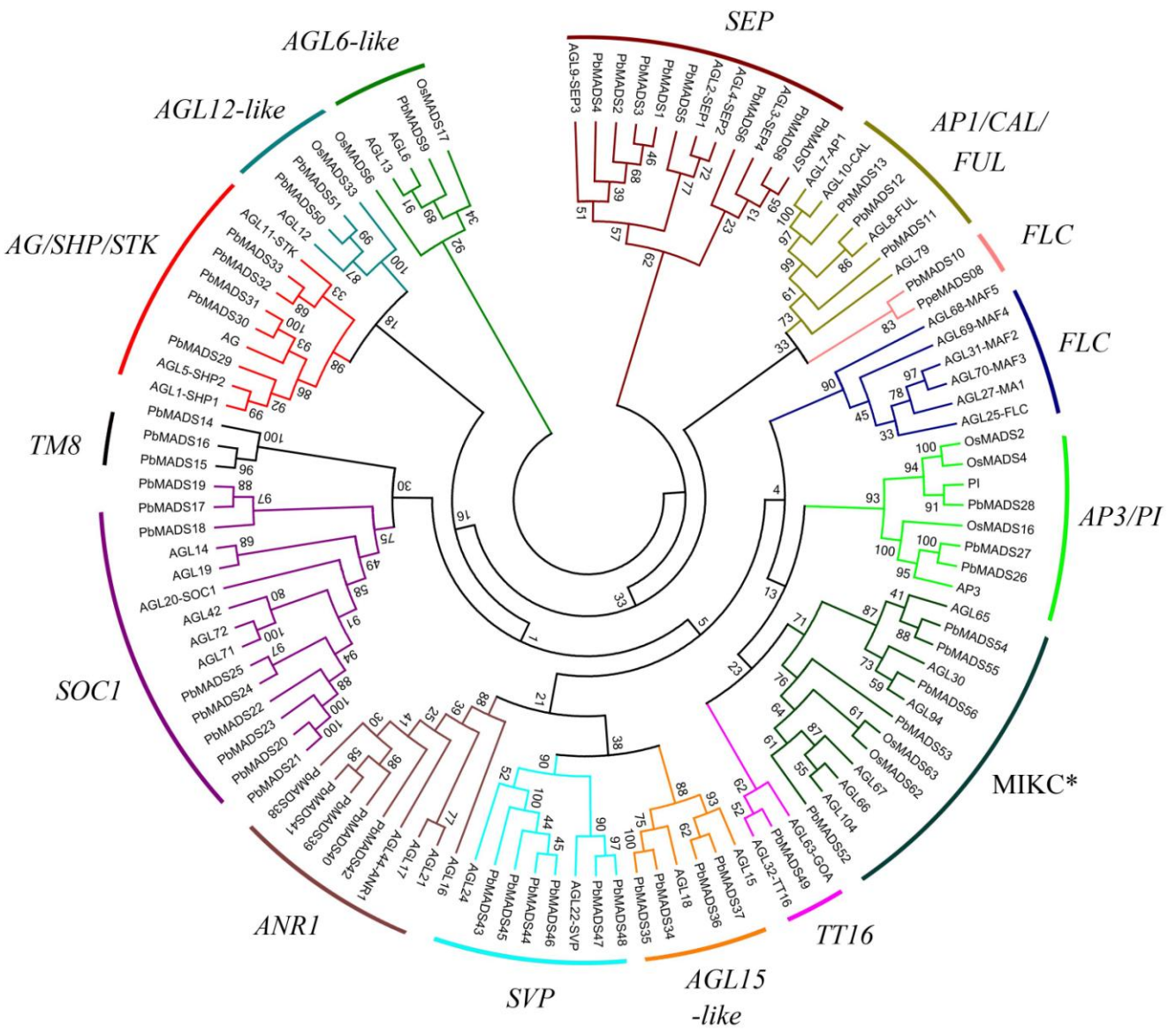
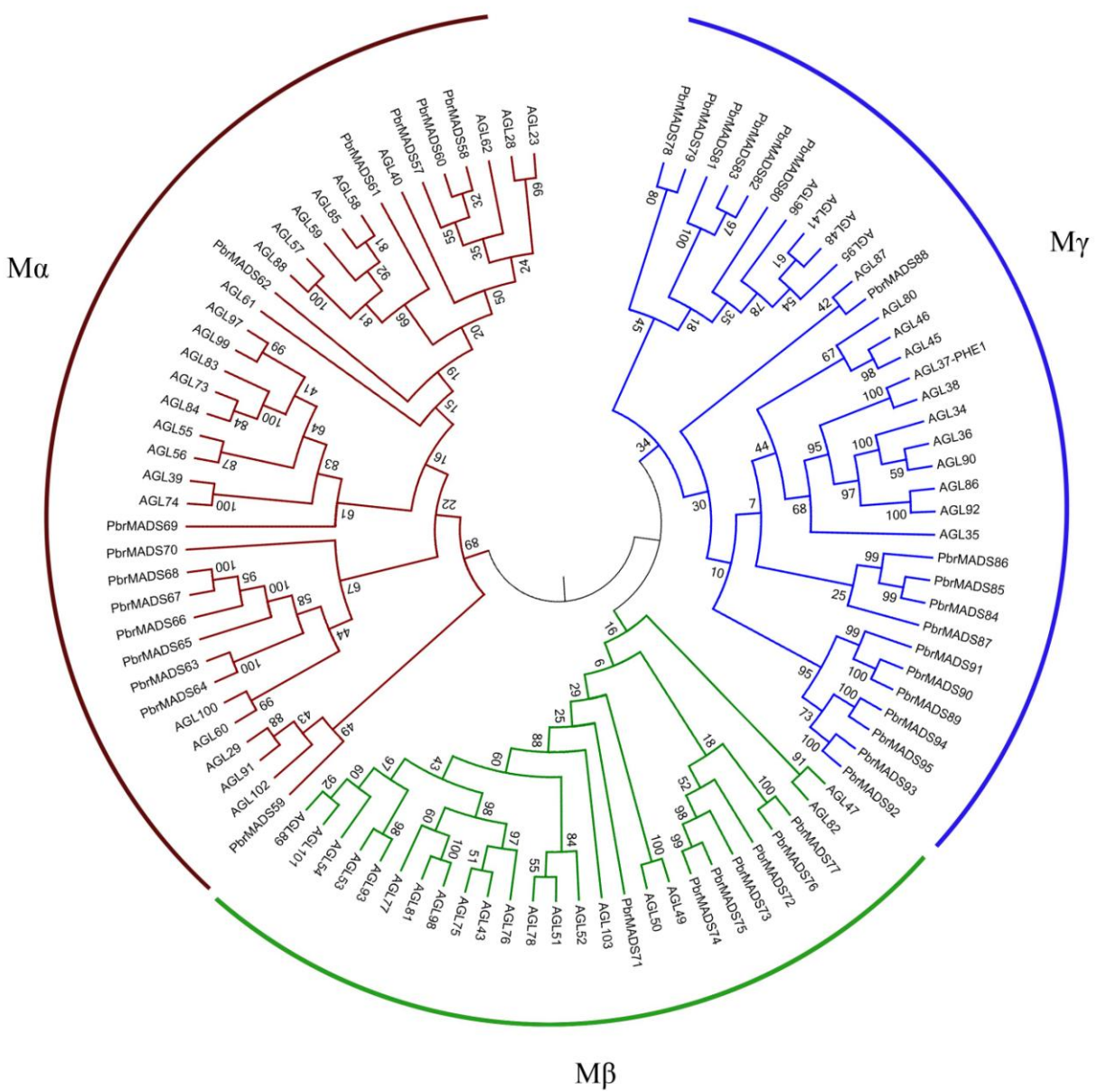


(a)



(b)



Supplementary figure 2. Maximum likelihood trees of type I and II *MADS-box* transcription factors in pear. (a) Tree of type II genes: a total of 56 type II *MADS-box* proteins in pear, 46 in *Arabidopsis*, and 8 in rice were used to construct the ML tree. The subgroups are indicated by different branch colors. (b) Tree of type I genes: a total of 39 type I *MADS-box* proteins in pear and 61 in *Arabidopsis* were used to construct the ML tree. The subgroups are indicated by different branch colors.