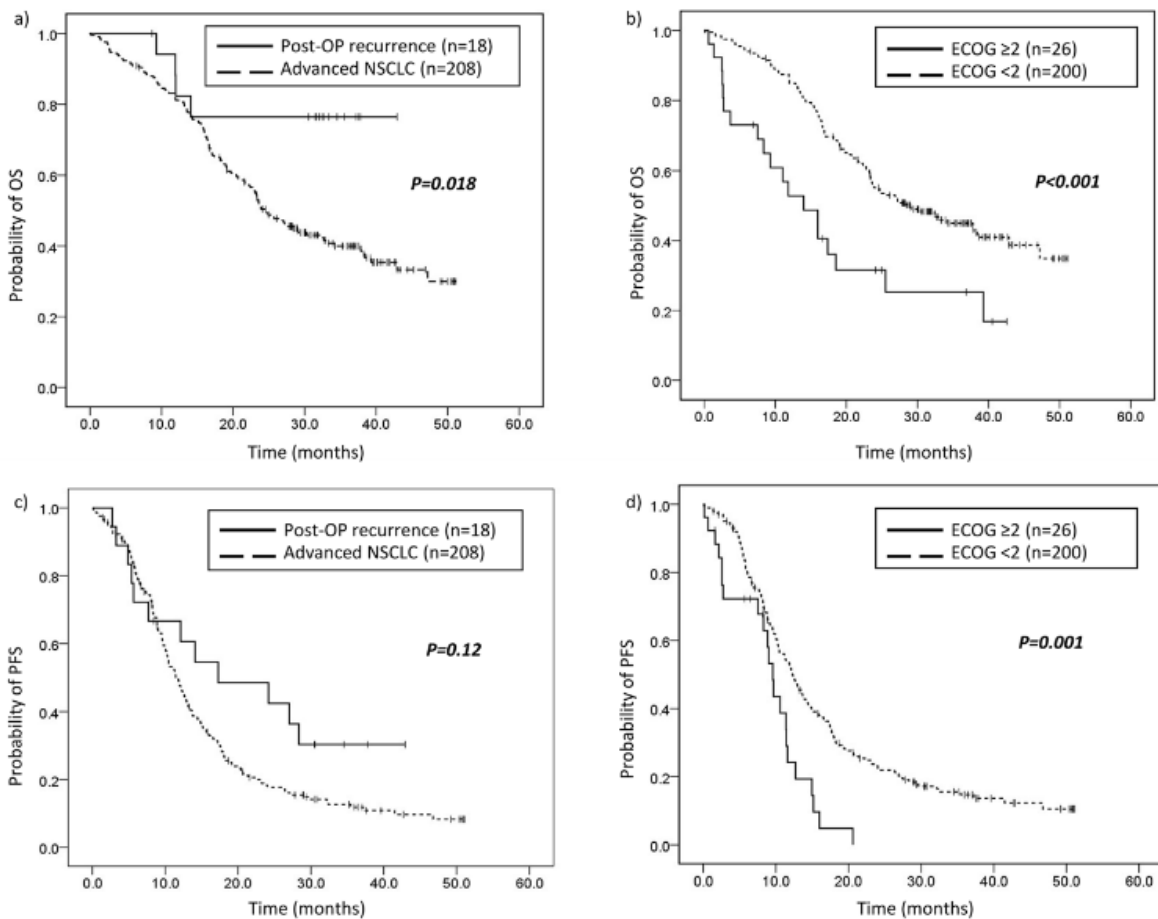


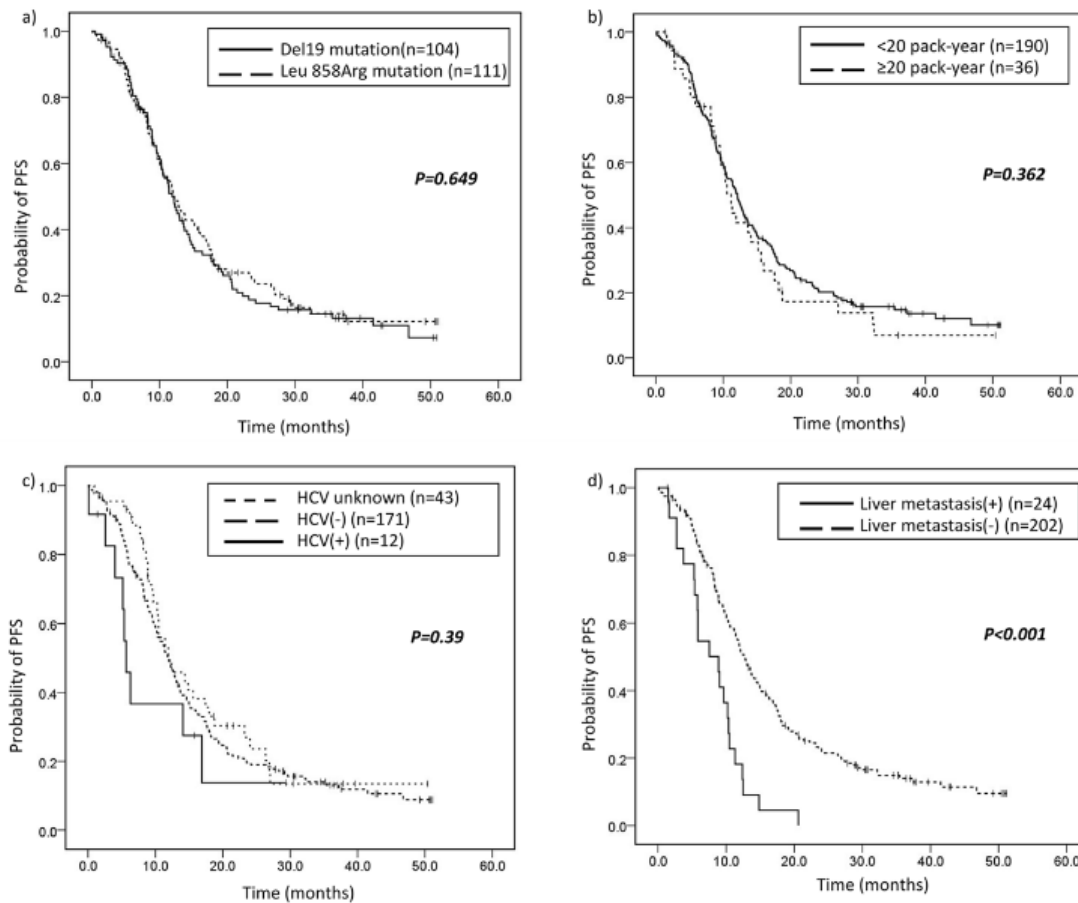
Supplemental Figures for:
Real World Data on Prognostic Factors for Overall Survival in EGFR mutation-positive Advanced NSCLC Patients Treated with first-line Gefitinib
Wei-Yu Liao et al.

Figure S1. Kaplan–Meier survival curves of overall survival in a) patients with post-operative recurrence and newly diagnosed advanced NSCLC ($P=0.018$, Log-rank test), b) in patients with ECOG ≥ 2 and ECOG < 2 ($P<0.001$, Log-rank test); progression free survival in c) patients with post-operative recurrence and newly diagnosed advanced NSCLC ($P=0.12$, Log-rank test), d) in patients with ECOG ≥ 2 and ECOG < 2 ($P=0.001$, Log-rank test)



Supplemental Figures for:
Real World Data on Prognostic Factors for Overall Survival in EGFR mutation-positive Advanced NSCLC Patients Treated with first-line Gefitinib
Wei-Yu Liao et al.

Figure S2. Kaplan–Meier survival curves of progression free survival in a) patients with Exon 19 deletion and L858R mutation ($P=0.649$, Log-rank test), b) in patients with smoking index ≥ 20 pack-year and smoking index < 20 pack-year ($P=0.362$, Log-rank test), c) in patients with chronic hepatitis C, without chronic hepatitis C and unknown HCV status ($P=0.39$, Log-rank test), d) in patients with liver metastasis and without liver metastasis ($P<0.001$, Log-rank test)



Supplemental Figures for:
Real World Data on Prognostic Factors for Overall Survival in EGFR mutation-positive Advanced NSCLC Patients Treated with first-line Gefitinib
Wei-Yu Liao et al.

Figure S3. Kaplan–Meier survival curves of overall survival in patients without hepatotoxicity, with grade I hepatotoxicity and grade II hepatotoxicity

