

**Pollination of *Ficus elastica*: India rubber re-establishes sexual reproduction in Singapore Supplementary Information**

Rhett D. Harrison<sup>1</sup>, Kwek Yan Chong<sup>2</sup>, Nguyet Minh Pham<sup>2</sup>, Alex T.K. Yee<sup>2</sup>, Chow Khoo Yeo<sup>2</sup>, Hugh T.W. Tan<sup>2</sup>, Jean-Yves Rasplus<sup>3</sup>

<sup>1</sup>World Agroforest Centre (ICRAF), East & Southern Africa Regional Office, 13 Elm Road, Woodlands, Lusaka, Zambia

<sup>2</sup>Department of Biological Sciences, National University of Singapore, 14 Science Drive 4, Singapore 117543, Republic of Singapore.

<sup>3</sup>INRA, UMR 1062, 34988 Montferrier-sur-Lez cedex, France

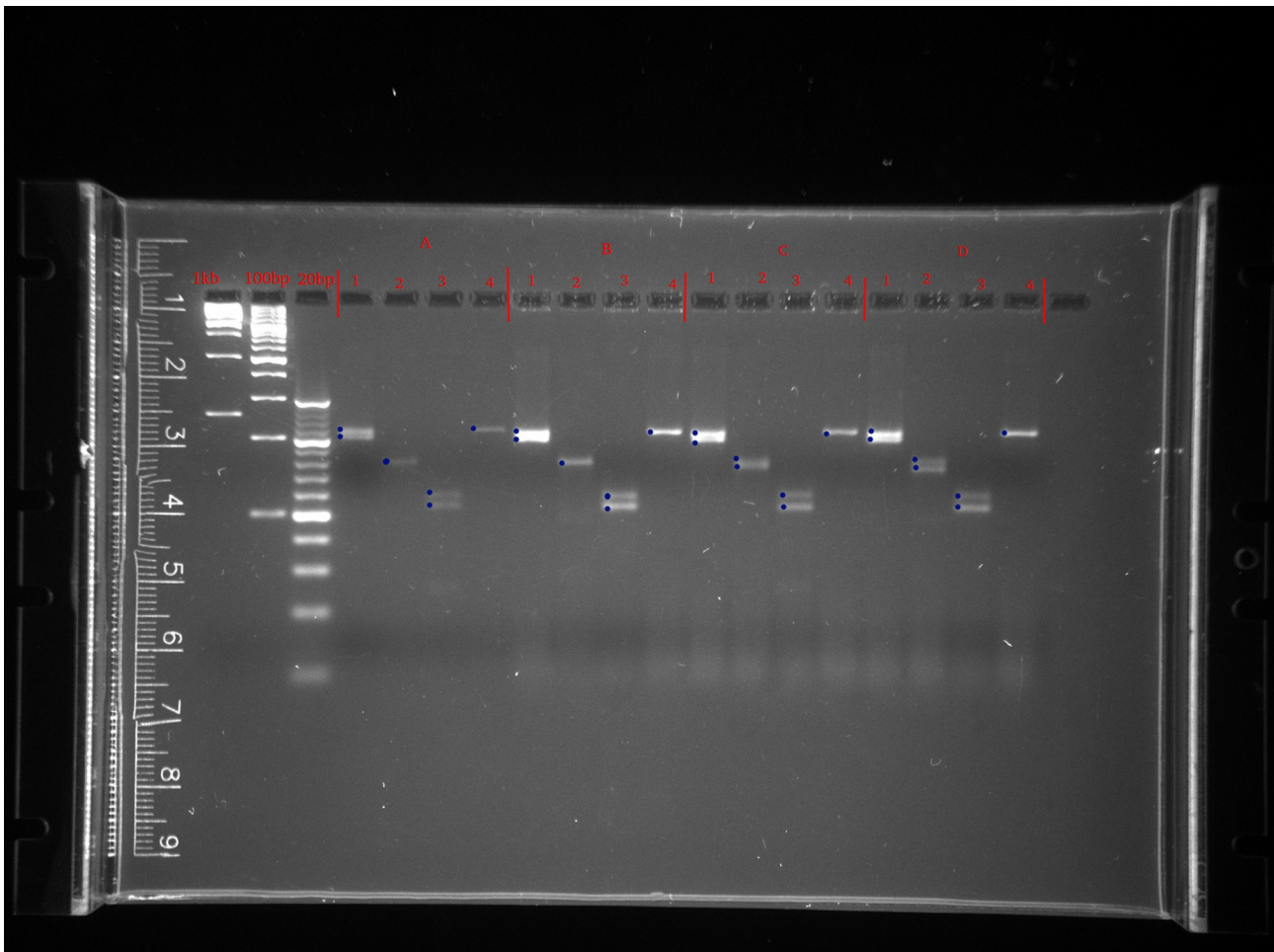


Figure S1 part 1. Results of the microsatellite analyses. A and B are adult trees and C and D were nearby seedlings. All four were found around the Chinese Heritage House on the Nanyang Technological University (NTU) campus. Eight primer pairs were used: MFC1 , MFC2, MFC3, MFC4, MFC5, MFC6, MFC7, MFC8 identified by Khadari et al. (2001). The seedlings are not identical with the adult trees, differing in one of a pair of alleles in MFC2 and MFC5 each and are also not genetically identical (differing in one allele at MFC5).

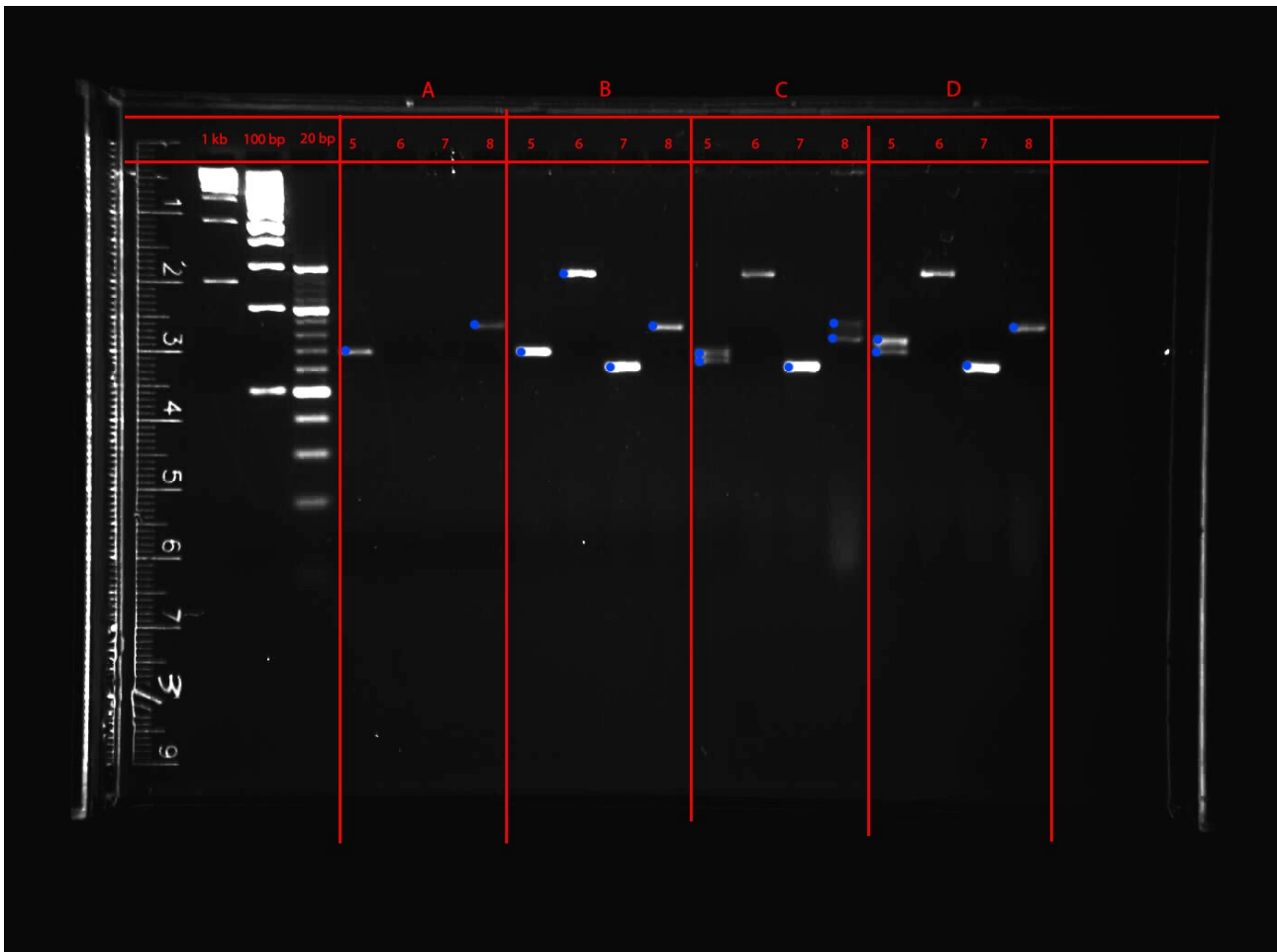


Figure S1 part 2. Results of the microsatellite analyses. A and B are adult trees and C and D were nearby seedlings. All four were found around the Chinese Heritage House on the Nanyang Technological University (NTU) campus. Eight primer pairs were used: MFC1 , MFC2, MFC3, MFC4, MFC5, MFC6, MFC7, MFC8 identified by Khadari et al. (2001). The seedlings are not identical with the adult trees, differing in one of a pair of alleles in MFC2 and MFC5 each and are also not genetically identical (differing in one allele at MFC5).



Figure S2. Images of *Platyscapa clavigera* (Mayr 1885) collected in Singapore and imaged using an EntoVision Premium Portable Imaging System, comprising a Leica M16 zoom lens and a JVC KY-75U 3CCD digital camera.