

**RAW DATA FILES FOR**

**EDWARDSON ET AL.**

**Inflammatory Cytokine Production in Tumor Cells Upon Chemotherapy Drug  
Exposure or Upon Selection for Drug Resistance**

***PONE-D-17-07769***

**FIGURE 1**

**Panel A**

	2.5 nM Docetaxel					
	NT			2.5 nM Docetaxel		
	A:Y1	A:Y2	A:Y3	B:Y1	B:Y2	B:Y3
24h	0.113538	0.145884	0.112556	0.087251	0.128359	0.1081
48h	0.115496	0.166232	0.130045	1.109651	1.248917	1.182244
72h	0.285243	0.229331	0.226879	2.522443	2.076122	2.470708
96h	0.214771	0.24559	0.225553	3.29204	3.337343	2.953104

**Panel B**

	2.5 nM Docetaxel					
	NT			2.5 nM Docetaxel		
	A:Y1	A:Y2	A:Y3	B:Y1	B:Y2	B:Y3
24h	0.213056	0.223397	0.212101	0.243376	0.247883	0.217154
48h	0.417918	0.511684	0.454801	1.75034	1.639714	2.0478
72h	0.852225	0.908543	0.869977	5.074019	5.390326	5.496852
96h	2.110896	1.988949	2.038824	9.660055	10.91504	10.77318

**Panel C**

NT	nM Docetaxel			
	1.25	2.5	5	10
0.126	2.323496	1.885323	1.758744	0.544212
0.17082	2.051868	1.512402	1.846681	0.572855
0.15887	2.219437	1.584118	1.868666	0.598044
0.05147	1.663898	1.81736	0.705269	0.574956
0.16297	1.677798	1.968242	0.794356	0.616025
0.07091	1.718234	2.142616	0.748391	0.517461
0.05592		2.356228		
0.05307		2.550179		
0.09209		2.46444		
0.1161		2.729738		
0.10425		2.785622		
0.08056		2.815714		
		2.685298		
		2.650424		
		2.77404		
		1.31924		
		1.425386		
		1.258585		
		0.750602		
		0.636875		
		0.761817		

**Panel D**

NT	nM Docetaxel			
	1.25	2.5	5	10
0.60948	5.95069	18.94217	27.3777	11.94902
0.6385	5.624236	18.0682	27.50985	10.76
0.55228	3.105399	4.438651	24.2262	6.380013
0.63064	3.20095	4.295962	27.1801	
0.59624	3.017705	4.60045	27.3246	
0.41599	5.748972	18.74869		
0.44502	5.443101	17.88706		
0.82027				
0.67252				

**FIGURE 2**

Panel A		Docetaxel nM				Paclitaxel nM			
		1.25 1.25	2.5 2.5	5 5	10 10	1.25 1.25	2.5 2.5	5 5	10 10
0.126	NT	2.323496	1.885323	1.758744	0.544212	0.663852	1.157381	2.257469	0.427307
0.170823	NT	2.051868	1.512402	1.846681	0.572855	0.627732	1.084831	2.034524	0.421732
0.15887		2.219437	1.584118	1.868666	0.598044	0.635205	1.126555	2.347768	0.385992
0.051466		1.663898	1.81736	0.705269	0.574956			0.732527	
0.162974		1.677798	1.968242	0.794356	0.616025			0.780562	
0.070908		1.718234	2.142616	0.748391	0.517461			0.638459	
0.055916			2.356228						
0.053073			2.550179						
0.092088			2.46444						
0.116097			2.729738						
0.10425			2.785622						
0.080557			2.815714						
			2.685298						
			2.650424						
			2.77404						
			1.31924						
			1.425386						
			1.258585						
			0.750602						
			0.636875						
			0.761817						

Panel B		Docetaxel nM				Paclitaxel nM			
		1.25	2.5	5	10	1.25	2.5	5	10
0.634342	NT	30.28751	21.74215	19.8425	13.47882	2.322385	12.80064	21.41489	24.04128
0.614823		30.7121	22.27552	19.80046	13.269	2.557268	12.23623	21.71081	24.55925
0.460903		26.52423	30.5171	19.6332	13.46102	2.487504	12.75318	24.27309	15.91713
0.480917			30.74212						
0.455471			27.94868						
0.143505									
0.212285									
0.229268									

Panel C		Docetaxel nM				Paclitaxel nM			
		1.25	2.5	5	10	1.25	2.5	5	10
0.609478	NT	5.95069	18.94217	27.3777	11.94902	0.869447	1.62692	6.797906	7.931286
0.6385		5.624236	18.0682	27.50985	10.76	0.931198	1.887095	6.418964	8.447143
0.552283		3.105399	4.438651	24.2262	6.380013	0.944498	1.632256	18.86743	9.182238
0.630635		3.20095	4.295962	27.1801				12.73777	3.672531

0.596237	3.017705	4.60045	27.3246			12.99656	3.927273
0.415993	5.748972	18.74869				9.048648	4.300045
0.445015	5.443101	17.88706				6.041207	
0.820269						6.178767	
0.672519							
0.578824							
0.515356							
0.575777							

**FIGURE 3**

**Panel A**

TNF-alpha concentration in medium of MCF-7									
	NT			2.5 nM Docetaxel			15 nM Docetaxel		
	A:Y1	A:Y2	A:Y3	B:Y1	B:Y2	B:Y3	C:Y1	C:Y2	C:Y3
48 h	0.322246	0.1047144	0.072677	0.8255585	0.925993	1.004345	0.363112	0.429361	0.320221
72 h	0.222	0.2788887	0.31145	1.982784	2.247354	2.262005	0.408591	0.697569	0.568248

**Panel B**

% Trypan-stained MCF-7									
	No Treatment			2.5 nM Docetaxel			15 nM Docetaxel		
	A:Y1	A:Y2	A:Y3	B:Y1	B:Y2	B:Y3	C:Y1	C:Y2	C:Y3
48 h	4.910331	5.574913	4.225352	8	6.410256	12.8	12.90323	16.66667	11.5942
72 h	5.7502	4.892214	4.190337	5.263158	8.333333	8.75	12.5	19.44444	9.259259

**Panel C**

	2.5 nM Docetaxel		2.5 nM Docetaxel
NT		NT	
0.116097	0.750602	0.0231595	0.212725
0.10425	0.636875	0.014296	0.152109
0.080557	0.761817	0.1222308	0.077198
media		lysate	

**Panel D**

	2.5 nM Docetaxel
NT	
0.764	2.81
0.558	7.95
0.691	16.8
0.817	4.52
	20.6

**FIGURE 4**

**Panel A**

NT	NT	Docetaxel	Docetaxel	LPS	LPS
0.126		1.885323		6.704221	
0.170823		1.512402		6.624016	
0.15887		1.584118		6.58226	
0.051466		1.81736			
0.162974		1.968242			
0.070908		2.142616			
0.055916		2.356228			
0.053073		2.550179			
0.092088		2.46444			
0.116097		2.685298			
0.10425		2.650424			
0.080557		2.77404			
		1.31924			
		1.425386			
		1.258585			
		0.7506022			
		0.6368746			
		0.761817			

**Panel B**

NT	NT	Docetaxel	Docetaxel	LPS	LPS
0.609477		18.94217		0.7618468	
0.6385		18.0682		0.7981253	
0.552283		4.438651		0.5199906	
0.630635		4.60045		0.5562691	
0.596237		18.74869			
0.415993		17.88706			
0.445015					

**Panel D**

		nM Docetaxel							
NT	NT	2.5	2.5	5	5	10	10	LPS	LPS
8.992932		8.419748		9.239824		9.014973		8.643001	
9.931528		8.985053		9.43871		8.690874		9.504001	
8.241346		9.170523		9.694858		9.086047		7.956	
9.089897		9.525413		8.563878					
8.990008		10.46637							
9.085901		10.90338							

Panel C		nM Docetaxel			LPS LPS			
NT	NT	2.5	2.5	5		5	10	10
9.273304		11.34115		10.27908		11.20095		78.26811
8.823603		10.98123		10.33914		11.24546		81.12142
9.542653		13.53856		11.57783		11.13399		76.94978
9.36296		12.52252						
9.348104		11.62492						
9.10885		11.60303						

Panel E		nM Docetaxel			LPS LPS			
NT	NT	2.5	2.5	5		5	10	10
0.2108705		0.283452		0.283452		0.260593		1.651347
0.2896642		0.384116		0.336985		0.269736		1.771146
0.1890563		0.302798		0.330475		0.208729		1.433388

Panel F		nM Docetaxel			LPS
NT		2.5	5	10	
0.6930309		0.735699	0.668125	0.472247	0.4792
0.5355238		0.71197	0.592149	0.428047	0.6279
0.5260399		0.645223	0.523449	0.423068	0.618
			0.583426		

## FIGURE 5

Panel A					
TNF-alpha concentration in MB-231 media					
NT	TXT	LPS	LPS-RS	TXT + LPS-RS	LPS + LPS-RS
0.598467	17.03487	3.866861	0.900544	24.47375	0.9139853
0.657573	15.71972	3.941303	0.771132	25.83559	0.8139535
0.732791	16.81154	6.793716	0.831703	25.84369	0.6323282

Panel B					
TNF-alpha levels relative to untreated in MB-231 media					
NT	TXT	LPS	TAK-242	TXT + TAK-242	LPS + TAK-242
1.045333	18.52874	5.290668	0.877241	16.49361	1.824
0.954667	17.52828	5.535634	0.772414	16.99862	1.931034
1	8.907176	3.833853	0.950078	8.524961	1.121685



**FIGURE 6**

**Panel A**

<b>NT</b>	<b>TXT</b>	<b>Marimastat</b>	<b>Marimastat + TXT</b>	<b>LPS</b>	<b>Marimastat + LPS</b>
0.065389	2.380151	0.1052448	2.545491	7.948003	4.152964
0.074263	2.345277	0.0714606	2.920698	9.031589	4.778049
0.08267	2.452545	0.0616523	2.670819	7.099973	5.155903
0.119412	2.300062	0.1424211	1.791307	10.90422	5.053028
0.298297	2.239895	0.2056347	1.669449	10.63969	4.492737
0.255647					

**Panel B**

<b>NT</b>	<b>TXT</b>	<b>Marimastat</b>	<b>Marimastat + TXT</b>
0.852195	5.07384	0.1638837	3.048237
0.775214	5.390136	0.3380102	3.107235
0.843321	5.49666	0.1704391	3.089208

## FIGURE 7

Panel A

<b>MCF-7</b> cc10	<b>TXT8</b>	<b>TXT9</b>	<b>TXT10</b>	<b>TXT11</b>	<b>TXT12</b>
2.181673	0.053946	1.830803	17.73766	21.4299	55.48964
-0.238392	0.254337	5.946181	13.5049	13.98092	62.04313
2.002319	-0.092437	5.103512	22.41457	42.85769	50.03312
-1.02066					
0.0936					
0.3997					
-1.056726					
-0.31453					

Panel B

<b>NT</b>	<b>Tar</b>	<b>H<sup>3</sup> -TXT</b>	<b>H<sup>3</sup> -TXT + Tar</b>	<b>NT</b>	<b>Tar</b>	<b>H<sup>3</sup> -TXT</b>	<b>H<sup>3</sup> -TXT + Tar</b>
0.0445	0.008	14.9905	16.0905	0.124	0.0385	5.9875	12.2365
0.057	0.05	15.571	17.8775	0.06500001	0.047	6.762	13.304
0.049	0.037	16.094	15.9285	0.13	0.0572	6.5325	14.378

## FIGURE 8

note: data points for the clonogenic curves are the 'Mean', which in this case refers to the mean number of colonies counted and then divided by the mean of the control cells (cells that received docetaxel at log concentration of -15)

Panel A

log [docetaxel]	MCF-7TXT10		MCF-7TXT10 + Tar (100nM)		MCF-7cc10		MCF-7cc10 + Tar (100nM)	
	Mean	SEM	Mean	SEM	Mean	SEM	Mean	SEM
-5	0.017964	0.524435	0.104651	0.184032				
-5.48	0.035928	0.305309	0.046512	0.288288				
-5.95	0.125749	0.190032	0.052326	0.246584				
-6.43	0.053892	0.336772	0.034884	0.46442				
-6.91	0.149701	0.168348	0.069767	0.184032				
-7.39	0.137725	0.20326	0.052326	0.296209				
-7.86	0.317365	0.137738	0.034884	0.307366				
-8.34	0.754491	0.096862	0.104651	0.246584				
-8.82	1.023952	0.078701	0.215116	0.14224				
-9.29	0.994012	0.08249	0.47093	0.090894				
-9.77	1.185629	0.065848	0.825581	0.087512				
-15	1	0.067891	1	0.084434				
-6.48					0.016722	0.358917*	0.0301	0.292369*
-6.95					0.046823	0.181903*	0.026756	0.33903*
-7.43					0.006689	0.675347*	0.036789	0.285824*
-7.91					0.043478	0.214933	0.023411	0.494315*
-8.39					0.133779	0.093922	0.153846	0.102043
-8.86					0.123746	0.134968	0.120401	0.134684
-9.34					0.287625	0.062125	0.297659	0.060287
-9.82					0.705686	0.064183	0.809365	0.051013
-10.29					0.849498	0.085196	0.816054	0.060819
-10.77					0.772575	0.074296	1.006689	0.057571
-11.25					0.889632	0.066649	1.177258	0.049192
-15					1	0.055654	1	0.051081

Panel B

Log[docetaxel]	A2780cc12 + TAR		A2780dxl12 + TAR		A2780cc12		A2780dxl12	
	Mean	SEM	Mean	SEM	Mean	SEM	Mean	SEM
-5.52	0.02551	0.239773	0.034856	0.24777	0.012672	0.272731	0.109137	0.246647
-6	0.041327	0.305563	0.044471	0.401342	0.026399	0.236144	0.192893	0.23255
-6.48	0.021429	0.387713	0.039663	0.37755	0.017951	0.287115	0.236041	0.1643
-6.95	0.018367	0.303762	0.027644	0.40671	0.024287	0.339229	0.332487	0.127448
-7.43	0.02551	0.272484	0.030048	0.32692	0.030623	0.40021	0.611675	0.110323
-7.91	0.037755	0.234222	0.030048	0.237924	0.030623	0.350442	0.949239	0.113952
-8.39	0.036735	0.199364	0.067308	0.181964	0.029567	0.301179	1.032995	0.110846
-8.86	0.115306	0.191799	0.126202	0.165093	0.263992	0.090422	1.005076	0.109116

-9.34	0.404082	0.121664	0.540865	0.079941	0.700106	0.065401	0.875635	0.096196
-9.82	0.860204	0.074396	0.84976	0.100283	1.089757	0.066986	1.068528	0.107529
-10.29	1.036735	0.106647	0.778846	0.082996	1.208025	0.081497	1.192893	0.092443
-15	1	0.082246	1	0.070694	1	0.057534	1	0.10704

**FIGURE 9****(Panel A)**

<b>MCF-7</b>						
cc10	TXT7	TXT8	TXT9	TXT10	TXT11	TXT12
0.094824	0.029384	0.017331	0.84226	2.528026	0.280886	0.201999
0.109765	0.025897	-0.005777	0.978918	2.634201	0.20419	0.213653
0.124905	0.027391	-0.005478	0.918557	2.645686	0.193931	0.188254

**(Panel C)**

<b>MCF-7</b>						
cc10	TXT7	TXT8	TXT9	TXT10	TXT11	TXT12
11.29996	31.93417	48.83867	81.86462	102.7976	33.03342	15.0359
9.792383	32.62696	49.54453	74.95169	95.19003	31.39389	14.44706
11.84771	33.56375	47.20848	79.0748	93.64388	35.74108	14.85664

**(Panel E)**

<b>MCF-7</b>						
cc10	TXT7	TXT8	TXT9	TXT10	TXT11	TXT12
0.22707	0.470322	1.113426	6.6816	10.8837	1.098549	0.286578
0.252909	0.304326	1.141614	6.654978	10.62688	0.84564	0.20097
0.275094	0.267786	1.148139	6.828804	11.18124	0.97614	0.190008

**(Panel B)**

<b>A2780</b>			
cc12	DXL10	DXL11	DXL12
0.341116	0.992879	3.032887	2.299098
0.407046	0.952004	3.18545	2.295106
0.372648	0.980351	3.130243	2.517758

**(Panel D)**

<b>A2780</b>			
cc12	DXL10	DXL11	DXL12
9.805944	10.07681	9.295218	9.742544
10.39205	10.00777	8.305466	9.996146
10.62663	9.535435	9.543184	9.335724

**(Panel F)**

<b>A2780</b>			
cc12	DXL10	DXL11	DXL12
0.018275	2.616266	1.566756	0.154197
0.054826	3.018663	2.018267	0.174757
0.099943	3.125059	1.880175	0.139977

## FIGURE 10

MCF-7TXT10

NT	Marimast at	TXT	Marimast at + TXT	LPS	Marimast at + LPS
0.343812	0.243754	0.3470631	0.295641	2.585182	1.487322
0.358251	0.243903	0.3689741	0.297289	2.582885	1.433416
0.359813	0.185565	0.3858823	0.305803	2.799413	1.108661
0.360292	0.215526				
0.34817	0.23348				

**FIGURE 11**

**Panel A**

NT	TXT	LPS	NT	TXT	LPS
1	12.41692	33.49213	1	1.513043	9.932932
1	13.33832	32.69291	1	1.514578	9.924106
1	12.9274	33.44882	1	1.261722	10.75606

**Panel B**

NT	TXT	LPS	NT	TXT	LPS
1	27.50893	1.257038	1	0.895005	1.251036
1	30.58163	1.590821	1	1.050763	1.289561
1	30.13967	1.193984	1	1.178354	1.27794

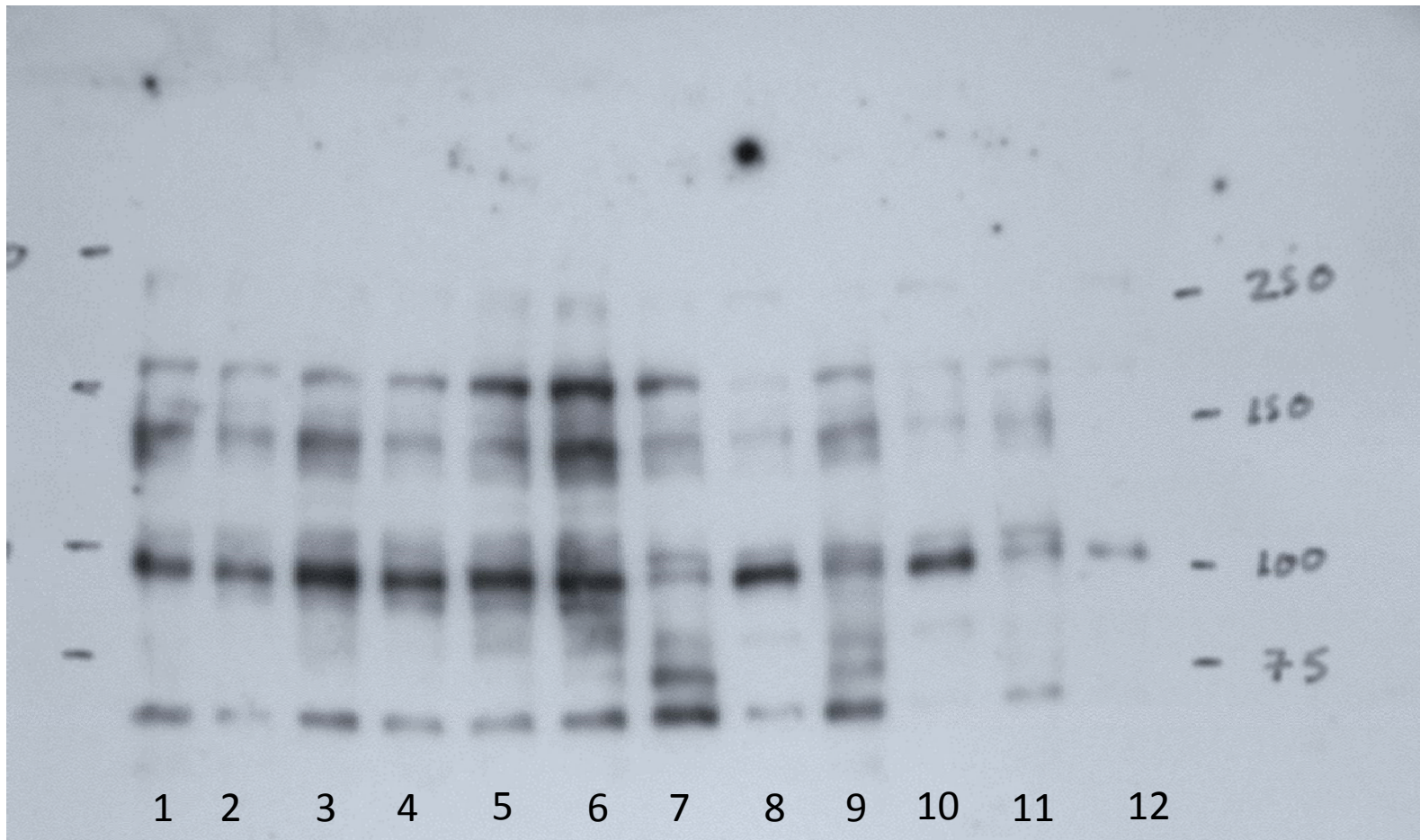
**Immunoblots for Figure 12**  
**RAW DATA**



# TRIF Immunoblot Loading

1. A2780<sub>CC12</sub> Replicate 1
2. A2780<sub>DXL12</sub> Replicate 1
3. A2780<sub>CC12</sub> Replicate 2
4. A2780<sub>DXL12</sub> Replicate 2
5. A2780<sub>CC12</sub> Replicate 3
6. A2780<sub>DXL12</sub> Replicate 3
7. MCF-7<sub>CC10</sub> Replicate 1
8. MCF-7<sub>TXT10</sub> Replicate 1
9. MCF-7<sub>CC10</sub> Replicate 2
10. MCF-7<sub>TXT10</sub> Replicate 2
11. MCF-7<sub>CC10</sub> Replicate 3
12. MCF-7<sub>TXT10</sub> Replicate 3

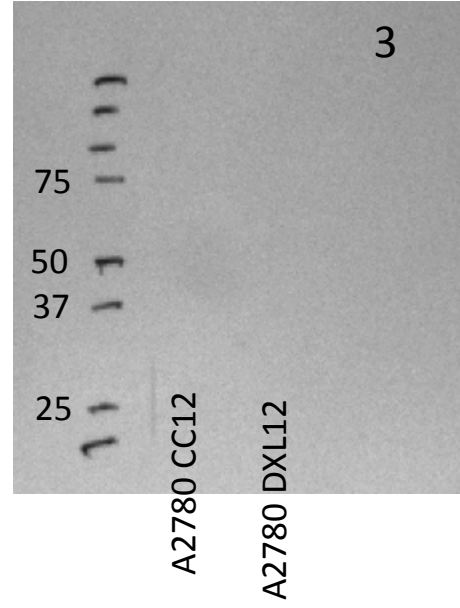
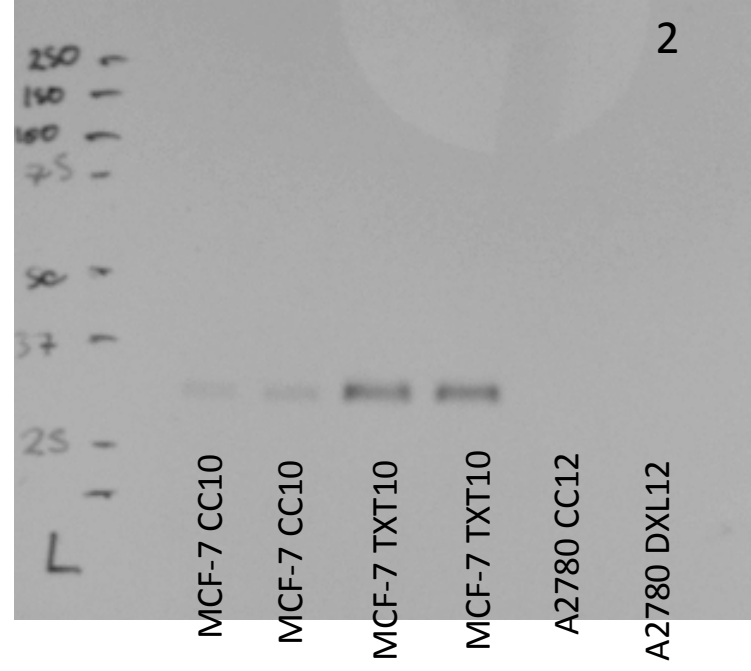
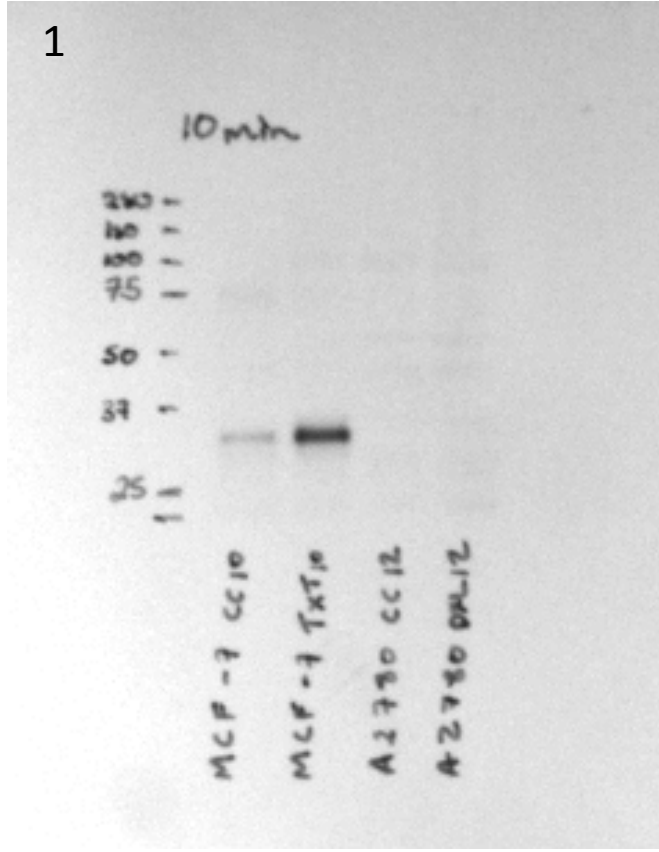
# TRIF Antibody 1:700



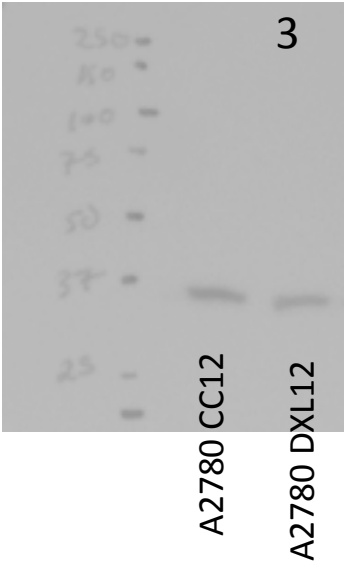
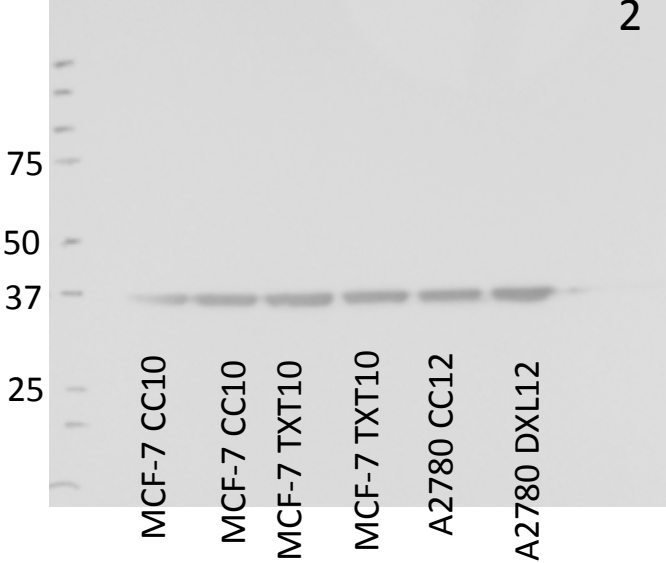
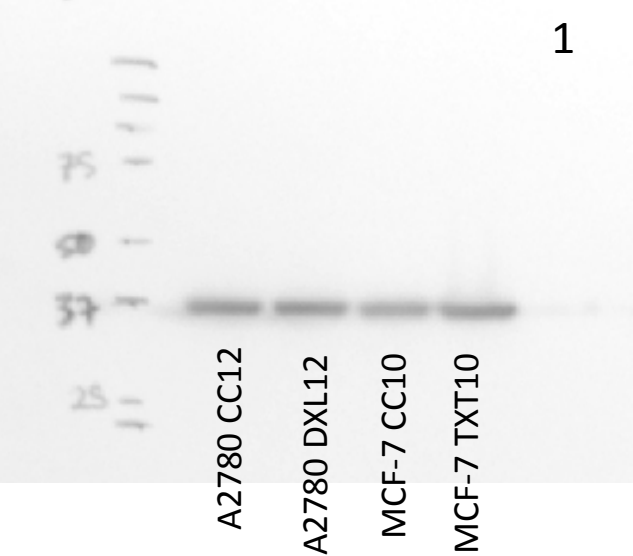
# Gamma Tubulin Antibody 1:10,000 Loading Control for TRIF Immunoblot



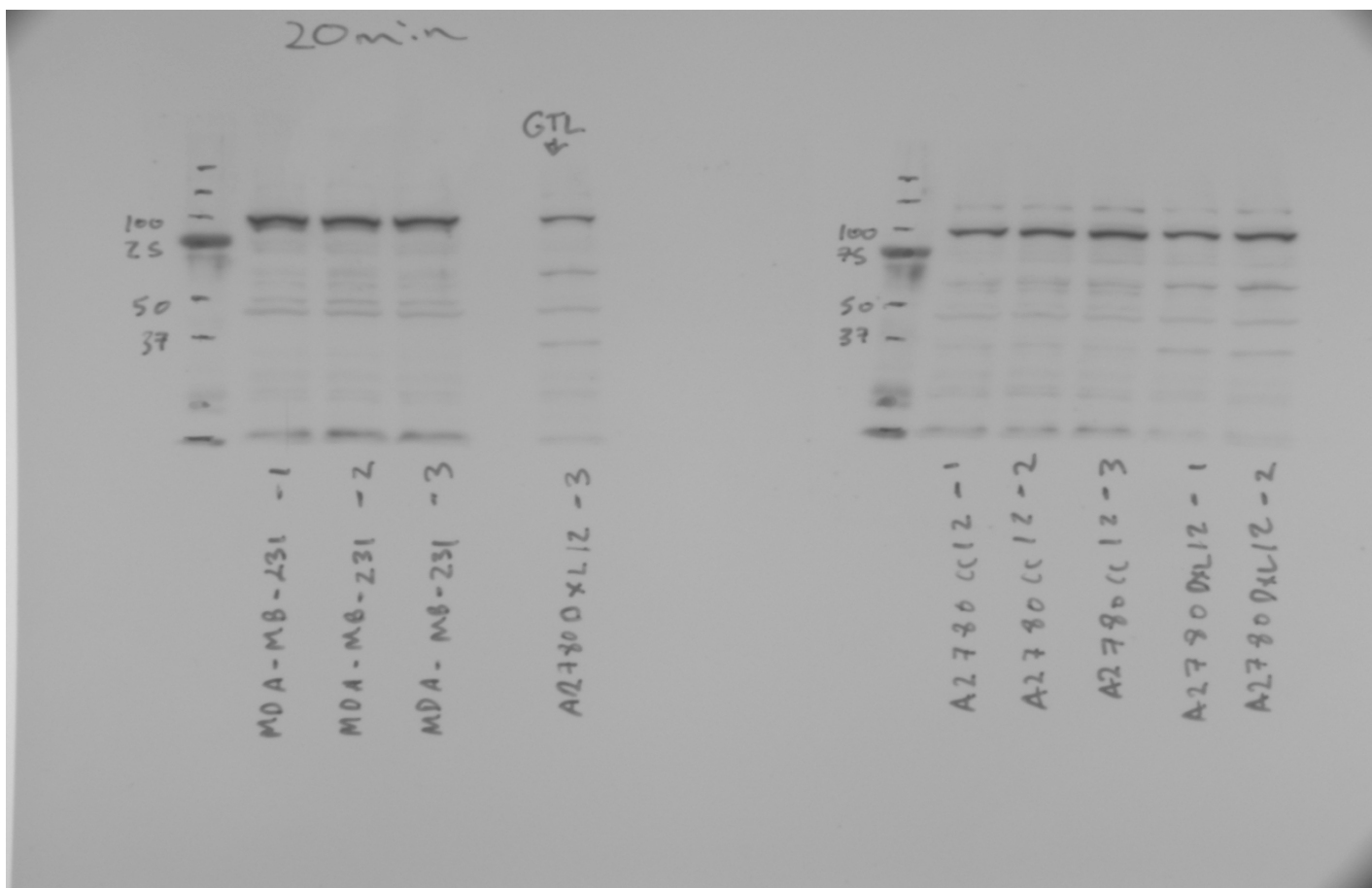
# MyD88 Antibody 1:1000



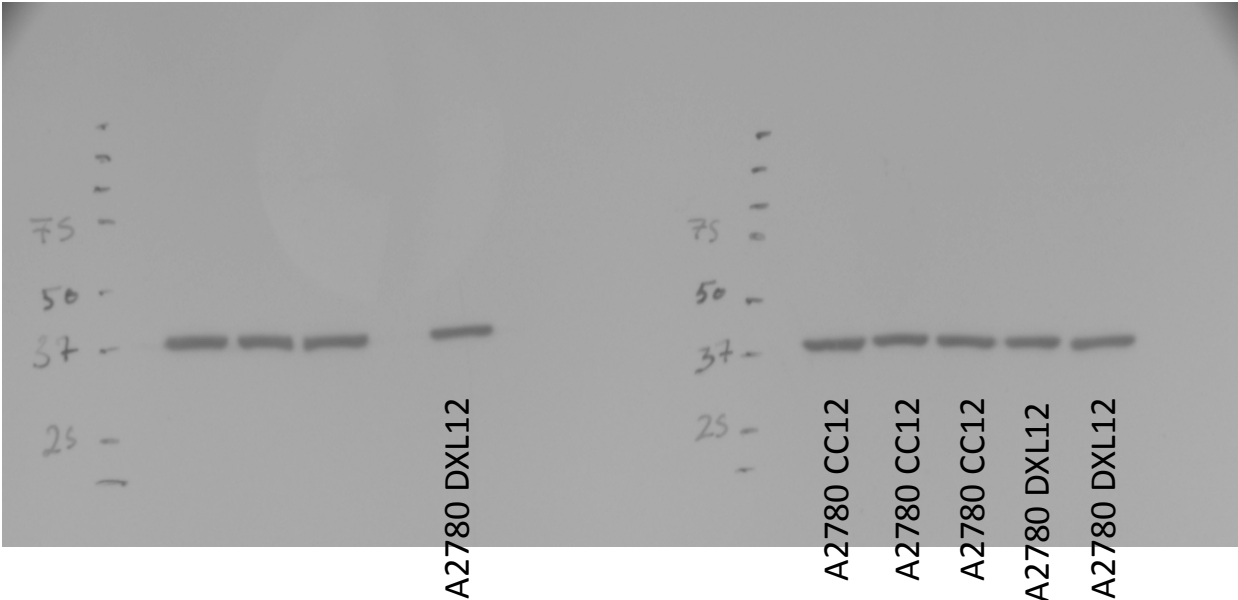
**GAPDH Loading Controls 1:10000  
For MyD88 Immunoblots**



# TLR4 Antibody: 1:250

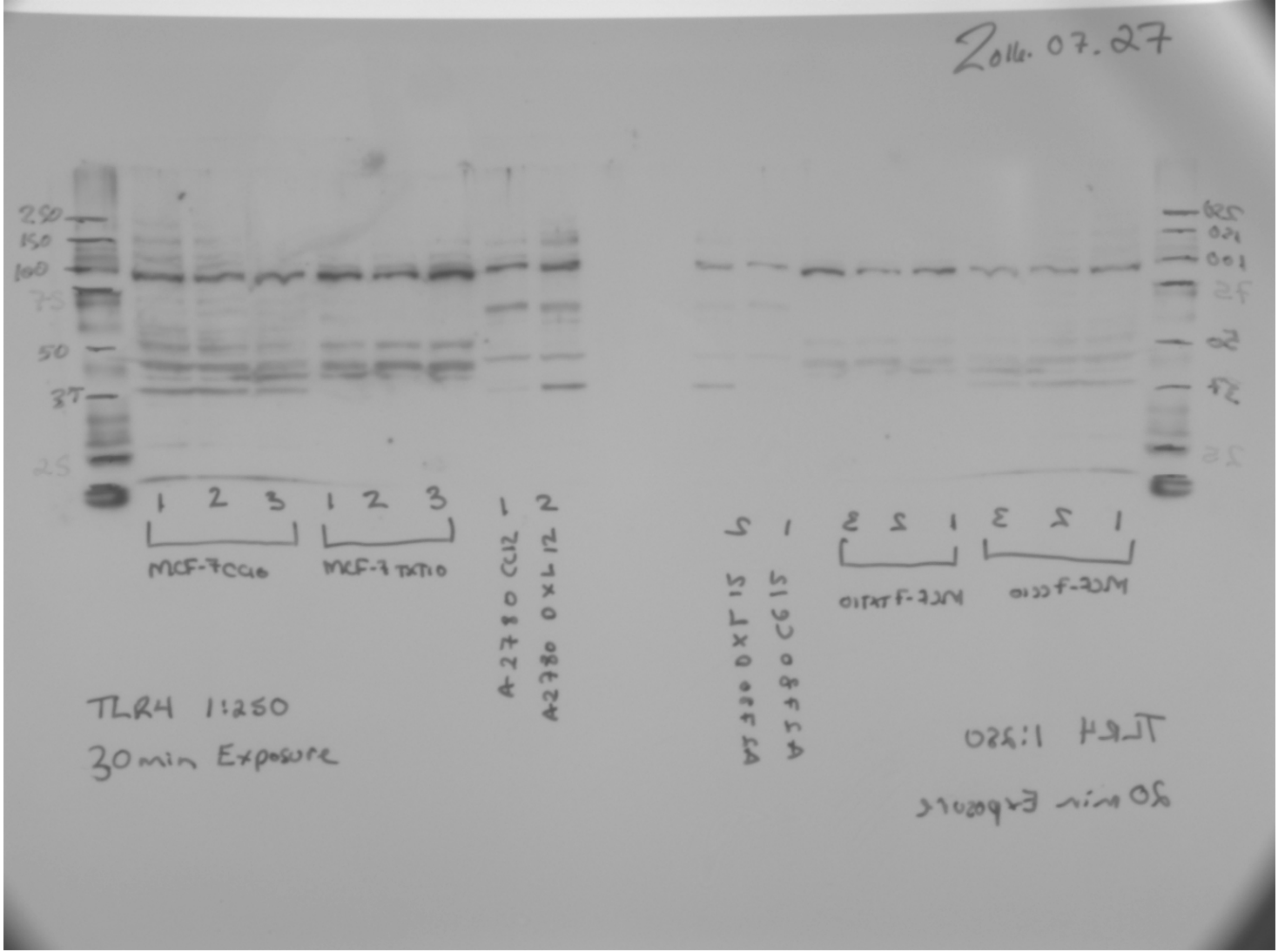


**GAPDH Loading Control 1:10,000  
For TLR4 Immunoblot**



# TLR4 Antibody 1:250

2016.07.27

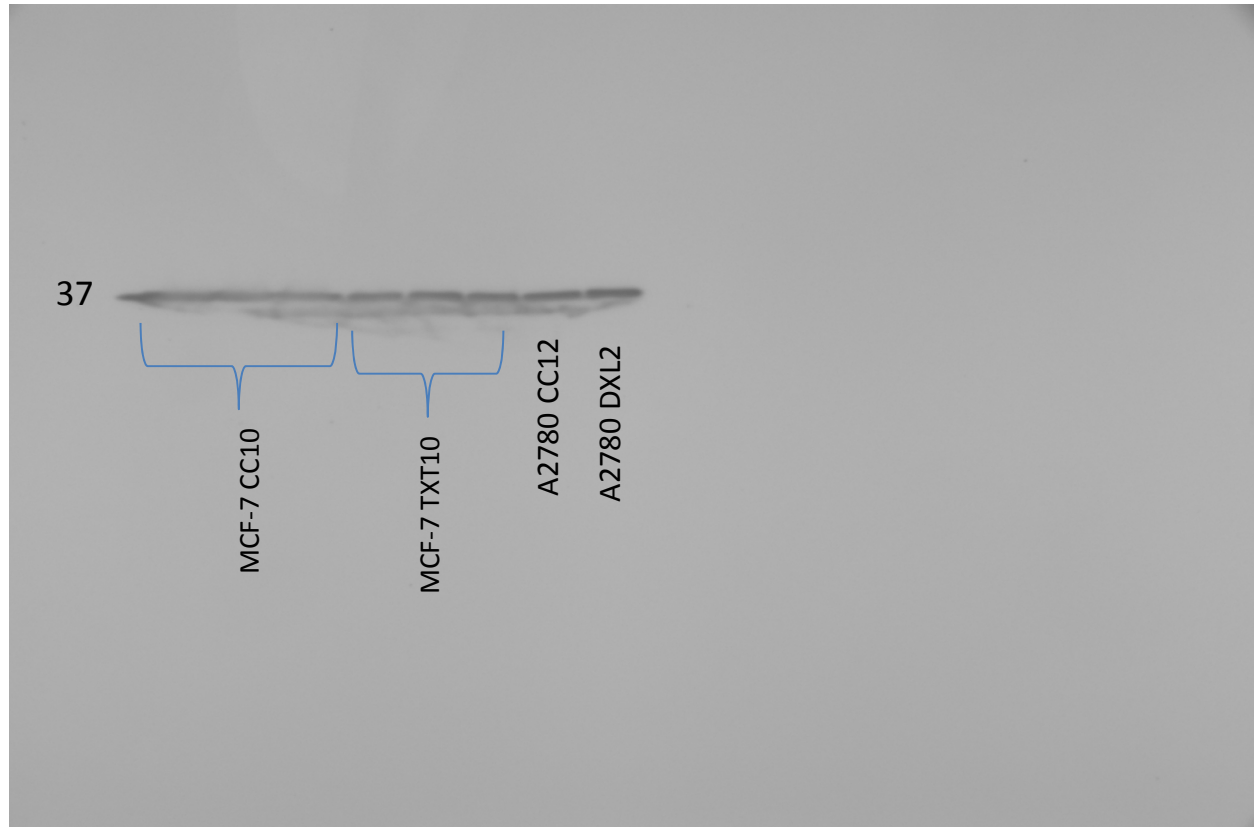


TLR4 1:250  
30 min Exposure

TLR4 1:250  
30 min Exposure



**GAPDH Loading control 1:10,000  
For Prior TLR4 Immunoblot**



**FIGURE 12****Panel C**

	<b>MCF-7</b> CC10			<b>MCF-7</b> TXT10		
	<b>A:Y1</b>	<b>A:Y2</b>	<b>A:Y3</b>	<b>B:Y1</b>	<b>B:Y2</b>	<b>B:Y3</b>
TLR4	1.033333	0.884615	0.84	1.222222	0.83871	1.28125
MyD88	0.230769	0.181818	0.142857	0.8	0.5	0.521739

**Panel E**

	<b>MCF-7</b>	<b>MCF-7</b>
	CC10	TXT10
TRIF	0.489796	0.848101
	0.433962	0.833333
	0.727273	0.764706

**Panel D**

	<b>A2780</b> CC12			<b>A2780</b> DXL12		
	<b>A:Y1</b>	<b>A:Y2</b>	<b>A:Y3</b>	<b>B:Y1</b>	<b>B:Y2</b>	<b>B:Y3</b>
TLR4	2.25	3.210526	3.045455	2.4	2.52381	1.952381
MyD88	0	0	0	0	0	0

**Panel F**

	<b>A2780</b>	<b>A2780</b>
	CC12	DXL12
TRIF	0.897059	0.87931
	0.805556	0.836957
	0.669811	0.47541

**FIGURE 13****Panel A**

MCF-7cc10				MCF-7txt10			
NT	TXT	Tariquida r	Tariquidar + TXT	NT	TXT	Tariquida r	Tariquidar + TXT
1.020604	3.335888	0.847628	3.307618	0.9336385	1.436928	0.799914	1.963387
1.103977	3.612842	0.889315	2.89794	1.050343	1.425057	0.780892	2.031178
0.875419	3.932917	0.94873	3.48826	1.016018	1.222826	0.834096	2.202517

**Panel B**

A2780cc12				A2780dxl12			
NT	TXT	Tariquida r	Tariquidar + TXT	NT	TXT	Tariquida r	Tariquidar + TXT
0.982068	13.92257	0.985736	14.13653	0.9713228	0.895005	0.938714	2.00703
1.005604	12.24697	1.044422	12.16505	0.96716	1.050763	0.820074	1.93321
1.012328	12.23688	1.146205	11.64177	1.061517	1.178354	0.871485	2.048104

## FIGURE 14

note: data points for the clonogenic curves are the values in the 'Mean' column, which in this case refers to the mean number of colonies counted and then divided by the mean of the control cells (cells that received docetaxel at log concentration of -15)

Panel A

log [docetaxel]	MCF-7TXT10			MCF-7TXT10 + LPS (10ug/ml)			MCF-7cc10			MCF-7cc10 + LPS (10ug/ml)		
	Mean	SEM	N	Mean	SEM	N	Mean	SEM	N	Mean	SEM	N
-5	0.049587	0.331724*	12	0.028986	0.286971*	12						
-5.48	0.024793	0.464867*	12	0.007246	0.676278*	12						
-5.95	0.053719	0.220517*	12	0.028986	0.42968*	12						
-6.43	0.090909	0.239423*	12	0.036232	0.360666*	12						
-6.91	0.202479	0.127318	12	0.083333	0.223754	12						
-7.39	0.454545	0.134889	12	0.155797	0.152996	12						
-7.86	0.714876	0.099956	12	0.416667	0.10472	12						
-8.34	1.243802	0.08439	12	0.597826	0.07281	12						
-8.82	1.057851	0.103519	12	0.702899	0.081027	12						
-9.29	1.289256	0.087881	12	1.057971	0.088057	12						
-9.77	1.132231	0.07188	12	1.021739	0.064537	12						
-15	1	0.08922	12	1	0.074925	12						
-6.48							0.029412	0.570453*	12	0.015	0.719802*	12
-6.95							0.022059	0.529115*	12	0.015	0.719802*	12
-7.43							0.051471	0.341609*	12	0.02	0.566697*	12
-7.91							0.095588	0.341223*	12	0.045	0.295193*	12
-8.39							0.154412	0.228867	12	0.025	0.466379*	12
-8.86							0.323529	0.163613	12	0.155	0.148886	12
-9.34							0.448529	0.160252	12	0.185	0.121861	12
-9.82							0.698529	0.157328	12	0.385	0.105963	12
-10.29							1.117647	0.10509	12	0.625	0.093556	12
-10.77							0.698529	0.118806	12	0.86	0.08437	12
-11.25							1.147059	0.107417	12	0.96	0.081807	12
-15							1	0.120291	12	1	0.076989	12

Panel B

log [docetaxel]	A2780 <sub>DXL12</sub> A2780 <sub>DXL12</sub>			A2780 <sub>DXL12</sub> + LPS A2780 <sub>DXL12</sub> + LPS			A2780 <sub>CC12</sub> A2780 <sub>CC12</sub>			A2780 <sub>CC12</sub> + LPS A2780 <sub>CC12</sub> + LPS		
	Mean Mean	SEM SEM	N N	Mean Mean	SEM SEM	N N	Mean Mean	SEM SEM	N N	Mean Mean	SEM SEM	N N
-5	0		12	0		12						
-5.48	0.012821	0.718312*	12	0		12						
-5.95	0		12	0		12						
-6.43	0.012821	0.718312*	12	0.03211	0.332089*	12						
-6.91	0.141026	0.145281	12	0.059633	0.267	12						
-7.39	0.482906	0.115641	12	0.422018	0.077862	12						
-7.86	0.700855	0.082771	12	0.490826	0.059803	12						
-8.34	0.846154	0.052356	12	0.724771	0.080545	12						
-8.82	0.833333	0.0438	12	0.825688	0.067765	12						
-9.29	1.089744	0.066449	12	0.830275	0.071976	12						
-9.77	1.141026	0.043191	12	0.912844	0.069377	12						
-15	1	0.051324	12	1	0.070973	12						
-5.48							0		12	0		12
-5.96							0		12	0		12
-6.44							0		12	0		12
-6.91							0		12	0		12
-7.39							0		12	0		12
-7.87							0		12	0		12
-8.34							0		12	0		12
-8.82							0.442953	0.061858	12	0.238095	0.08237	12
-9.3							0.671141	0.051374	12	0.866667	0.04393	12
-9.78							0.852349	0.04904	12	1.257143	0.065782	12
-10.25							0.885906	0.07257	12	1.047619	0.05004	12
-15							1	0.055695	12	1	0.066019	12

## S1 FIGURE

S1

NT	TNF- $\alpha$	NT
2.582826	-0.386574	14.03643
-0.683493	-0.372971	16.23155
1.267765	0.111289	13.99746
MCF-7cc10		MCF-7txt10