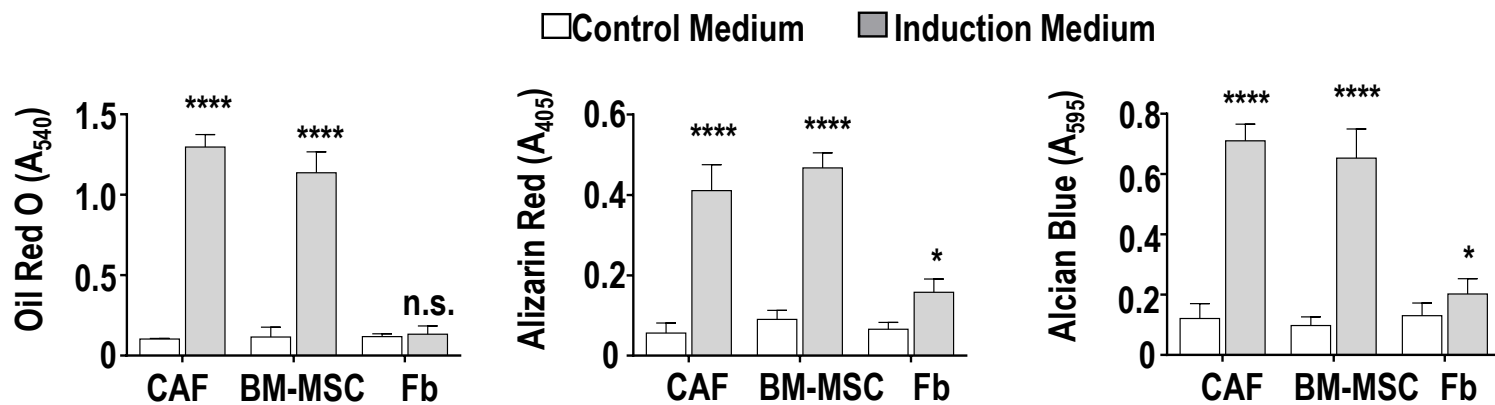
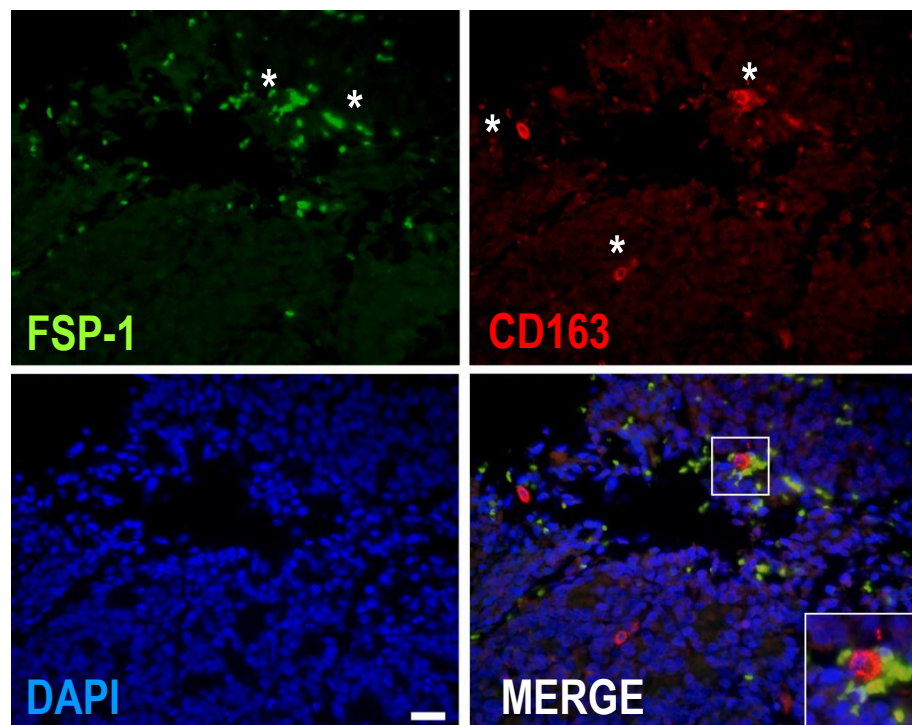


Supplementary Figure S2. CAF isolated from patients with NB share characteristics with MSC.

A: Histogram representing the quantification of differentiated cells by measuring the absorbance (\pm SD) of solubilized Oil Red O staining (adipocytes), Alizarin Red (osteocytes) and Alcian Blue (chondrocytes) from duplicate wells, showed in Fig.1D; **B:** Representative images of dual immunofluorescent staining of sections of NB tumors (n=3) for FSP-1 (green) and CD163 (red) as described in Materials and Methods and counterstained with DAPI. Scale bar = 50 μ m; **C:** Scatter diagrams of mRNA expression of FSP-1 and CD163 in primary tumors of children with high-risk NB (n=219). Spearman correlation values and regression lines for the entire dataset and subsets of samples with MYCN-A (blue line) and those with MYC-NA (red line). *p<0.05; ****p< 0.0001; n.s. = not significant.

A**B****C**