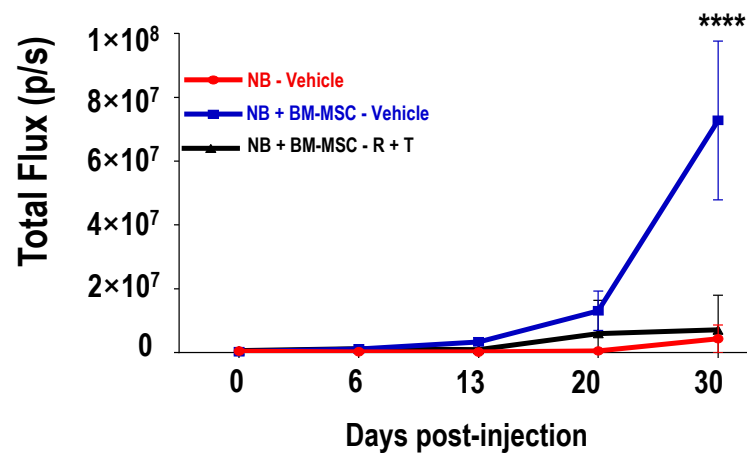
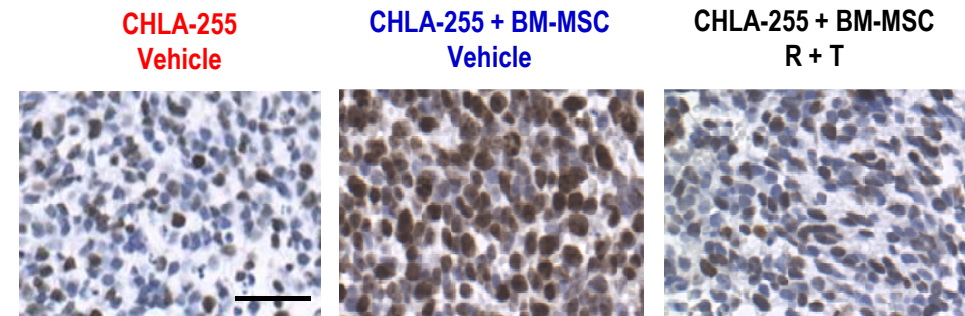
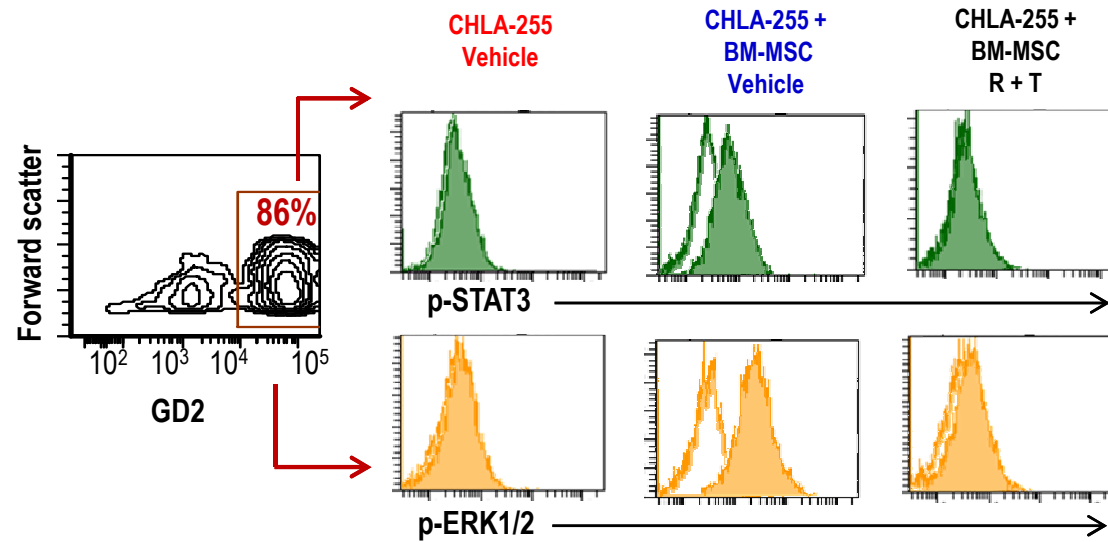


**Supplementary Figure S7. Combination of ruxolitinib and trametinib inhibits the growth of subcutaneous NB tumors, cell proliferation and STAT3 and ERK1/2 activation in vivo. A:** Mean ( $\pm$ SD) bioluminescence signal intensity (p/s = photons per second) over time of mice implanted subcutaneously in mice with and without BM-MSC as shown in Fig. 6A; **B:** Representative image of Ki-67 expression in tumors for each group to illustrate data shown in Fig. 6D. Scale bar = 50  $\mu$ m. **C:** Representative flow cytometry analysis for p-STAT3 and p-ERK1/2 in GD2-positive NB cells harvested from tumors shown in Fig. 6A and used to generate the data in Fig. 6E. In the representative histogram overlay, the open area represents the isotype control and the closed area represents the specific staining. \* $p < 0.05$ ; \*\*\* $p < 0.001$ ; \*\*\*\* $p < 0.0001$

**A****B****C****Supplementary Figure S7**