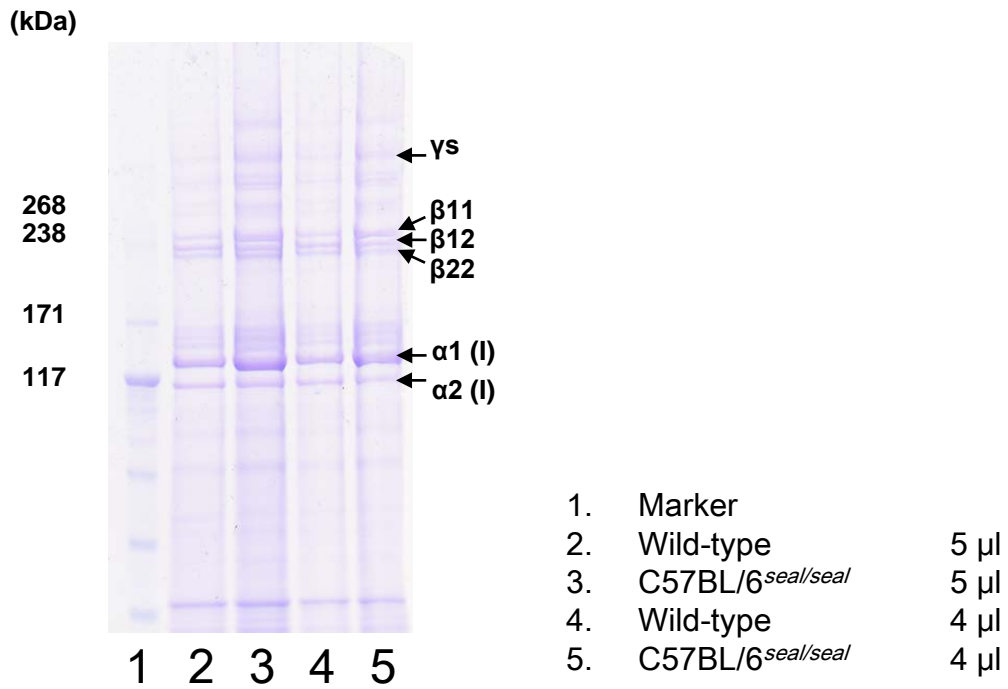


An ENU-induced splice site mutation of mouse *Col1a1* causing recessive osteogenesis imperfecta and revealing a novel splicing rescue

Koichi Tabeta, Xin Du, Kei Arimatsu, Mai Yokoji, Naoki Takahashi, Norio Amizuka, Tomoka Hasegawa, Karine Crozat, Tomoki Maekawa, Sayuri Miyauchi, Yumi Matsuda, Takako Ida, Masaru Kaku, Kasper Hoebe, Kinji Ohno, Hiromasa Yoshie, Kazuhisa Yamazaki, Eva Marie Y. Moresco, Bruce Beutler

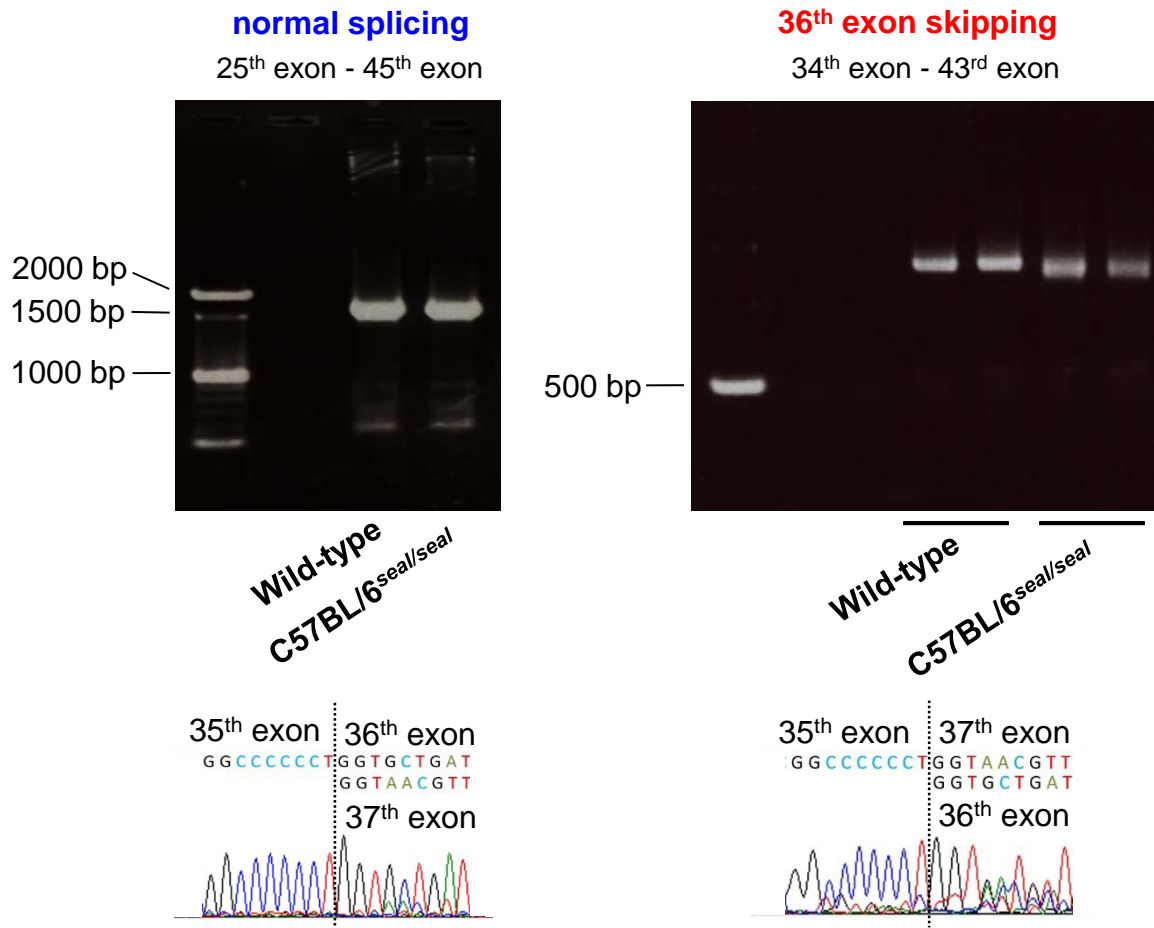
## Supplementary Fig. S1.



The full-length gel image for Figure 6B.

0.1 mg of demineralized freeze dried bone from wild-type and *seal* mice were lysed in 100  $\mu$ l of SDS sample buffer. The indicated volumes were loaded on the gel.

## Supplementary Fig. S2.



Sequence analyses and gel images of spliced transcripts of *Col1a1<sup>seal</sup>* minigene exon 25-45 (left) and 34-43 (right). *Col1a1<sup>seal</sup>* minigene exon 25-45 spliced correctly (left). The major splice product from minigene exon 34-43 lacked exon 36 and gel images of *Col1a1<sup>seal</sup>* is shifted compared with wild-type.

**Table S1. Primers for constructing minigenes**

	<b>Location</b>	<b>Sequence (Forward) 5'-3'</b>	<b>Location</b>	<b>Sequence (Reverse) 5'-3'</b>
<b>exon 25-45</b>	7533-	atgggattccctggacctaag	13149-	acttatgcctctgtcacctggt
	7553		13127	
<b>exon 34-43</b>	10307-	atgaagctggtcccagtggtc	12538-	aaccacgatcgccattcttg
	10326		12520	
<b>exon 26-39</b>	7563-	agtgagtattcagtgaggaacactaca	11407-	aggacctttgccccctcttt
<b>+intron 25</b>	7590	ga	11388	
<b>exon 26-39</b>	8090-	aaacctggaaggctggagag	11407-	aggacctttgccccctcttt
	8109		11388	

Referenced sequence IDs for *Col1a1*: NM\_007742.3 (transcript\_id);  
MGI:88467 (gene\_id)