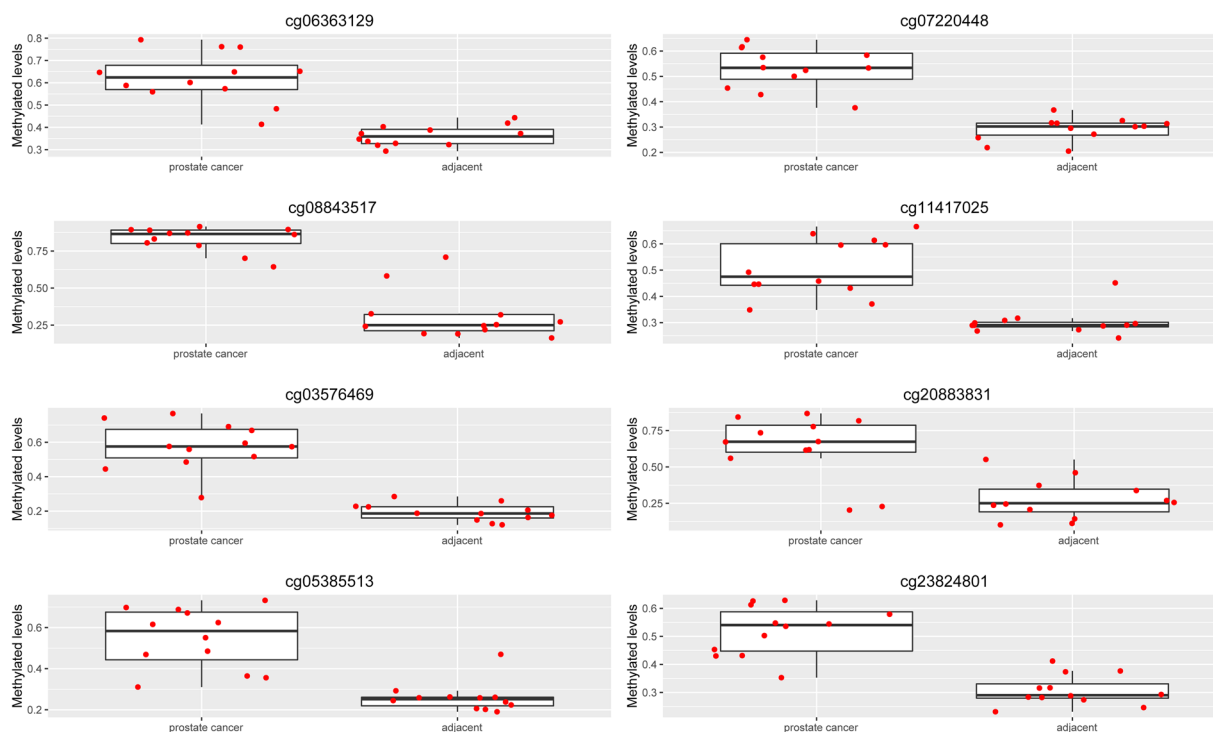


Promoter DNA methylation analysis reveals a combined diagnosis of CpG-based biomarker for prostate cancer

SUPPLEMENTARY FIGURE AND TABLES



Supplementary Figure 1: The methylation levels of eight CpGs (cg06363129, cg08843517, cg03576469, cg05385513, cg07220448, cg11417025, cg20883831, and cg23824801) in 12 tumor samples and matched adjacent tissues from GSE74013.

Supplementary Table 1: The specific primers of methylated sites

Sites	Gene	Primer	5'- 3' base sequence
cg06363129	SOSTDC1	F	GTAGAAAAGGAGGAGTTTGGTATAT
		R	CAAAACAACCTATAAAAAAACCAATCTCTT
		S	ATATAAATTGTTTGAAATTTTAGAG
cg07220448	SOSTDC1	F	GTAGAAAAGGAGGAGTTTGGTATAT
		R	CAAAACAACCTATAAAAAAACCAATCTCTT
		S	ATATAAATTGTTTGAAATTTTAGAG
cg11417025	SOSTDC1	F	GTAGAAAAGGAGGAGTTTGGTATAT
		R	CAAAACAACCTATAAAAAAACCAATCTCTT
		S	ATATAAATTGTTTGAAATTTTAGAG
cg05385513	EFEMP1	F	GGTTTGGTTAGGTAGGGAGATGA
		R	ACCAACCCACAAAACCTTACCATAA
		S	TAGGGAGATGAGGTT
cg08843517	CYBA	F	GGGATATTTTTTTAGGTTGTAGTTTTTAT
		R	ACAACCCTACACCCTACAAATA
		S	GATAAGAATTAGGTTGGGATATTG

F: forward primer; R: reverse primer; S: sequencing primer.

Supplementary Table 2: 1585 differential CpGs within promoter

See Supplementary File 1

Supplementary Table 3: Diagnostic methylation CpGs in prostate cancer

See Supplementary File 2

Supplementary Table 4: The diagnostic methylation CpGs in 11 kinds of solid tumors

See Supplementary File 3