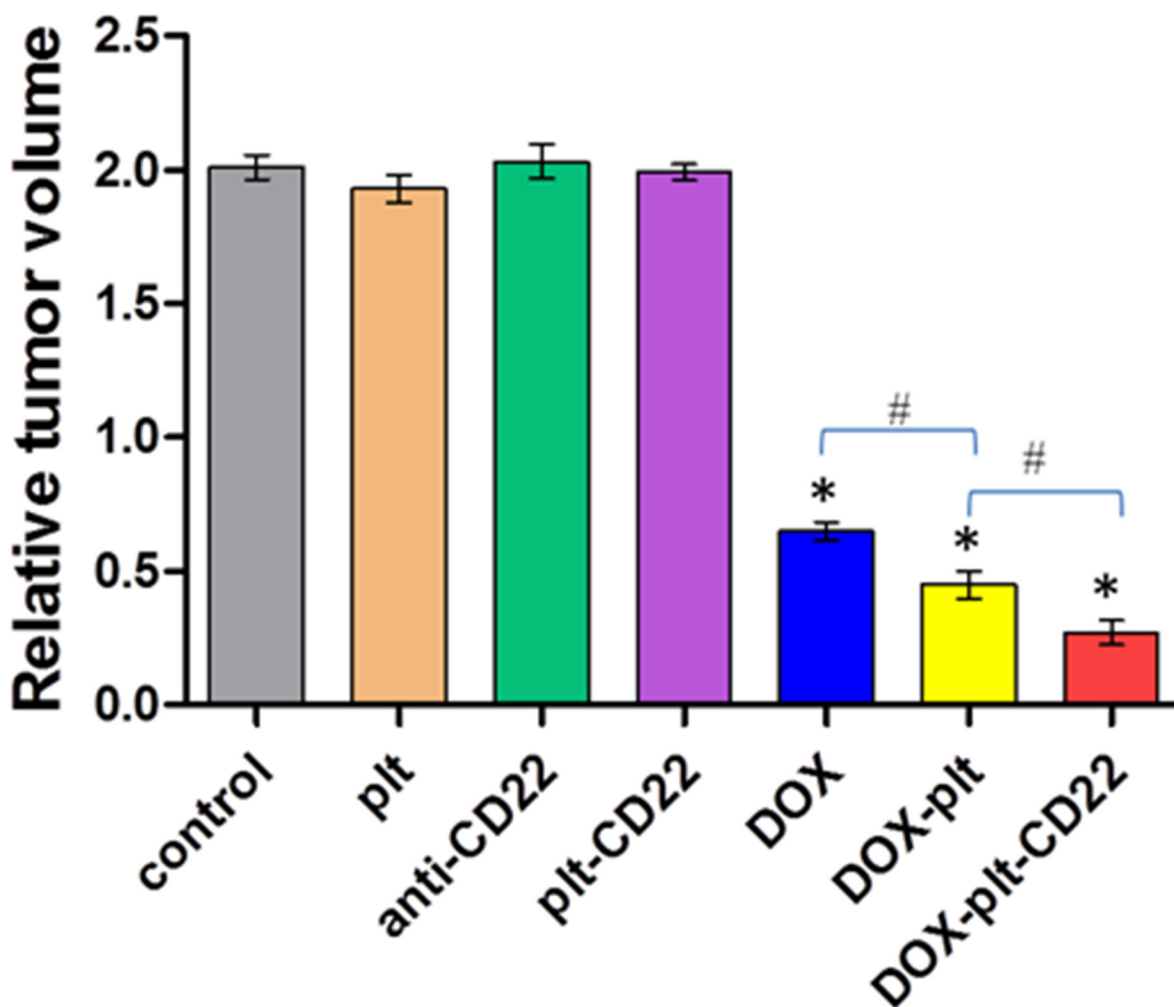
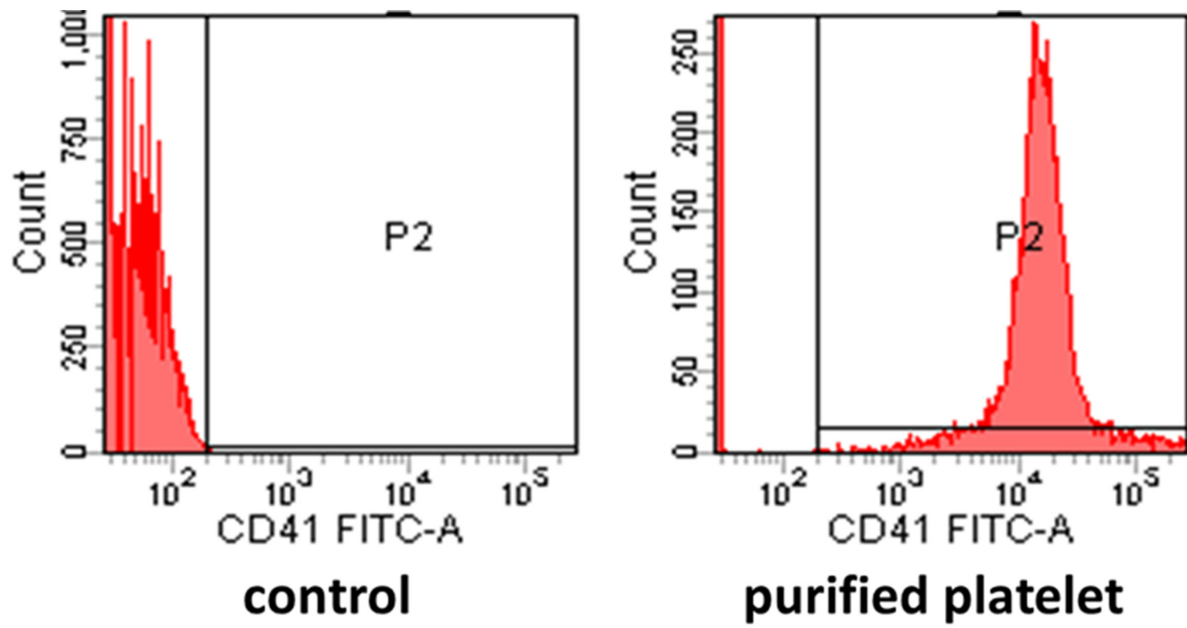


Doxorubicin-loaded platelets conjugated with anti-CD22 mAbs: a novel targeted delivery system for lymphoma treatment with cardiopulmonary avoidance

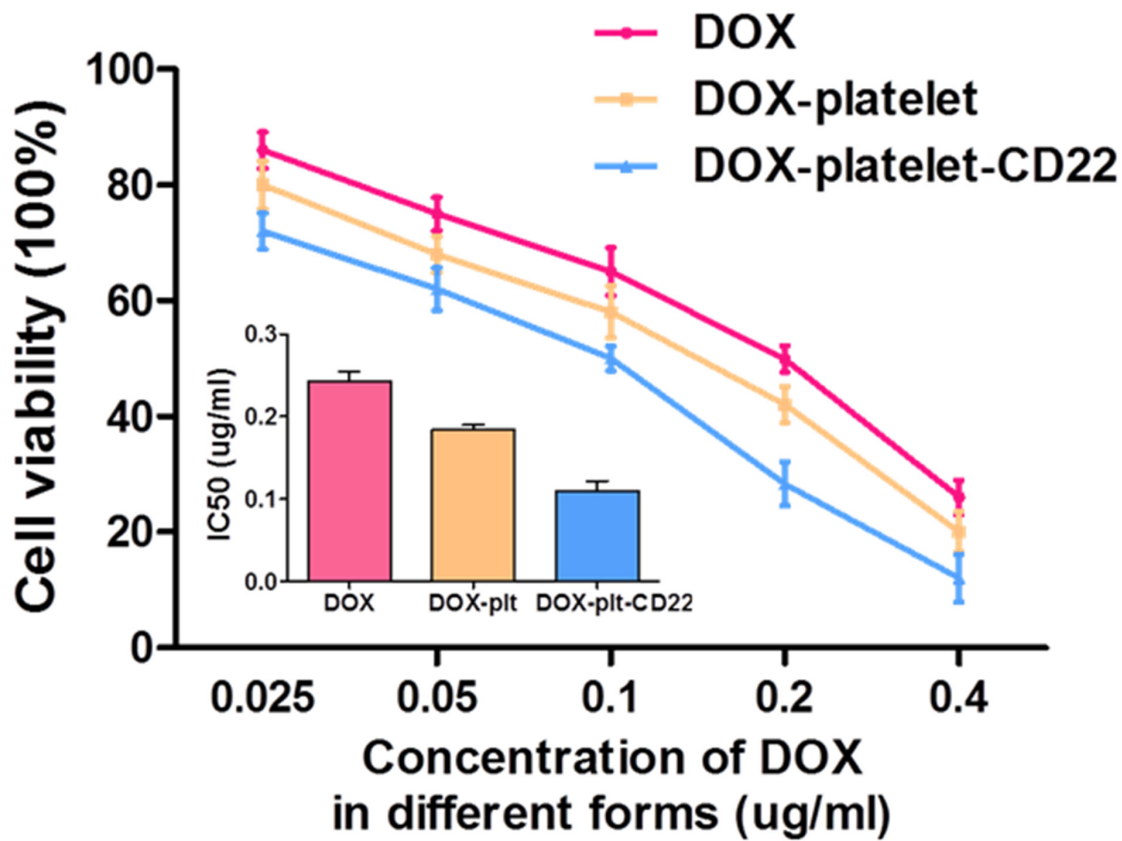
SUPPLEMENTARY FIGURES



Supplementary Figure 1: The final relative volume of tumors from mice with different treatments. The final volumes of tumors from the DOX-platelet-CD22 group were smallest (* $P < 0.05$ when compare with controls, # $P < 0.05$).



Supplementary Figure 2: Purity of platelet population detected by FCM analysis. The purity exceeds 96%.



Supplementary Figure 3: The cytotoxic effect of DOX, DOX–platelet and DOX–platelet–CD22 against Raji cells with different concentration of DOX; Inset: The IC₅₀ of DOX in different forms for Raji cells. The IC₅₀ values for DOX, DOX–platelet, and DOX–platelet–CD22 are 0.242, 0.192, and 0.09 μg/mL, respectively.