

Programmed death-ligand 1 (PD-L1) expression in tumour cell and tumour infiltrating lymphocytes of HER2-positive breast cancer and its prognostic value

Ahrong Kim, MD, PhD¹, So Jeong Lee, MD¹, Young-Keum Kim, MD¹, Won-Young Park, MD¹, Do Youn Park, MD, PhD¹, Jee Yeon Kim, MD, PhD², Chang Hun Lee, MD, PhD¹, Gyungyub Gong, MD, PhD³, Gi Young Huh, MD, PhD¹, Kyung Un Choi, MD, PhD^{1*}

Author Affiliations:

¹Department of Pathology, BioMedical Research Institute, Pusan National University Hospital, Pusan, Korea

²Department of Pathology, Pusan National University Yangsan Hospital, Yangsan, Korea

³Department of Pathology, Asan Medical Center, University of Ulsan College of Medicine, Seoul, Korea

Supplementary Table 1. Basic data for 167 HER2-positive breast cancers

Characteristic	Number (%) [*]
Age, mean \pm SD ^{**}	52.59 \pm 10.126 years
Size, mean \pm SD ^{**}	3.213 \pm 1.773 cm
Side	
Left	93 cases (55.7)
Right	74 cases (44.3)
Histologic grade	
Grade 1, 2	62 (37.1)
Grade 3	105 (62.9)
Nuclear grade	
Grade 1, 2	29 (17.4)
Grade 3	138 (82.6)
Necrosis	
Absent	57 (34.1)
Present	110 (65.9)
Lymphovascular invasion	
Absent	90 (53.9)
Present	77 (46.1)
Lymph node metastasis	
Absent	78 (46.7)
Present	89 (53.3)
Stage	
Early (stage I, II)	126 (75.4)
Advanced (stage III, IV)	41 (24.6)
HR expression	
Positive	89 (53.3)
Negative	78 (46.7)
TILs level	
\leq 10%	61 (36.5)
20-60%	74 (44.3)
>60%	32 (19.2)
TLSs around DCIS	
Low	102 (61.1)
High	65 (38.9)
TLSs around invasive component	
Low	109 (65.3)
High	58 (34.7)

*except for age and size

^{**}SD, standard deviation

Supplementary Table 2. PD-L1 expression and TILs level in total 167 HER2-positive breast cancers

Characteristic	Number (%)
PD-L1 expression in tumour cells	
Immunoscore, mean±SD*	7.03±20.853
Negative by Allred system	86 (51.5)
Positive by Allred system	81 (48.5)
Immunoscore of PD-L1 in TILs	
Immunoscore, mean±SD	15.38±23.135
Low	116 (69.5)
High	51 (30.5)
Total immunoscore of PD-L1 in both tumour cells and TILs	
Immunoscore, mean±SD	22.41±35.921
Low	114 (68.3)
High	53 (31.7)
Tumour type according to Teng's classification	
Type I	28 (16.8)
Type II	82 (49.1)
Type III	53 (31.7)
Type IV	4 (2.4)

*SD, standard deviation

Supplementary Table 3. Correlation of PD-L1 expression in tumour cells and TILs*

	PD-L1 expression in tumour cells		p-value
	by Allred scoring system		
	Negative	Positive	
	(Number (%))	(Number (%))	
PD-L1 expression level in TILs			<0.001
Low	78 (90.7)	38 (46.9)	
High	8 (9.3)	43 (53.1)	

*The Pearson's Chi-square test was used.

Supplementary Table 4. Disease-free survival based on various clinicopathologic parameters in HR-/HER2+ breast cancers*

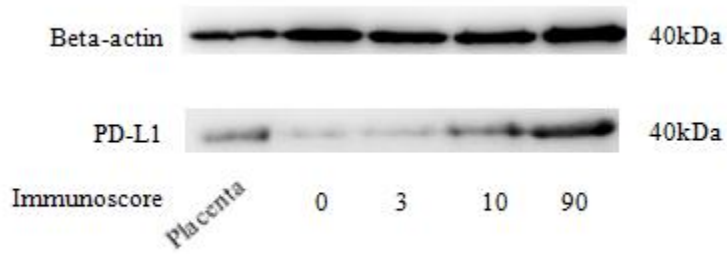
	Univariate analysis			Multivariate analysis		
	HR**	95% CI***	<i>p</i> -value	HR	95% CI	<i>p</i> -value
Stage (I,II vs III, IV)	15.453	3.370-70.849	<i>P</i> <0.001	9.760	2.152-44.263	<i>P</i> =0.013
T stage (1,2 vs 3,4)	6.091	1.955-18.979	<i>P</i> =0.002	1.626	0.566-4.671	<i>P</i> =0.449
Lymph node metastasis	63.050	0.605-6570.270	<i>P</i> =0.080			
Lymphovascular invasion	6.774	1.482-30.956	<i>P</i> =0.014	1.692	0.395-7.245	<i>P</i> =0.552
TILs (0-60% vs >60%)	0.027	0.000-4.536	<i>P</i> =0.167			
PD-L1	0.277	0.075-1.022	<i>P</i> =0.054	0.336	0.105-1.076	<i>P</i> =0.123

*Cox proportional hazard regression model was used.

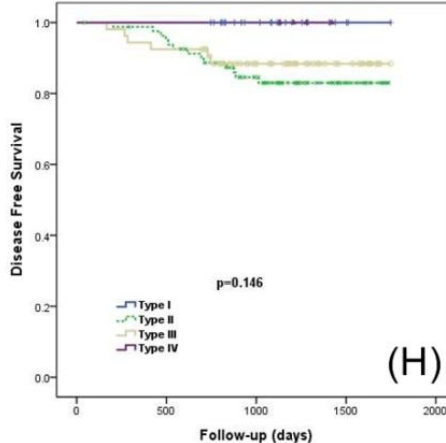
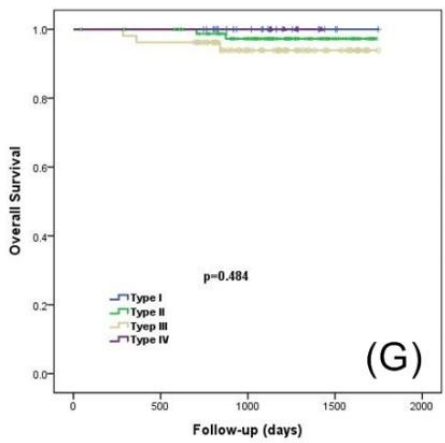
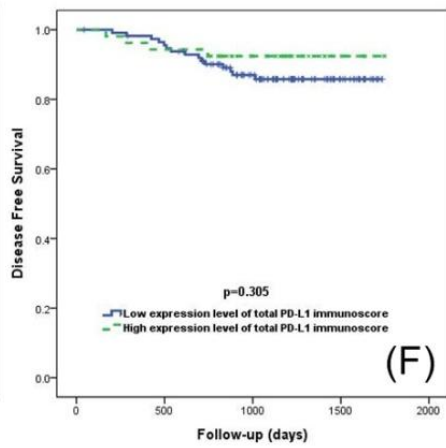
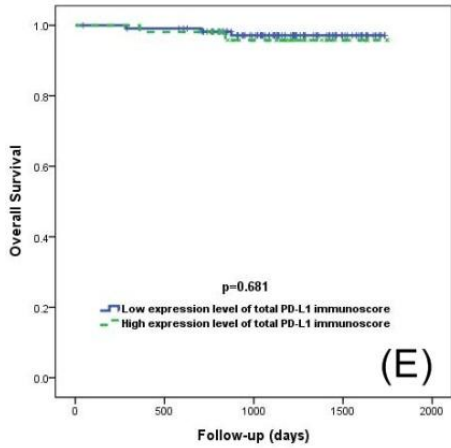
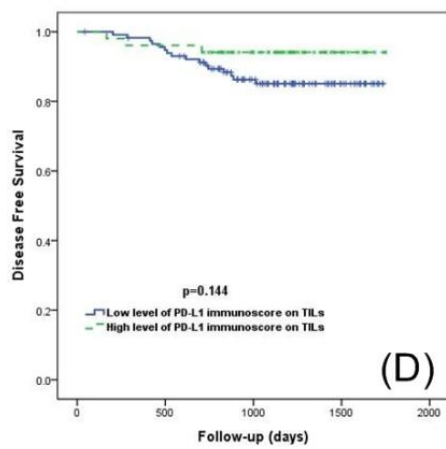
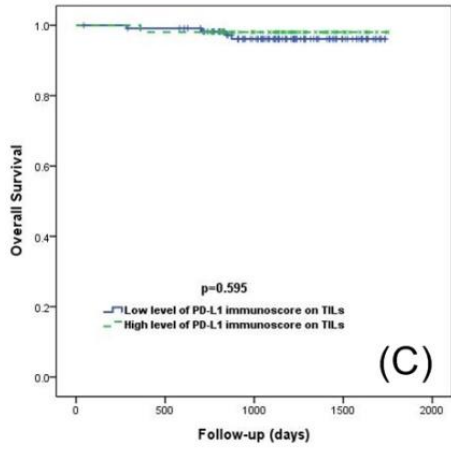
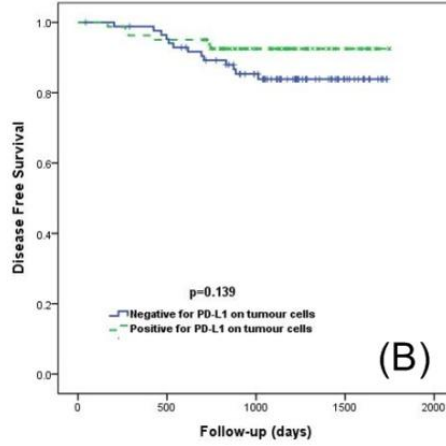
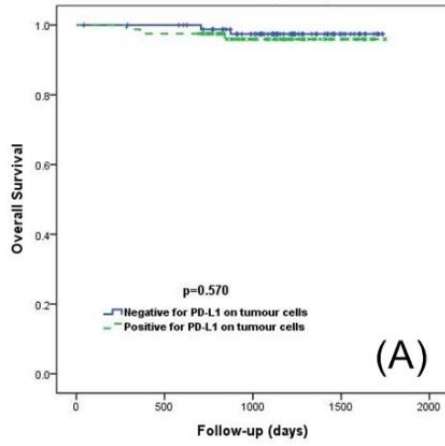
**HR, hazard ratio

***CI, confidence interval

Supplementary Figure 1. Western blot analysis of 4 fresh tissue samples with HER2-positive breast cancers



Supplementary Figure 2. Overall survival and disease-free survival in 167 HER2-positive breast cancers (A) Overall survival according to PD-L1 expression in tumour cells (B) Disease-free survival according to PD-L1 expression in tumour cells (C) Overall survival according to level of PD-L1 immunoscore in TILs (D) Disease-free survival according to level of PD-L1 immunoscore in TILs (E) Overall survival according to level of total PD-L1 immunoscore (F) Disease-free survival according to level of total PD-L1 immunoscore (G) Overall survival according to tumour types (H) Disease-free survival according to tumour types



Supplementary Figure 3. Overall survival and disease-free survival in HR+/HER2+ breast cancers (A) Overall survival according to PD-L1 expression in tumour cells (B) Disease-free survival according to PD-L1 expression in tumour cells (C) Overall survival according to level of PD-L1 immunoscore in TILs (D) Disease-free survival according to level of PD-L1 immunoscore in TILs (E) Overall survival according to level of total PD-L1 immunoscore (F) Disease-free survival according to level of total PD-L1 immunoscore (G) Overall survival according to tumour types (H) Disease-free survival according to tumour types

