

Src Homology 2 Domain Containing Phosphotyrosine Phosphatase 2 (Shp2) Controls Surface GluA1 in Synaptic Homeostasis

Bin Zhang, Wen Lu

Figure S1

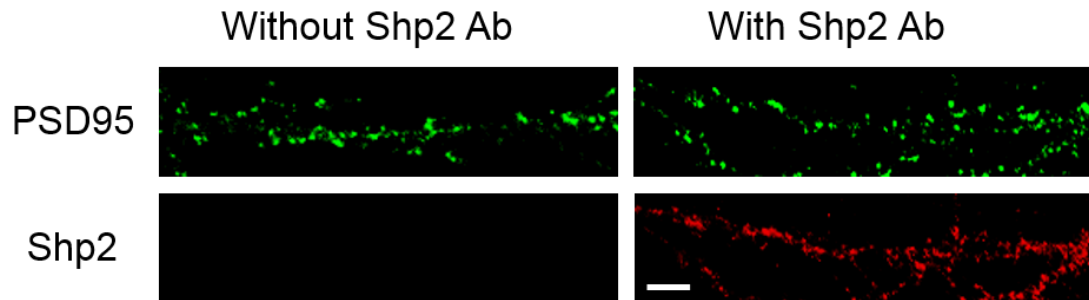


Figure S1. The secondary antibody control experiment. Cultured hippocampal neurons were firstly labeled with PSD95 antibody and with or without Shp2 antibody, then with appropriate secondary antibodies (for Shp2, donkey anti-rabbit Alexa-488-conjugated, A21206, Invitrogen, 1:500; for PSD95, Goat anti-mouse Alexa-546-conjugated, A11030, Invitrogen, 1:500). When labeled without Shp2 antibody, no signal was detected ($n = 10$ cells). The experiment was performed for 3 independent cultures. Scale bar represents 5 μm . Ab = antibody.