

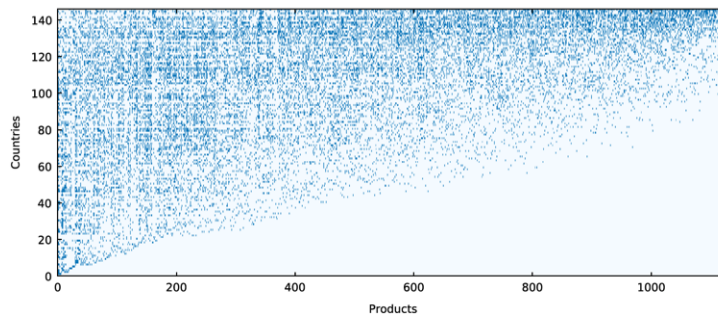
# Economic development and wage inequality: a Complex System Analysis –S3 Appendix

Angelica Sbardella<sup>1,3</sup>, Emanuele Pugliese<sup>2</sup>, Luciano Pietronero<sup>1,2</sup>

- 1 ISC-CNR – Institute of Complex Systems, Rome, Italy
- 2 Department of Physics, Sapienza Università di Roma, Rome, Italy
- 3 Faculty of Economics, Università degli Studi di Roma Tor Vergata, Rome, Italy

## Color-blind Friendly Figures

The chromatic choice of the paper, which plays with a red-green contrast, is thought to visualize at a first glance the contrast between high (red) and low (green) inequality. However, we are aware that a red-green palette may undermine the possibility of decoding exactly the information displayed in the figures. This Appendix offers a more accessible palette, in which all the figures of the paper and S1 Appendix are reproduced. The figure numbering is the same of the paper and S1 Appendix; captions can be easily understood by reading blue instead of green.



**Figure S3 1.** Fig 1 of the paper in a red-blue palette.

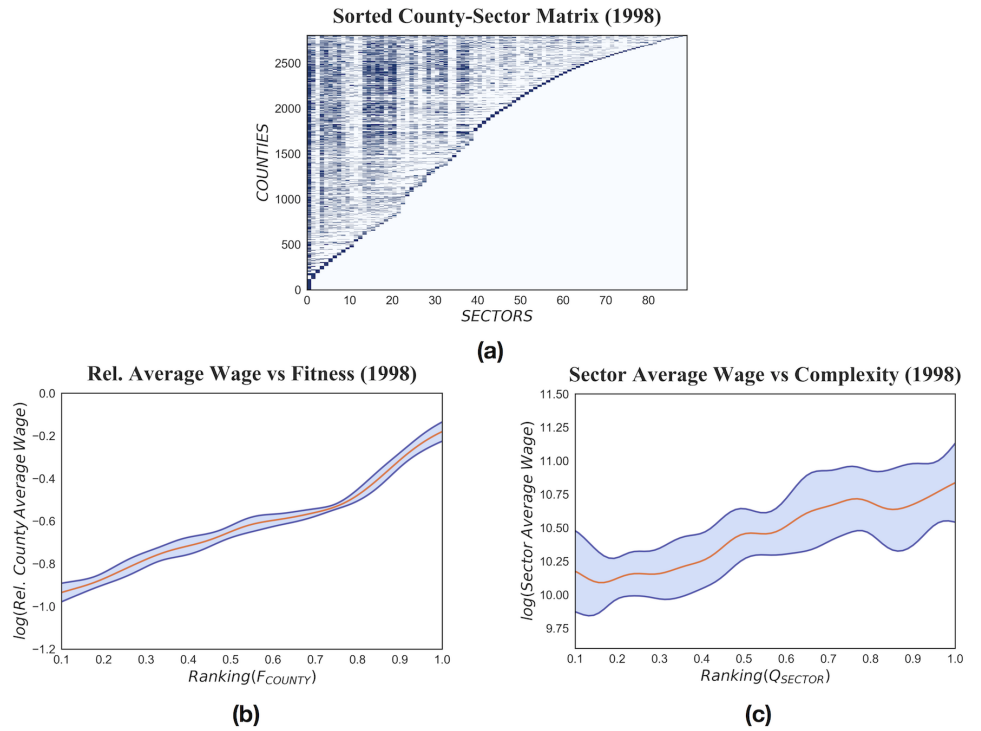


Figure S3 2. Fig 2 of the paper in a red-blue palette.

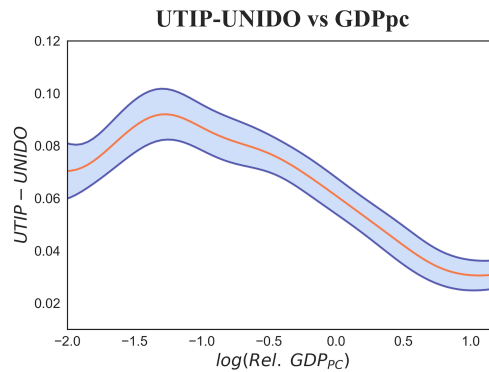


Figure S3 3. Fig 3 of the paper in a red-blue palette.

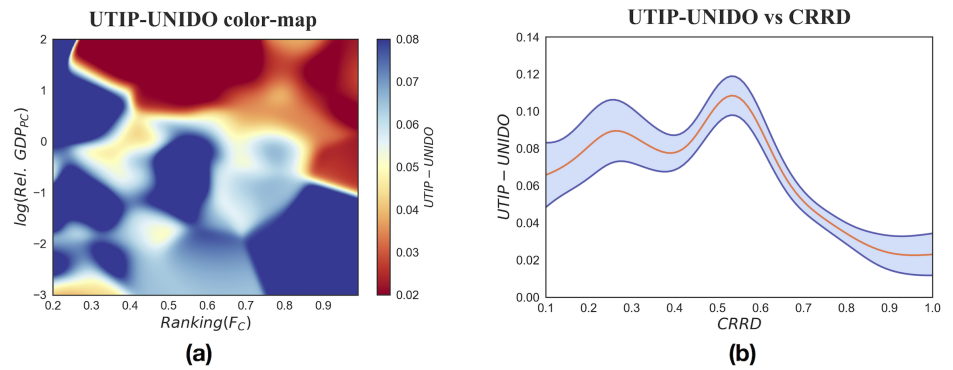


Figure S3 4. Fig 4 of the paper in a red-blue palette.

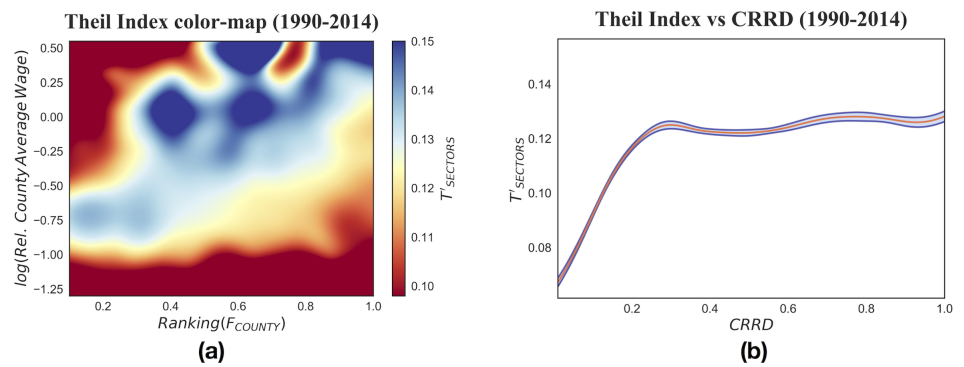


Figure S3 5. Fig 5 of the paper in a red-blue palette.

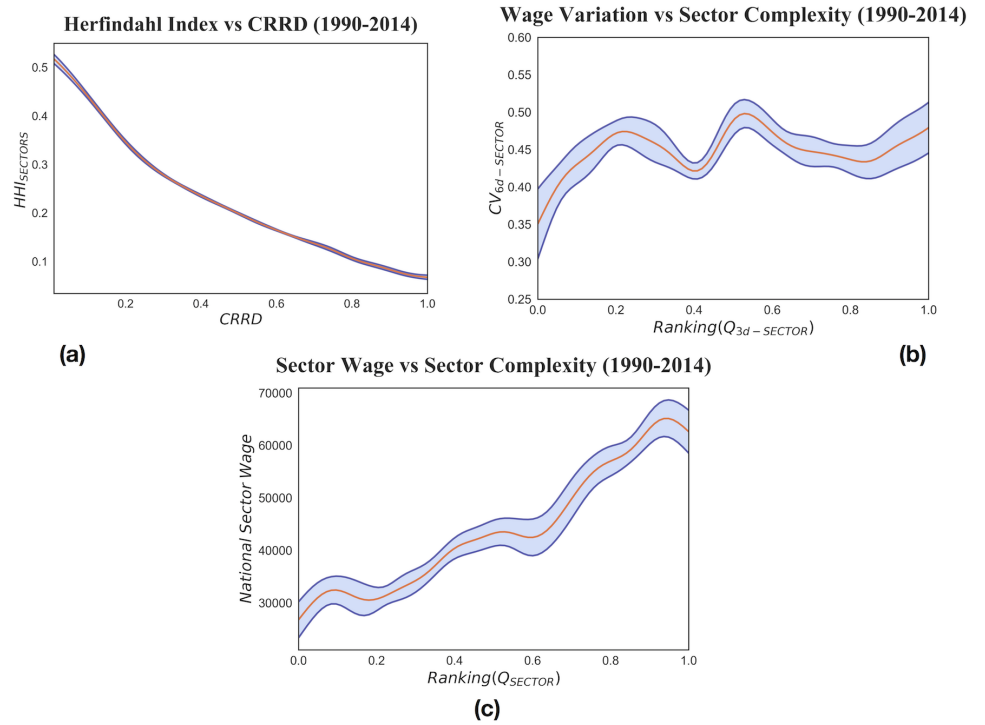


Figure S3 6. Fig 6 of the paper in a red-blue palette.

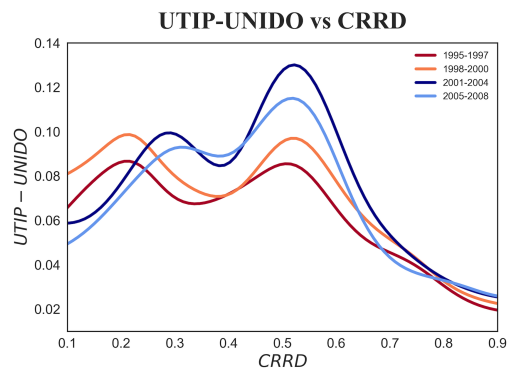


Figure S3 7. Fig 7 of the paper in a red-blue palette.

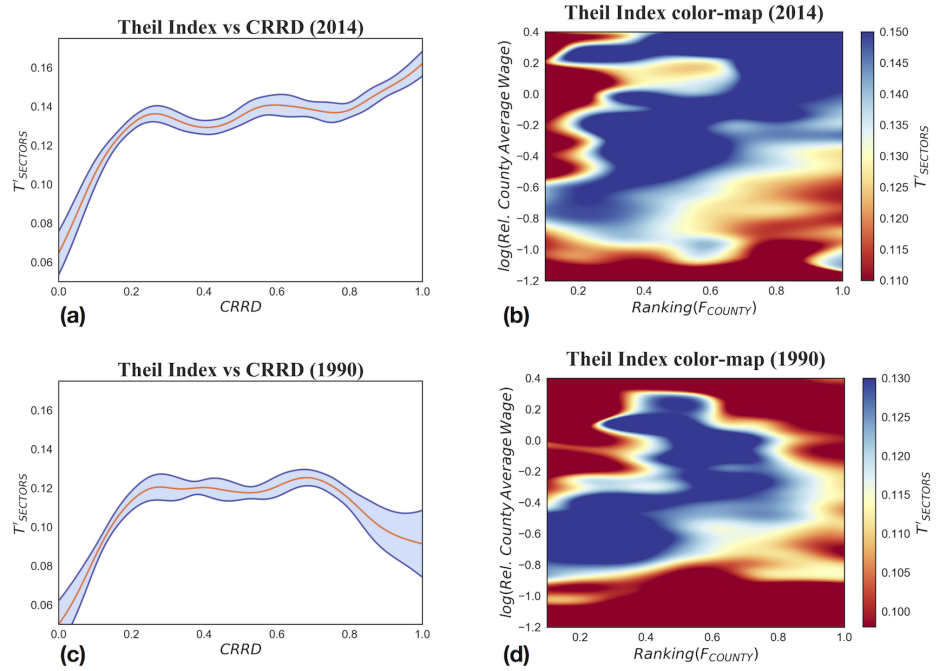


Figure S3 8. Fig 8 of the paper in a red-blue palette.

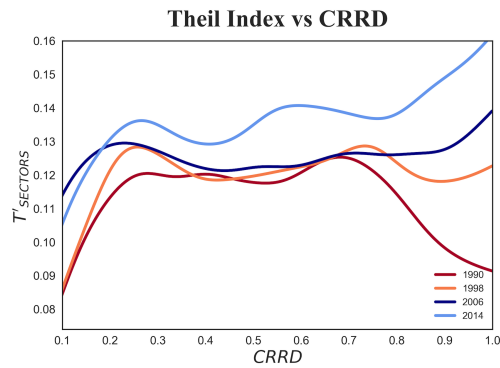


Figure S3 9. Fig 9 of the paper in a red-blue palette.

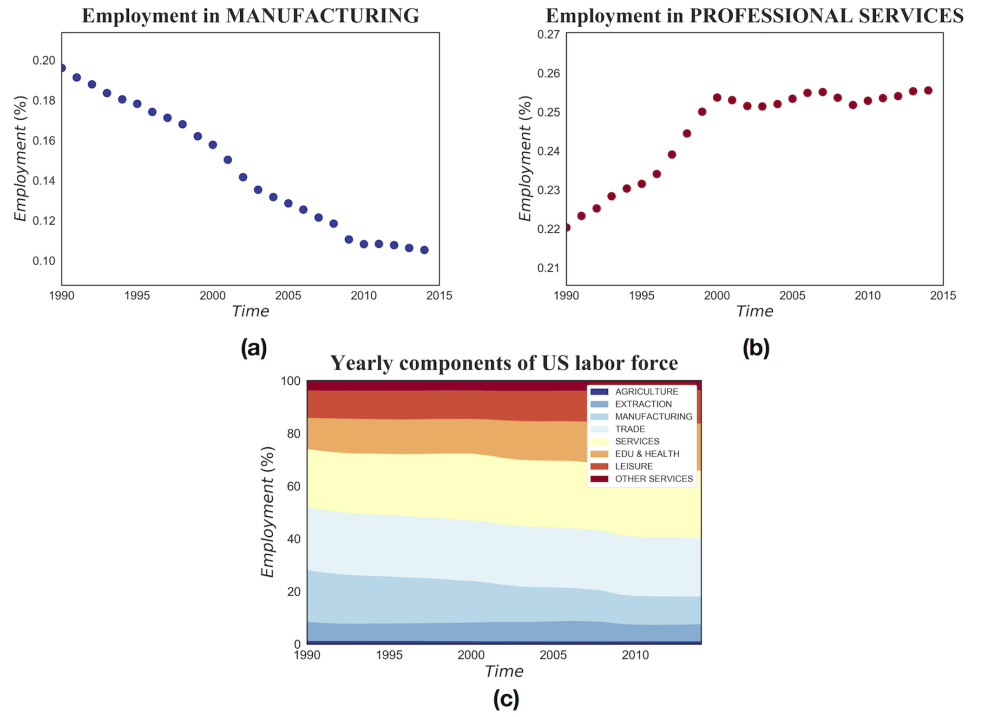


Figure S3 10. Fig 10 of the paper in a red-blue palette.

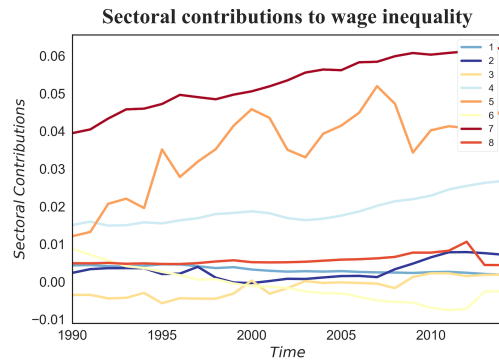


Figure S3 11. Fig 11 of the paper in a red-blue palette.

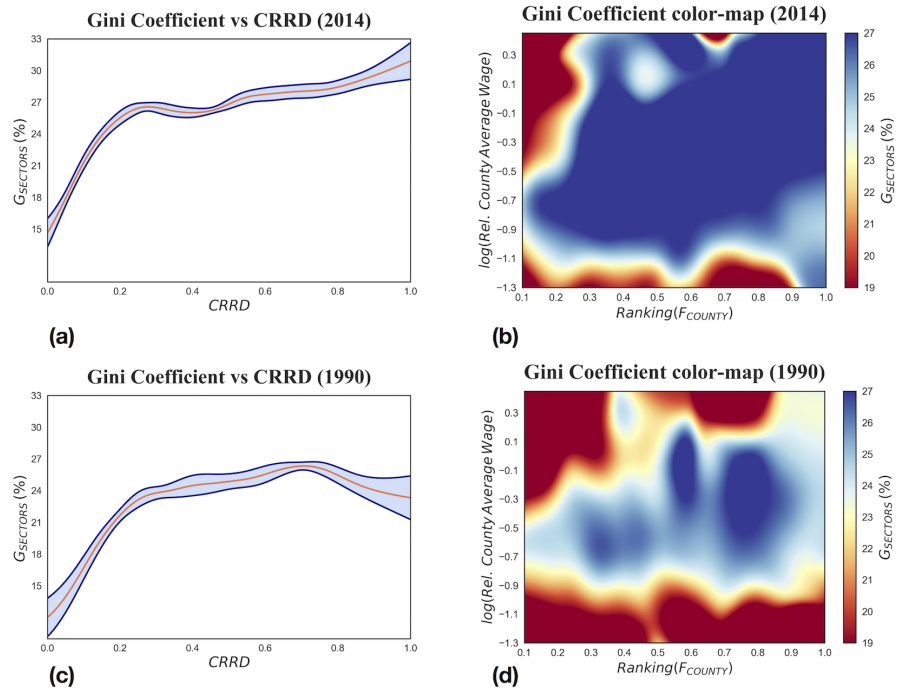


Figure S3 1. Figure S1 1 of S1 Appendix in a red-blue palette.

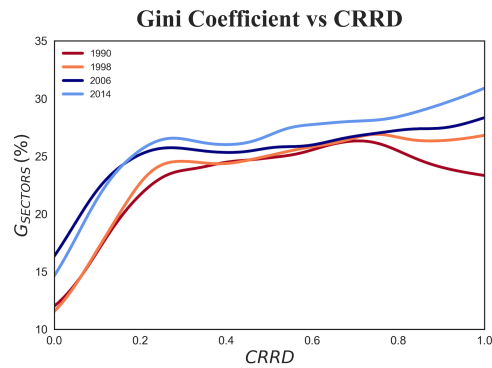


Figure S3 2. Figure S1 2 of S1 Appendix in a red-blue palette.