

Polymorphisms in *MICA*, but not in *DEPDC5*, *HCP5* or *PNPLA3*, are associated with chronic hepatitis C-related hepatocellular carcinoma

Hoang Hai, Akihiro Tamori*, Le Thi Thanh Thuy, Kanako Yoshida, Atsushi Hagihara, Etsushi Kawamura, Sawako Uchida-Kobayashi, Hiroyasu Morikawa, Masaru Enomoto, Yoshiki Murakami, Norifumi Kawada

Department of Hepatology, Osaka City University Graduate School of Medicine, Osaka, Japan

***Corresponding author**

Akihiro Tamori, MD & PhD

Department of Hepatology, Osaka City University Graduate School of Medicine
1-4-3, Asahimachi, Abenoku, Osaka 545-8585, Japan.

Tel: +81-6-6645-3905

Fax: +81-6-6646-1433

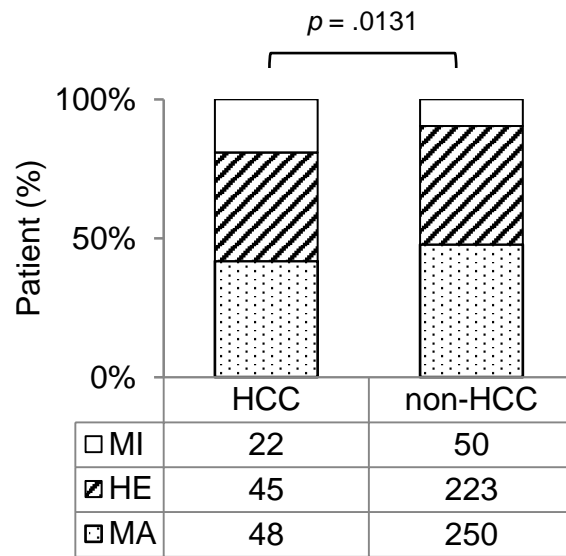
E-mail: atamori@med.osaka-cu.ac.jp

Supplementary Table S1. Clinical characteristics of patients in the validation cohort

Parameter	HCC (n = 115)	Non-HCC (n = 523)	<i>p</i> -value
Age (years)	70 ± 8	60 ± 13	<0.0001
Sex (female/male)	42/73	288/235	0.0004
HCV viral load (log copies/mL)	6.0 ± 0.8	6.0 ± 1.0	0.5151
CH/LC	47/62	479/44	<0.0001
AST (IU/L)	73 ± 49	56 ± 56	<0.0001
ALT (IU/L)	58 ± 36	58 ± 59	0.0192
Platelets (×10 ⁴ /μL)	11.5 ± 5.0	17.9 ± 7.1	<0.0001
Albumin (g/dL)	4.2 ± 6.9	4.2 ± 3.1	<0.0001
PT%	84 ± 15	95 ± 18	<0.0001
AFP (ng/mL)	2770 ± 14985	25 ± 284	<0.0001
PIVKA-II (mAU/mL)	3062 ± 21595	595 ± 7445	<0.0001
<i>IL28B</i> rs8099917 (TT/TG/GG)	82/31/1	360/143/8	0.5770
<i>ITPA</i> rs1127354 (CC/CA/AA)	59/31/3	315/105/4	0.1139

Supplementary Table S2. Characteristics of patients available for sMICA level

Parameter	All patients (n = 36)	HCC (n = 18)	Non-HCC (n = 18)
Age (years)	61 ± 11	63 ± 9	59 ± 13
Gender (female/male)	15/21	2/16	13/5
CH/LC	18/18	9/9	9/9
HCV RNA (log copies/mL)	5.9 ± 1.4	6.2 ± 1.4	5.7 ± 1.4
AST (IU/L)	64.1 ± 63.3	74.4 ± 70.7	53.9 ± 53.0
ALT (IU/L)	58.2 ± 48.5	64.7 ± 34.3	51.6 ± 58.7
Plt (×10 ⁴ /μL)	13.1 ± 5.4	12.0 ± 4.0	14.3 ± 6.3
Alb (g/dL)	4.1 ± 0.5	4.0 ± 0.5	4.2 ± 0.5
PT%	95.8 ± 21.8	93.3 ± 20.7	99.0 ± 22.9
AFP (ng/mL)	50.1 ± 101.4	80.9 ± 128.4	15.4 ± 32.5
PIVKA- II (mAU/mL)	1060.2 ± 4622.0	1864.8 ± 6041.4	25.8 ± 21.2
<i>MICA</i> genotype (MA/HE/MI)	12/12/12	6/6/6	6/6/6



Supplementary Figure S1. Genotypes of *MICA* in CHC patients with or without HCC in the validation cohort. The vertical axis shows the percentage of each genotype, and the data table shows the number of samples tested in each group.