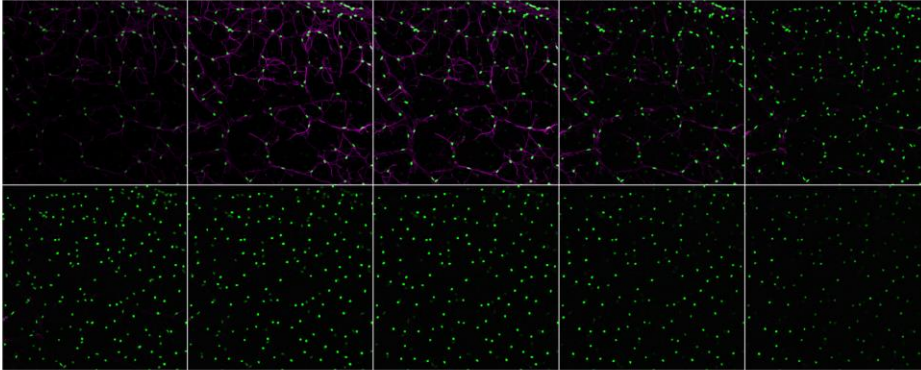


## Supplemental Figure 1

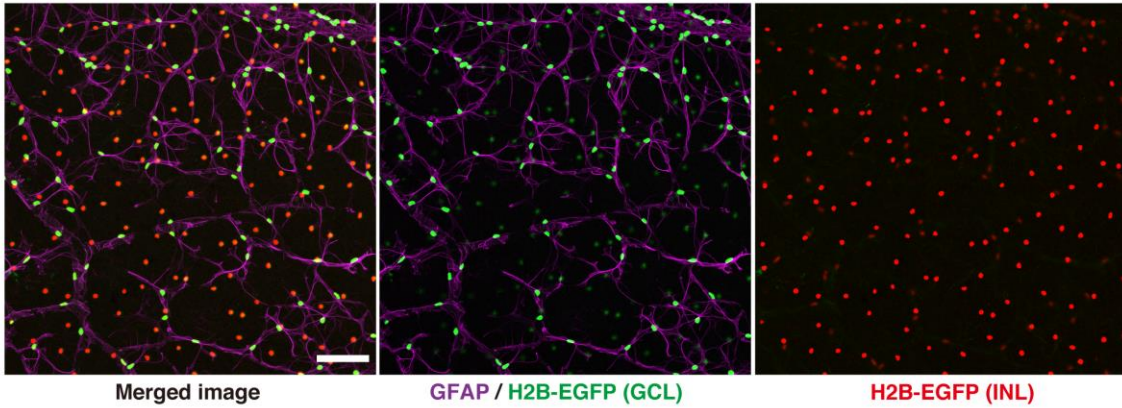
A

Montage image (GFAP / H2B-EGFP) 708  $\mu\text{m}$ (x), 708  $\mu\text{m}$ (y), 2  $\mu\text{m}$  (z)

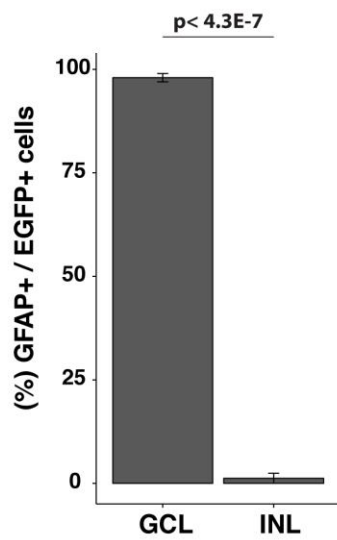


B

Projected image 1 (slice 1 ~ slice 4)    Projected image 2 (slice 5 ~ slice 10)



C



**Supplemental Figure 1.** Co-localization of EGFP fluorescence with a glial marker in the GCL. Whole mount retina from one month-old  $\alpha^{\text{GFP/+}}$  mouse was stained with antibodies against GFAP. (A) Serial confocal images of whole mount retina at different depth. (B) Merged images of all analyzed slices and slices corresponding to the GCL and INL. H2B-EGFP cells in the GCL and INL were pseudo-colored by green and red, respectively. Scale bars: 100  $\mu\text{m}$ . (C) Quantification of data shown in (B).