

Supplementary information

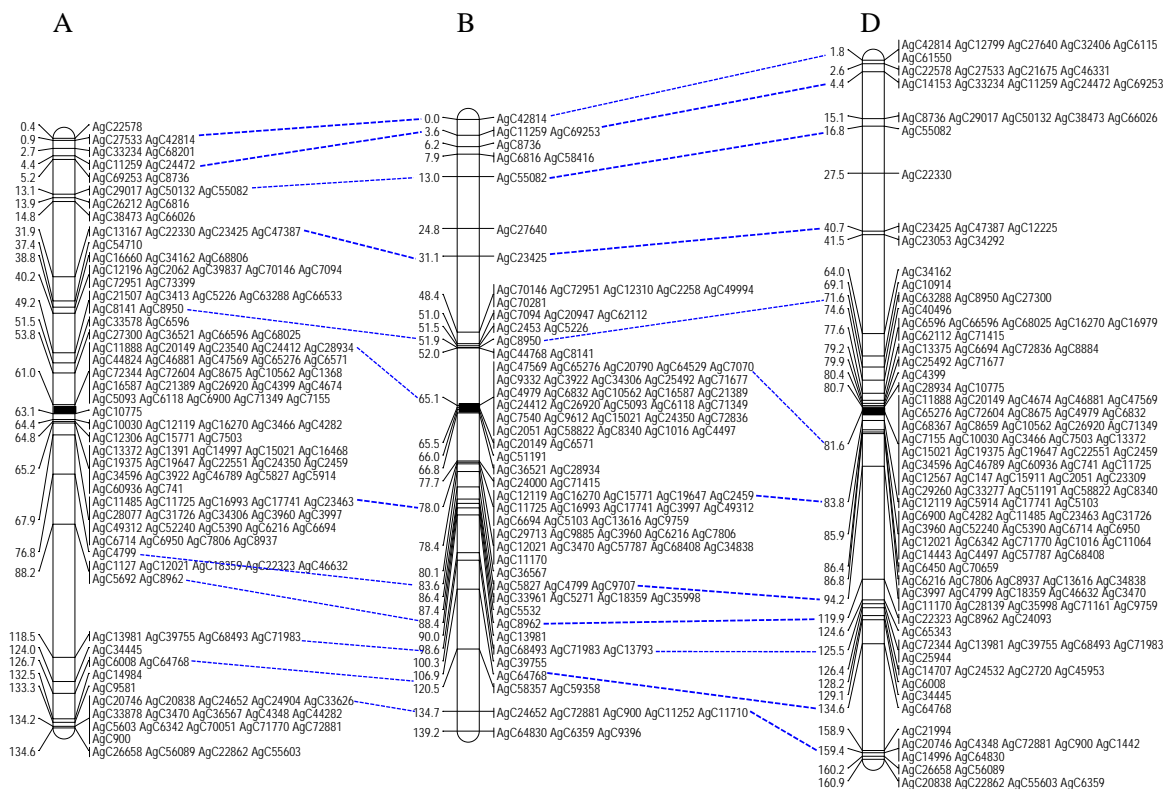
A resource of large-scale molecular markers for monitoring *Agropyron cristatum* chromatin introgression in wheat background based on transcriptome sequences

Jinpeng Zhang¹, Weihua Liu¹, Yuqing Lu¹, Qunxing Liu¹, Xinming Yang¹, Xiuquan Li¹, Lihui Li^{1*}

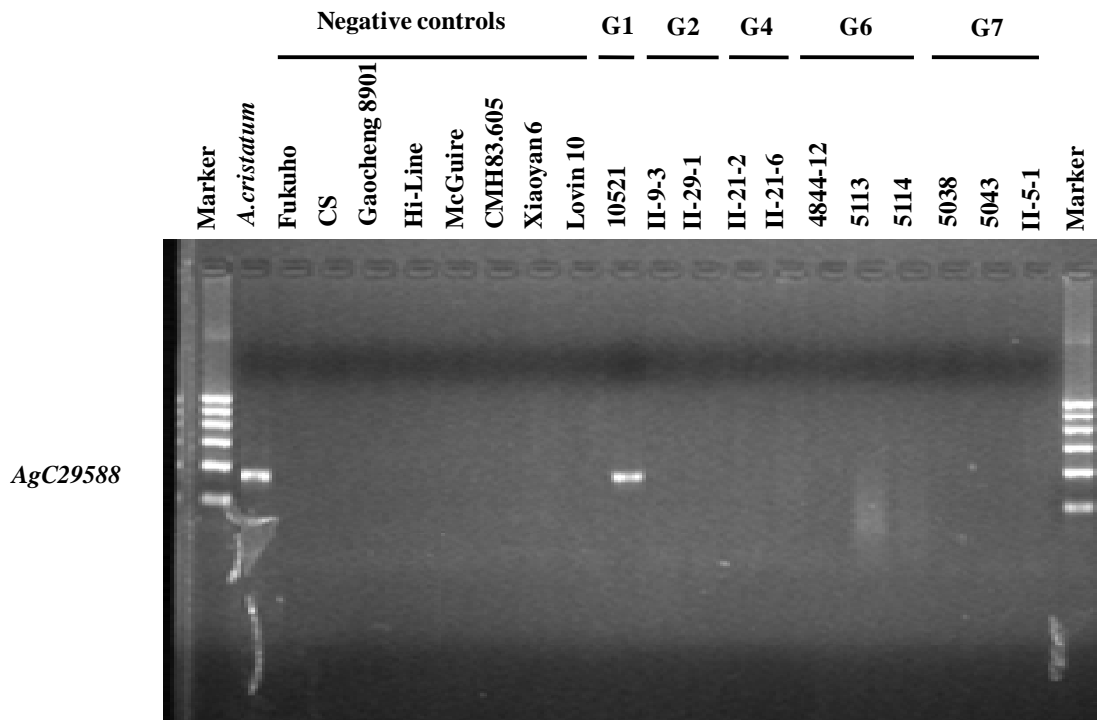
Affiliation

¹Institute of Crop Science, Chinese Academy of Agricultural Sciences, Beijing, 100081, China

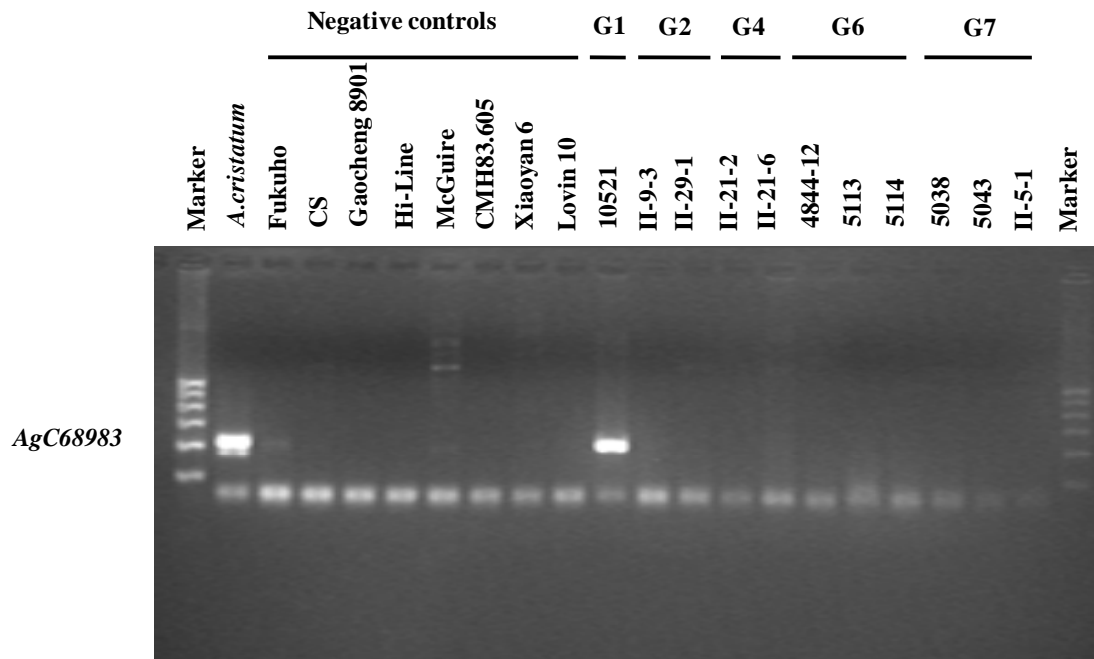
*Corresponding author: Email: lilihui@caas.cn, Fax: +86-10-62189650



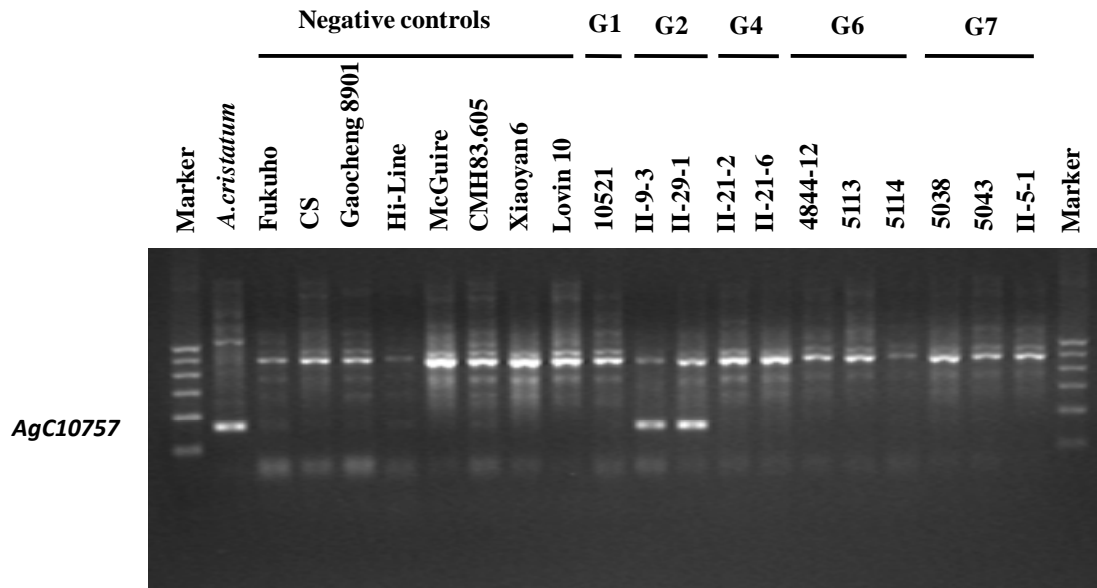
Supplementary Figure 1. A virtual chromosome location map was constructed by anchoring 680 *A. cristatum* 6P-specific EST-STS markers on 6A(A), 6B(B) and 6D(D) chromosomes of wheat POPSEQ genetic map.



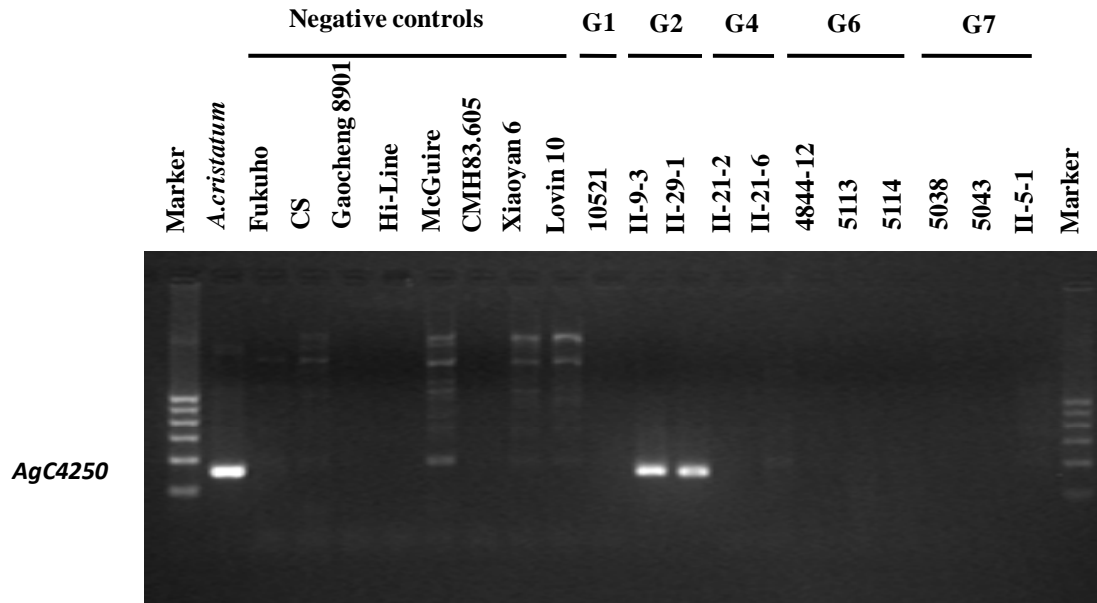
Supplementary Figure 2. The full-length gels of EST-STS markers AgC29588 specific for *A. cristatum* addition lines in wheat genetic backgrounds. The amplification product of EST-STS markers were run on 2% agarose gel. G1, G2, G4, G6, and G7 indicate the homologous groups of alien chromosomes of *A. cristatum*.



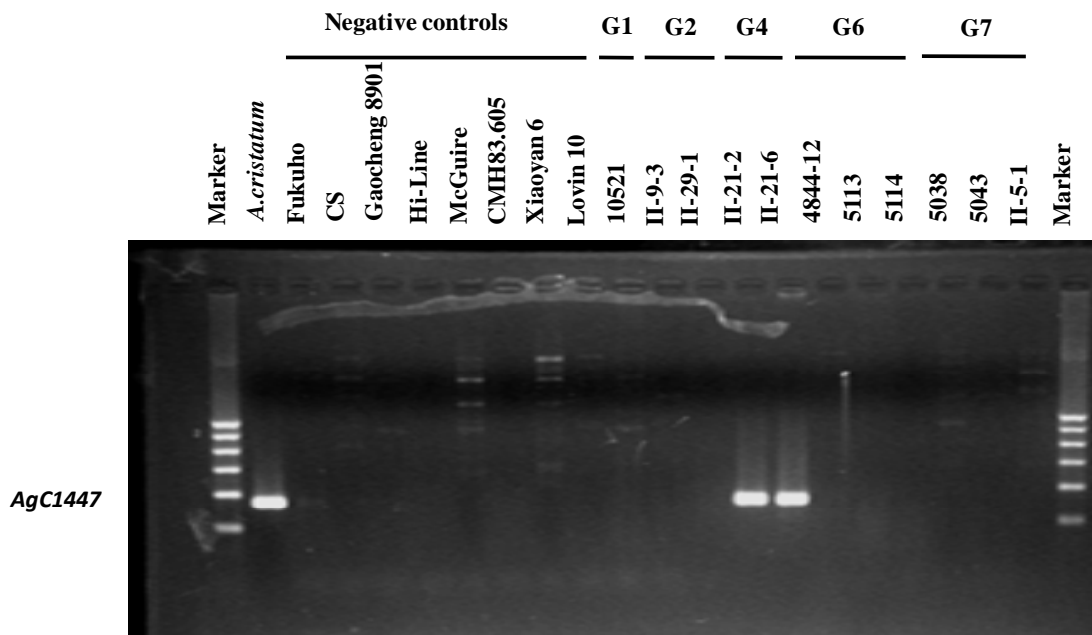
Supplementary Figure 3. The full-length gels of EST-STS markers *AgC68983* specific for *A. cristatum* addition lines in wheat genetic backgrounds. The amplification product of EST-STS markers were run on 2% agarose gel. G1, G2, G4, G6, and G7 indicate the homologous groups of alien chromosomes of *A. cristatum*.



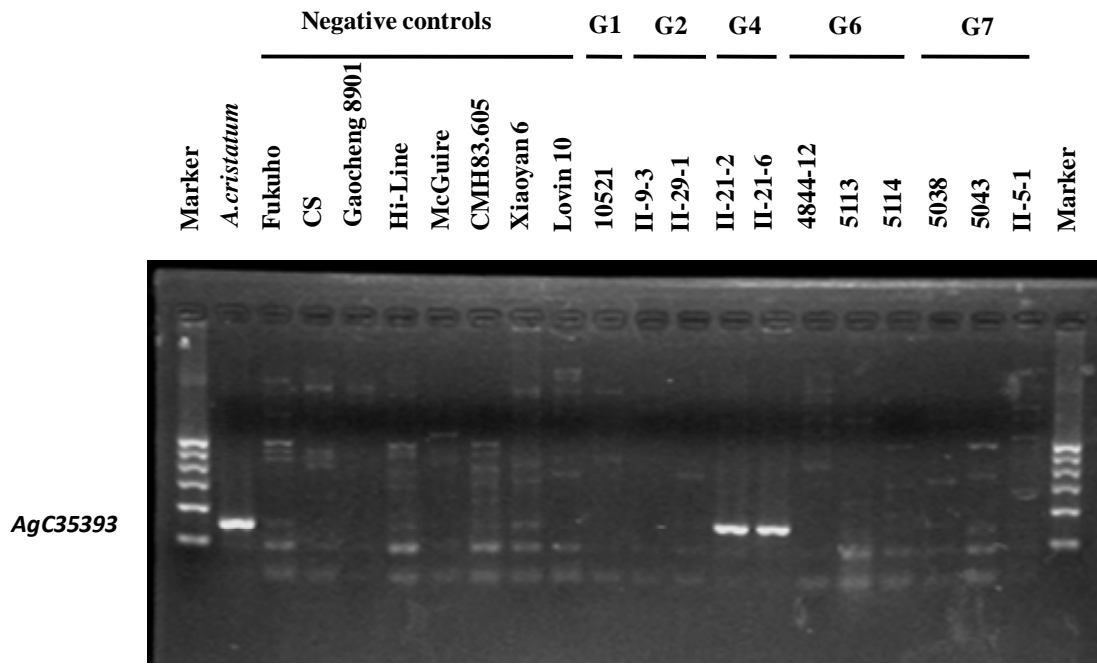
Supplementary Figure 4. The full-length gels of EST-STS markers AgC10757 specific for *A. cristatum* addition lines in wheat genetic backgrounds. The amplification product of EST-STS markers were run on 2% agarose gel. G1, G2, G4, G6, and G7 indicate the homologous groups of alien chromosomes of *A. cristatum*.



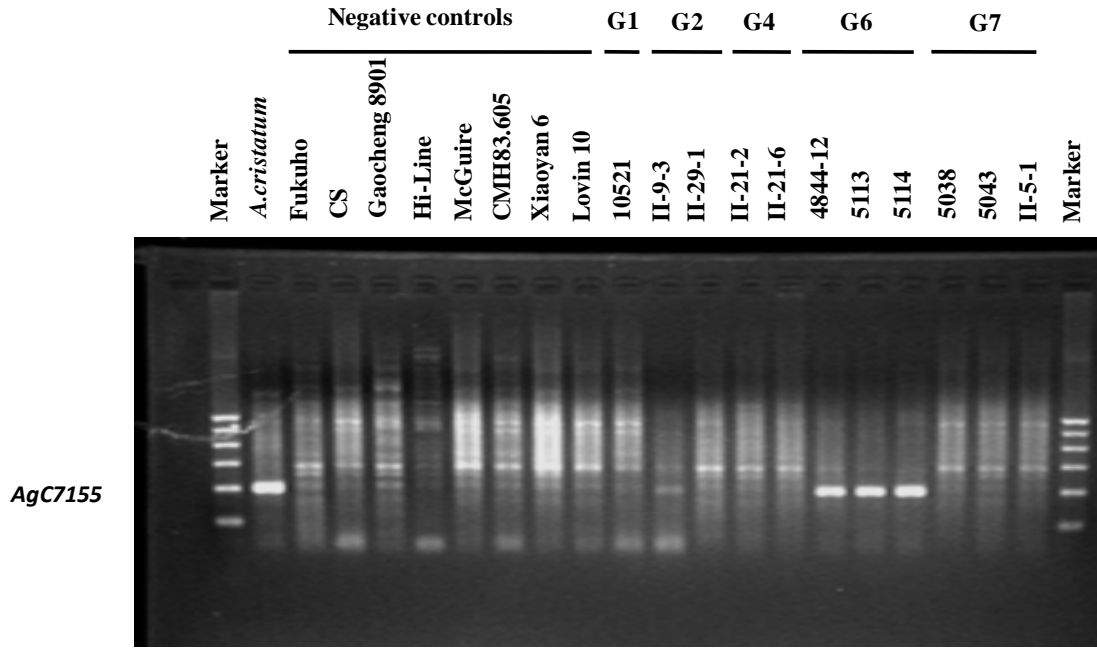
Supplementary Figure 5. The full-length gels of EST-STS markers AgC4250 specific for *A. cristatum* addition lines in wheat genetic backgrounds. The amplification product of EST-STS markers were run on 2% agarose gel. G1, G2, G4, G6, and G7 indicate the homologous groups of alien chromosomes of *A. cristatum*.



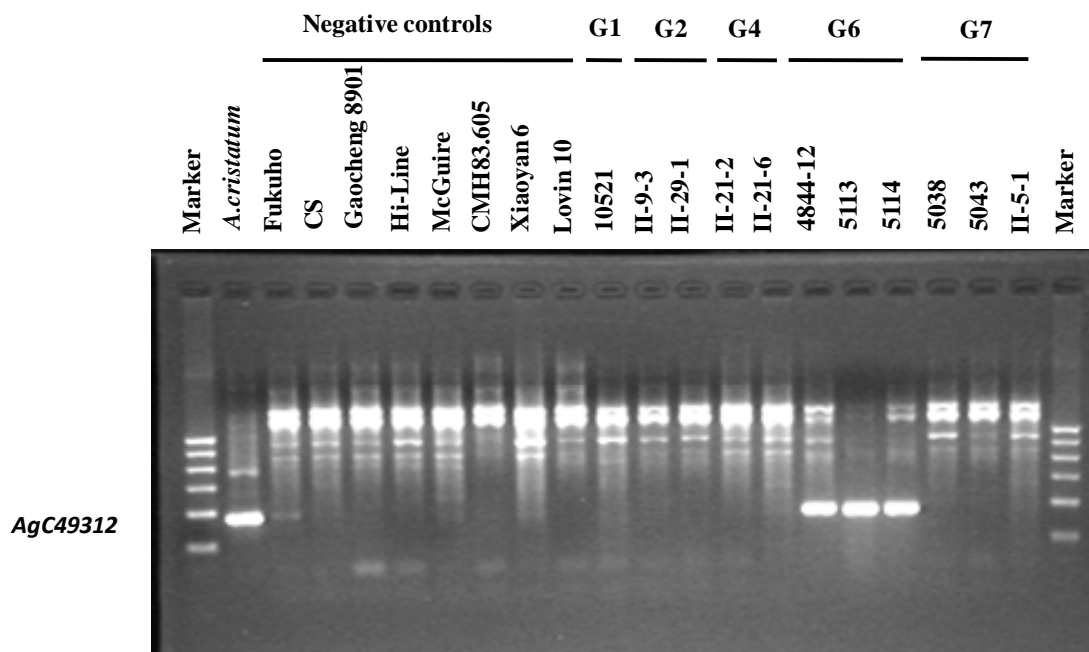
Supplementary Figure 6. The full-length gels of EST-STS markers AgC1447 specific for *A. cristatum* addition lines in wheat genetic backgrounds. The amplification product of EST-STS markers were run on 2% agarose gel. G1, G2, G4, G6, and G7 indicate the homologous groups of alien chromosomes of *A. cristatum*.



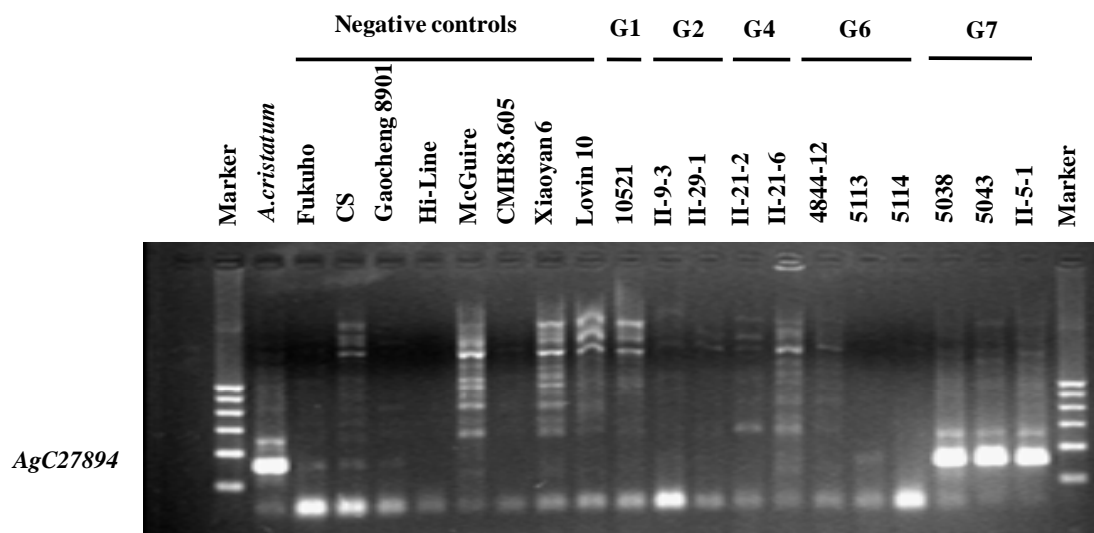
Supplementary Figure 7. The full-length gels of EST-STS markers AgC35393 specific for *A. cristatum* addition lines in wheat genetic backgrounds. The amplification product of EST-STS markers were run on 2% agarose gel. G1, G2, G4, G6, and G7 indicate the homologous groups of alien chromosomes of *A. cristatum*.



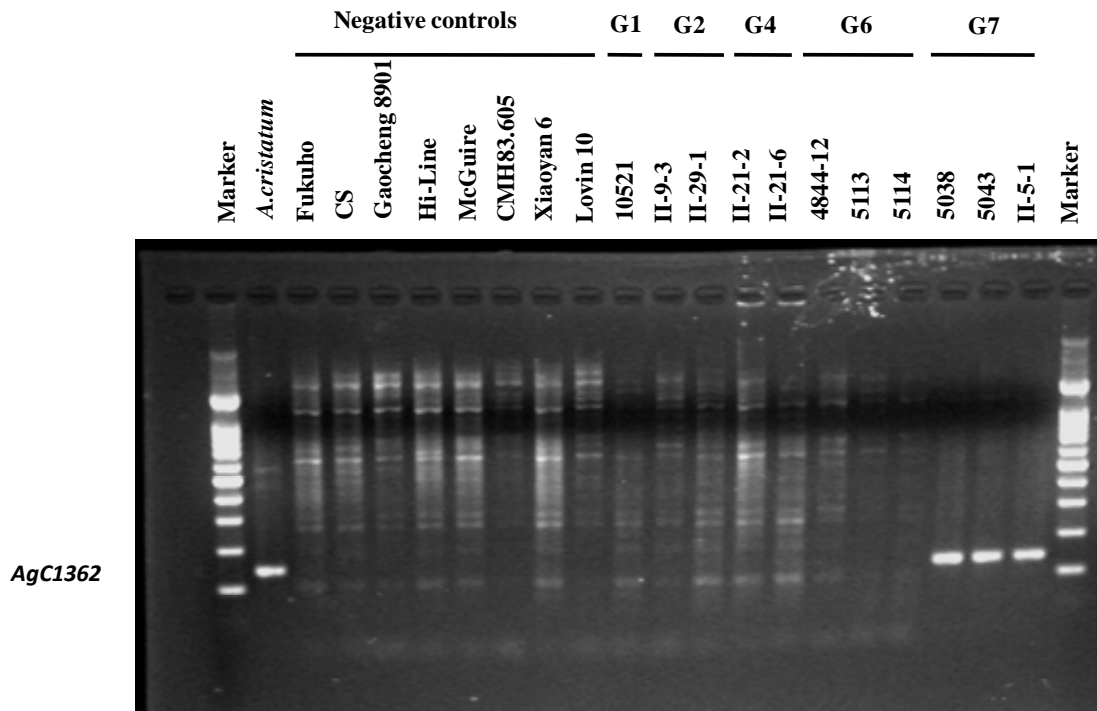
Supplementary Figure 8. The full-length gels of EST-STS markers AgC7155 specific for *A. cristatum* addition lines in wheat genetic backgrounds. The amplification product of EST-STS markers were run on 2% agarose gel. G1, G2, G4, G6, and G7 indicate the homologous groups of alien chromosomes of *A. cristatum*.



Supplementary Figure 9. The full-length gels of EST-STS markers AgC49312 specific for *A. cristatum* addition lines in wheat genetic backgrounds. The amplification product of EST-STS markers were run on 2% agarose gel. G1, G2, G4, G6, and G7 indicate the homologous groups of alien chromosomes of *A. cristatum*.



Supplementary Figure 10. The full-length gels of EST-STS markers *AgC27894* specific for *A. cristatum* addition lines in wheat genetic backgrounds. The amplification product of EST-STS markers were run on 2% agarose gel. G1, G2, G4, G6, and G7 indicate the homologous groups of alien chromosomes of *A. cristatum*.



Supplementary Figure 11. The full-length gels of EST-STS markers AgC1362 specific for *A. cristatum* addition lines in wheat genetic backgrounds. The amplification product of EST-STS markers were run on 2% agarose gel. G1, G2, G4, G6, and G7 indicate the homologous groups of alien chromosomes of *A. cristatum*.