

Title: Evidence that CA3 is Underling the Comorbidity Between Pain and Depression
and the Co-curation by Wu-Tou decoction in Neuropathic Pain

Authors: Chunyan Zhu^{1#}, Qionghong Xu¹, Chao Wang¹, Zhiyun Mao¹, Na Lin^{1*}

Affiliation: 1. Institute of Chinese Materia Medica, China Academy of Chinese
Medical Sciences, Beijing 100700, China;

First author: Chunyan Zhu

*** Corresponding author:** Prof. Na Lin

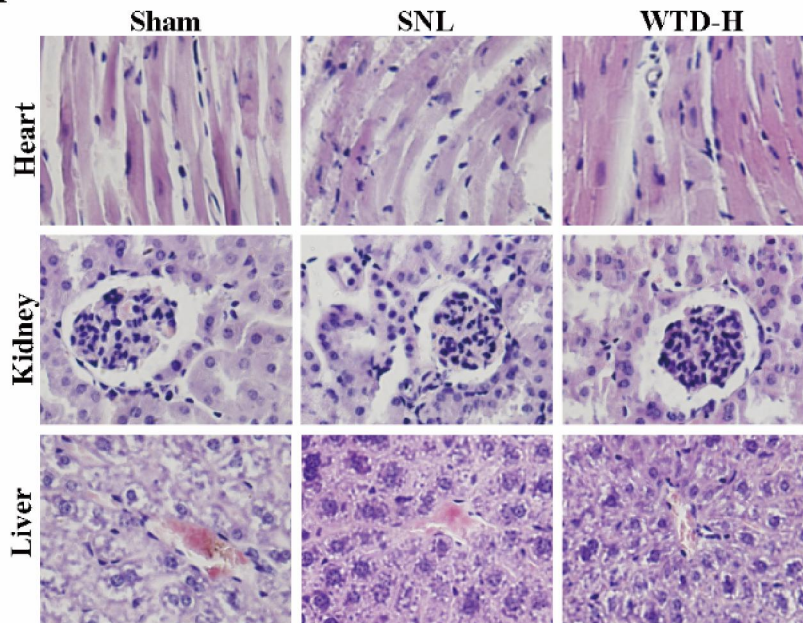
Address correspondence to: Institute of Chinese Materia Medica, China Academy
of Chinese Medical Sciences, No. 16, Nanxiaojie, Dongzhimennei, Beijing 100700,
China.

E-mail: linna888@163.com

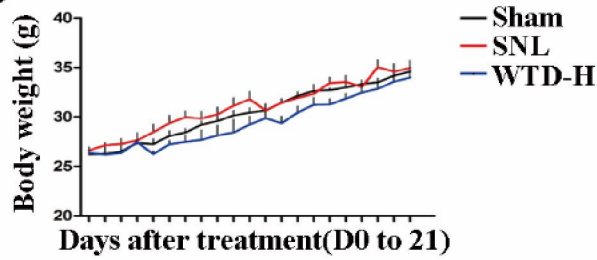
Phone: +861064014411-2869 **Fax:** +861064013996

Supplementary Fig. S1

A



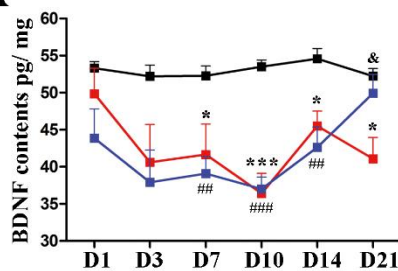
B



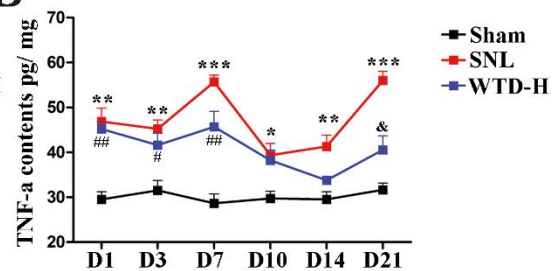
Supplementary Figure 1. The administration of WTD showed no significant injury (A) HE staining on D21 for heart, kidney and liver in Sham, SNL and WTD-H groups. (B) The track record of the body weight from D1 to D21 in Sham, SNL and WTD-H groups.

Supplementary Fig. S2

A



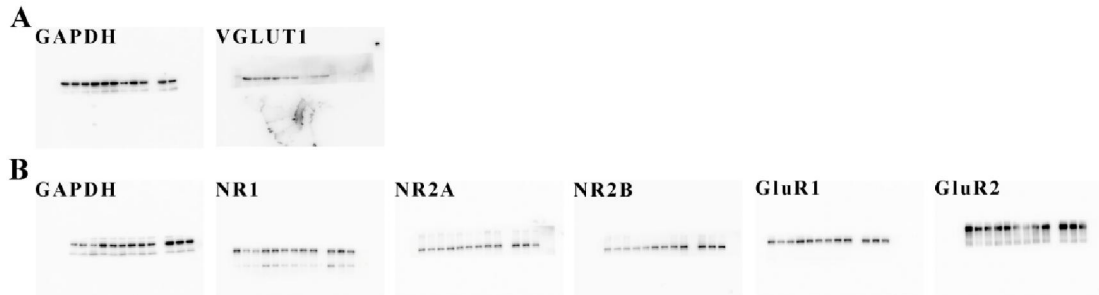
B



Supplementary Figure 2. The ELISA quantification of BDNF(A) and TNF-a (B) in Sham, SNL and WTD-H groups (Mean \pm SEM, at least 6 mice were analyzed in each

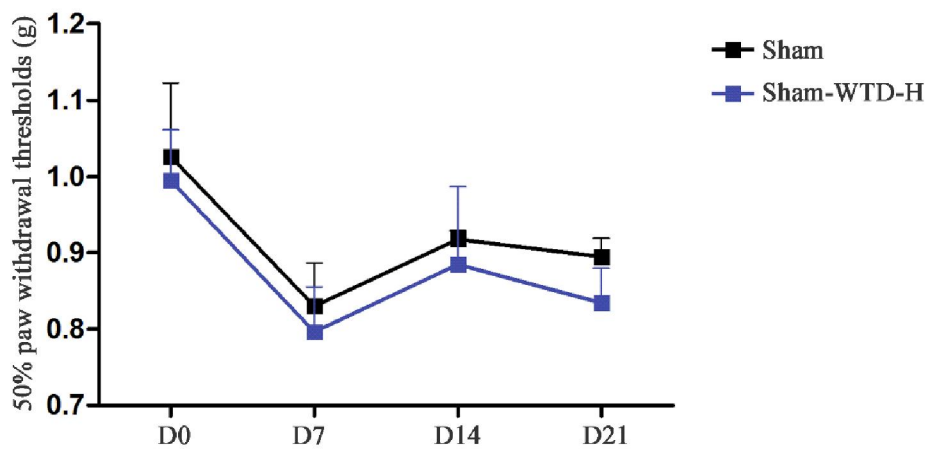
group), in which *denotes the significant difference between Sham and SNL (*P < 0.05, ** P < 0.01, ***P < 0.001), #denotes the significant (#P < 0.05, ##P < 0.01, ###P < 0.001), &denotes the significant(&P < 0.05, &&P < 0.01, &&&P < 0.001)difference between WTD-H and SNL.

Supplementary Fig. S3



Supplementary Figure 3. The original full-length figures for gels shown in Fig. 4B(A) and 4C(B).

Supplementary Fig. S4



Supplementary Figure 4. The specificity of WTD. Grouped data (Mean \pm S.E.M, n=8 per group) show no difference in pain thresholds between Sham and Shamed ones administrated with WTD-H for 21days.