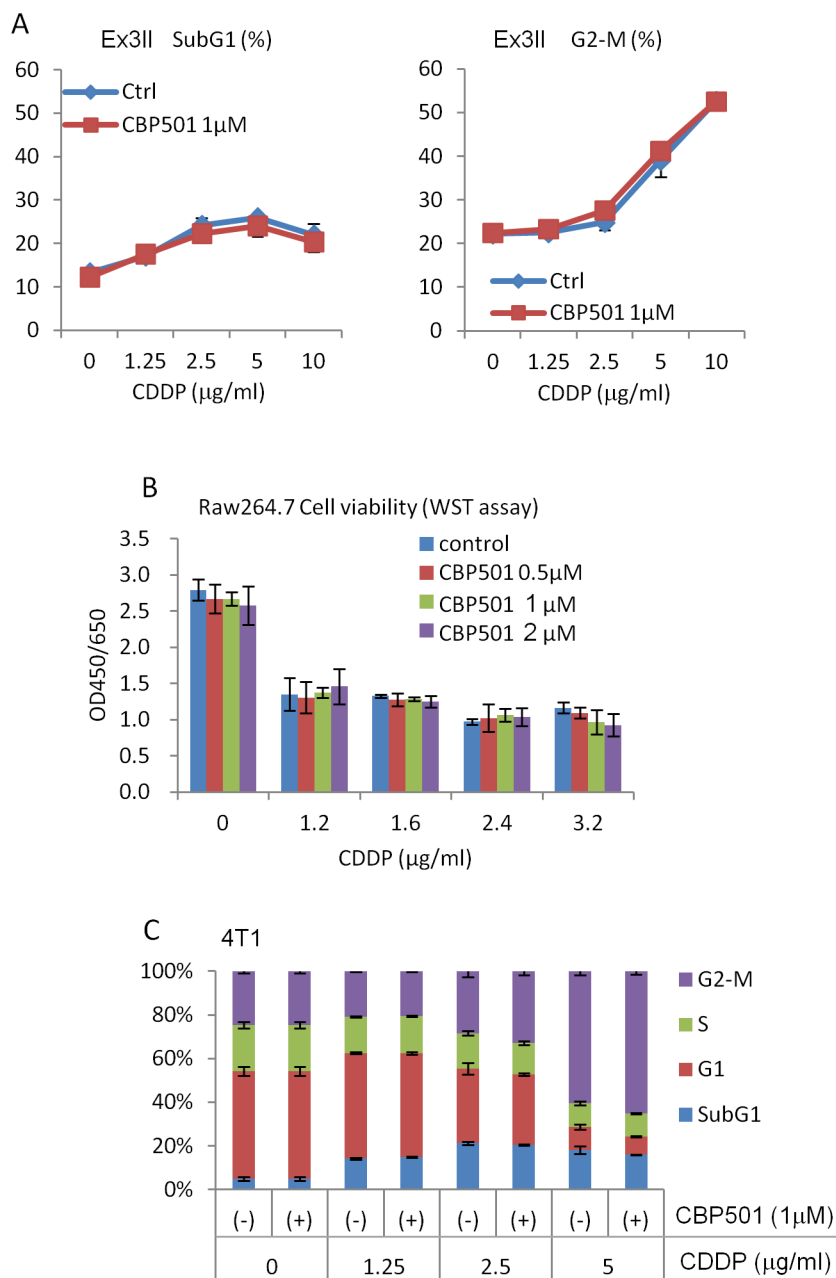
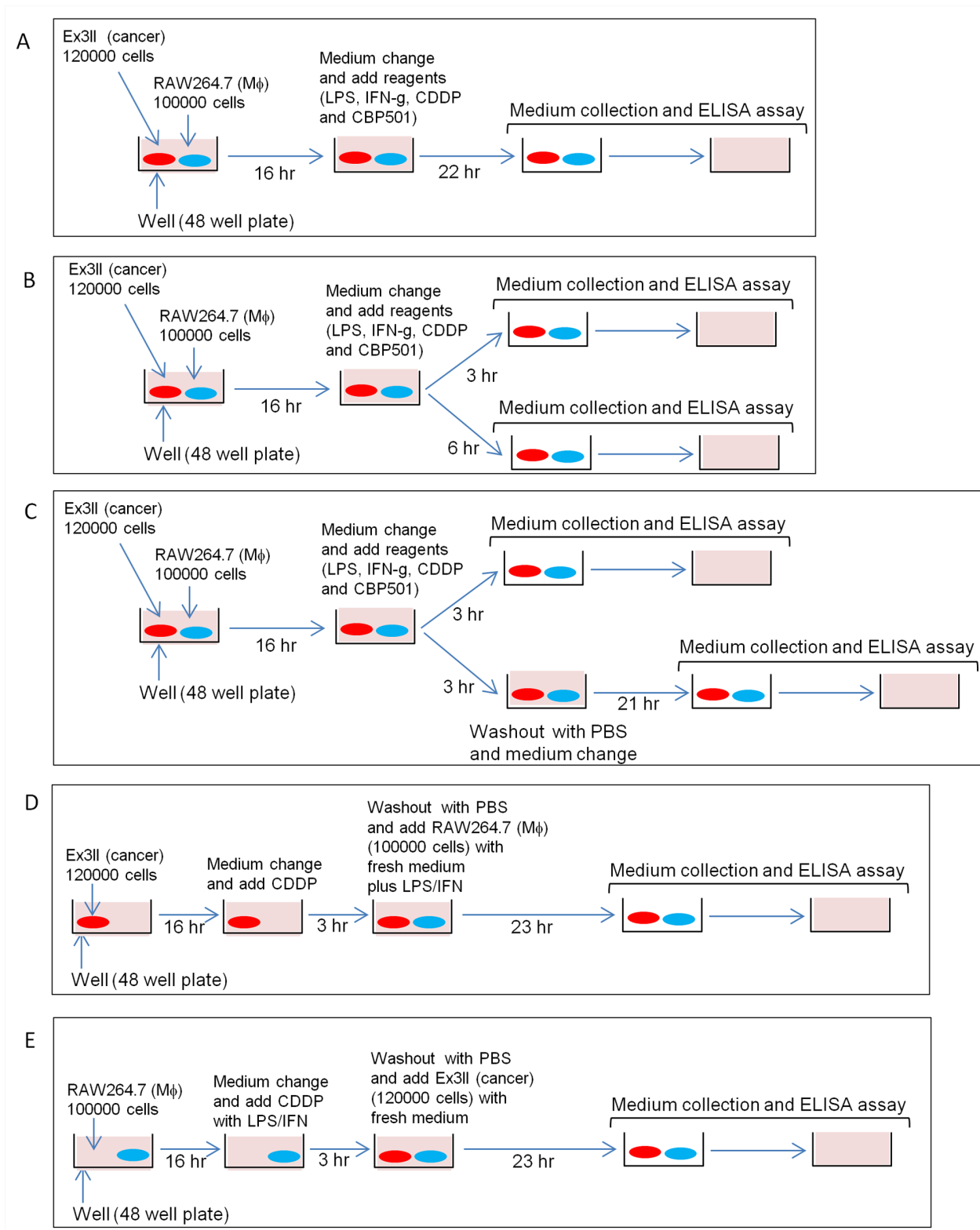


# CBP501 suppresses macrophage induced cancer stem cell like features and metastases

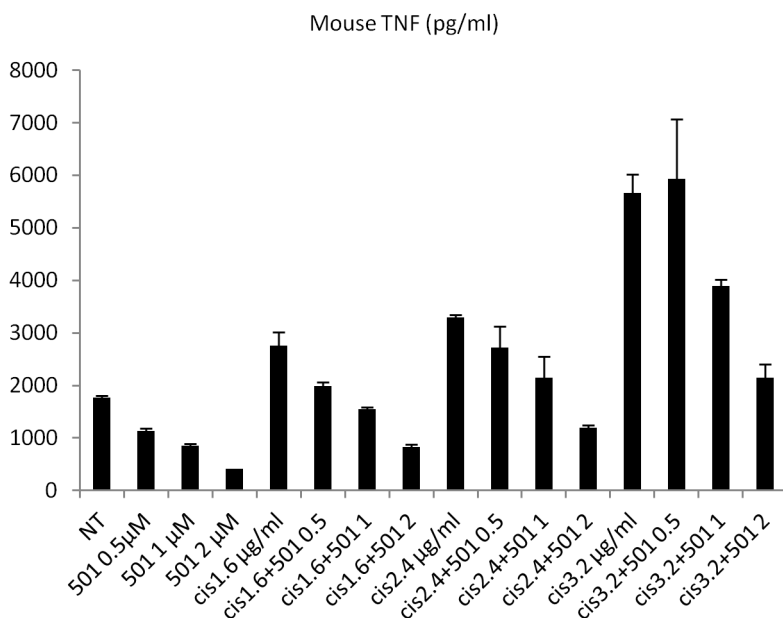
## SUPPLEMENTARY MATERIALS



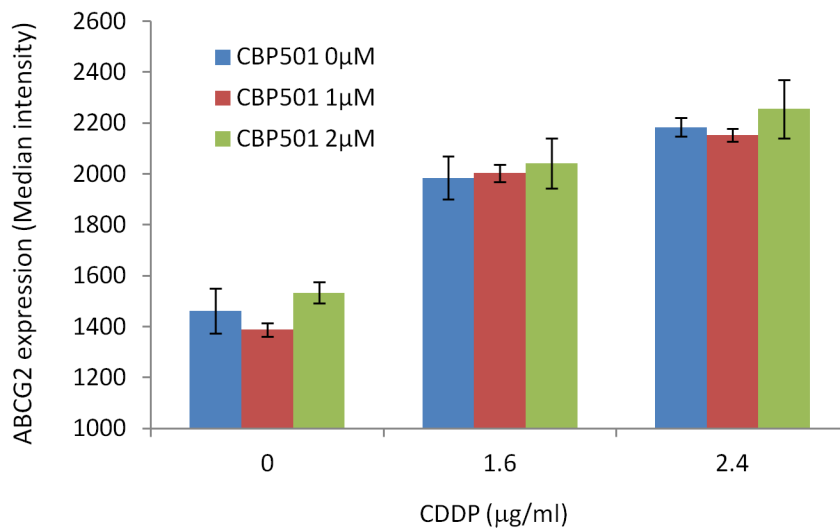
**Supplementary Figure 1: CBP501 does not increase CDDP induced cyto-toxicity in Ex3ll, RAW264.7 and 4T1 cell lines.** (A) Flowcytometry analyses for cell cycle distributions for subG1 (left graph) and G2-M phase (right graph) (n=3). 1 h treatment of drugs. Medium was replaced and cultured 48 hours. (B) WST assay (n=3). 48 h treatment of drugs. (C) Flowcytometry analyses for cell cycle distributions. Error bars indicate the standard deviation.



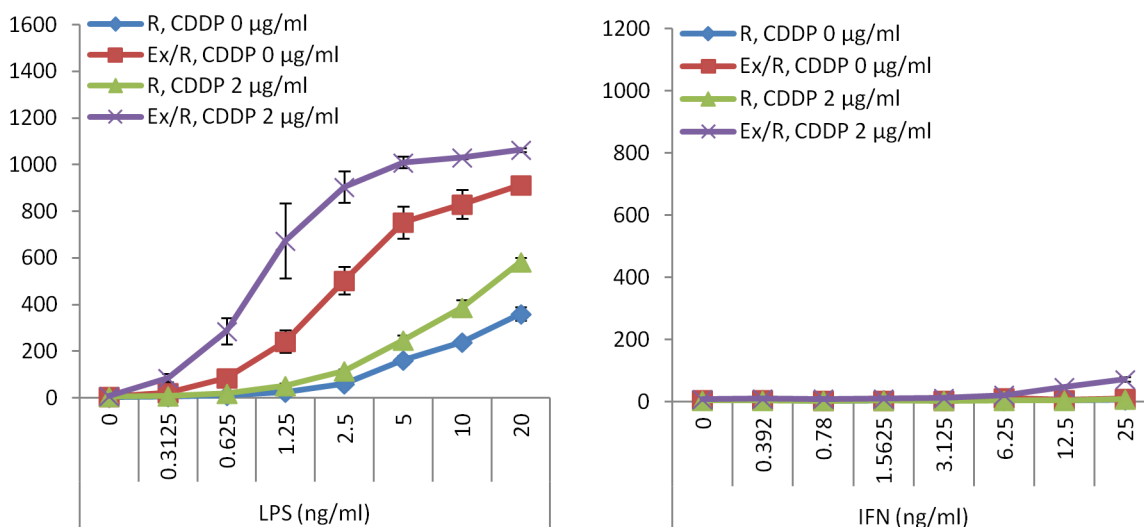
**Supplementary Figure 2: Summary of co-culture assay scheme. (A)** Co-culture assay scheme for Figure1 A-C. **(B)** Co-culture assay scheme for Figure1 D. **(C)** Co-culture assay scheme for Figure1 E. **(D)** Co-culture assay scheme for Figure2 A. **(E)** Co-culture assay scheme for Figure2 C.



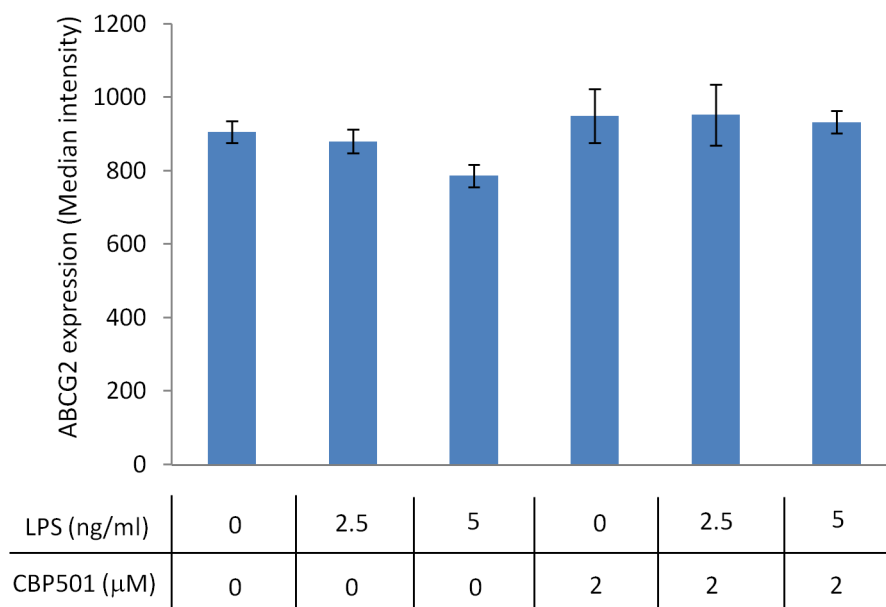
**Supplementary Figure 3: CBP501 suppresses CDDP induced TNF-α production in co-culture system of Ex3ll and RAW264.7 cell lines.** 48 h culture supplemented with 0.39 ng/ml of IFN-g and 0.078 ng/ml of LPS (n=3). Error bars indicate the standard deviation. cis:CDDP



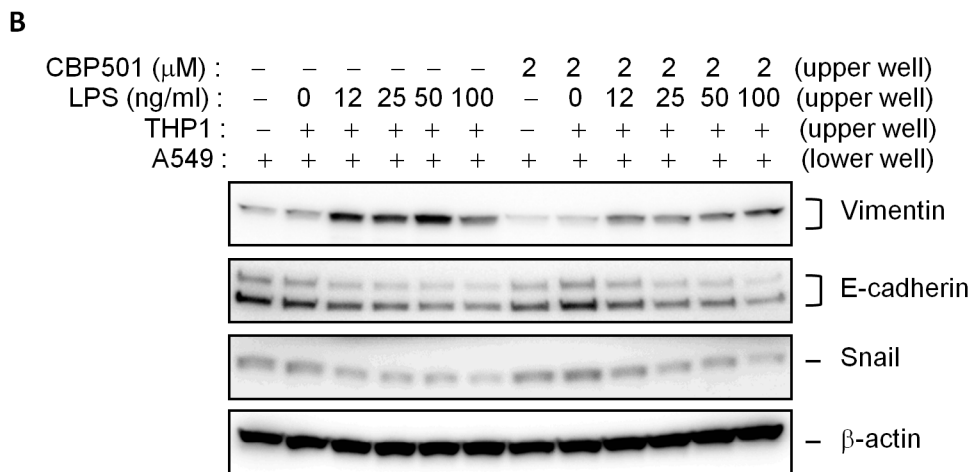
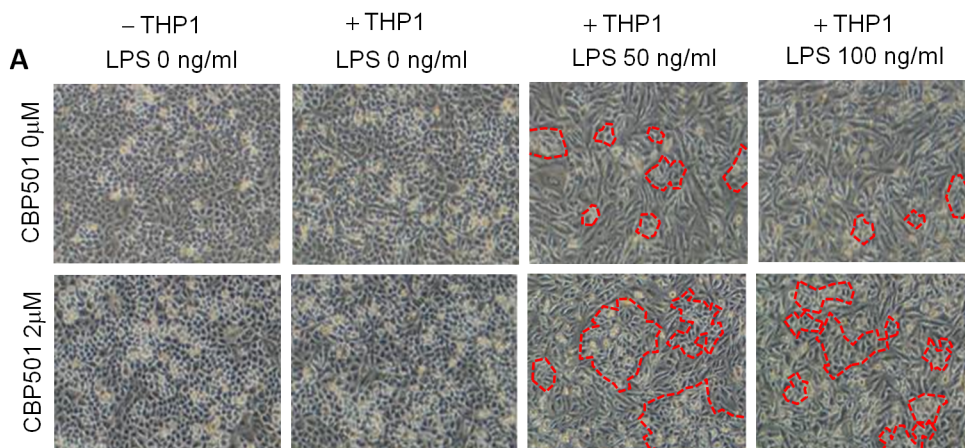
**Supplementary Figure 4: CBP501 does not suppress CDDP induced ABCG2 expression in single culture of Ex3ll.** Flowcytometry analyses for ABCG2. 48 hours culture supplemented with 0.39 ng/ml of IFN-g and 0.078 ng/ml of LPS (n=2). Error bars indicate the standard deviation.



**Supplementary Figure 5: LPS induced robust production of IL-6 but IFN- $\gamma$  did not induce IL-6 production in co-culture system.** Both left and right graphs show IL-6 production (n=3). R means single culture of RAW264.7 (100000 cells). Ex/R means co-culture of Ex3II (120000 cells) and RAW264.7 (100000 cells). Error bars indicate the standard deviation.



**Supplementary Figure 6: Conditioned medium from RAW264.7 did not increase ABCG2 expression in Ex3II.** Flowcytometry analyses for ABCG2. Conditioned medium from LPS stimulated RAW264.7 (24 h) was added to Ex3II and cultured 48 hours (n=3). Error bars indicate the standard deviation.



**Supplementary Figure 7: EMT induction in co-culture of H1299 lung cancer cell line and THP-1 derived macrophage cell line was suppressed by CBP501 treatment. (A, B) Trans-well experiments (48 hours culture). THP-1 is in upper-well. H1299 is in lower-well. (A) Microscopic images of lower-well (H1299). Red broken line is surrounding grape-shape cells (epithelial feature) in LPS stimulating condition. CBP501 treatment suppressed formation of spindle shape (mesenchymal feature). (B) Western blot analyses for EMT markers.**