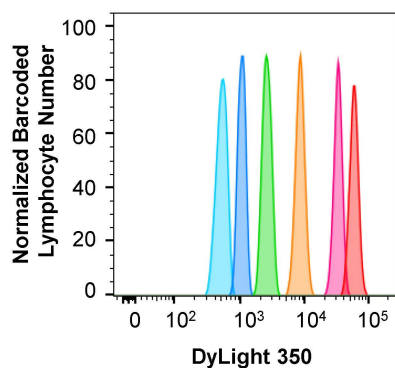


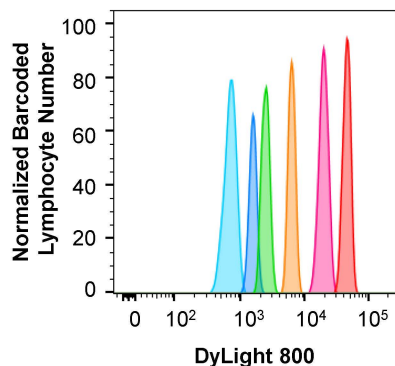
A



DyLight 350

	<u>MFI</u>	<u>CV</u>	<u>Fold increase</u>
0	432.2	18.02	
1.56	770.4	12.34	1.68
13	2268.6	12.96	2.88
50	7390.2	13.52	3.23
250	29221.4	11.94	3.95
500	50796	12.72	1.74

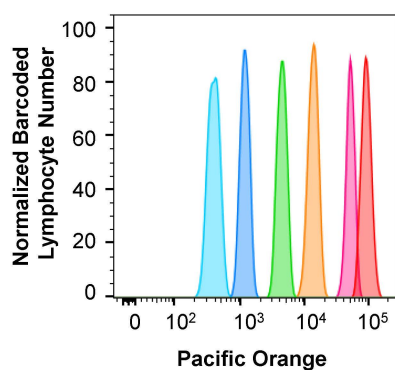
B



DyLight 800

	<u>MFI</u>	<u>CV</u>	<u>Fold increase</u>
0	578.6	17.62	
1.56	1539.6	8.624	2.57
13	2625.6	9.896	1.69
50	6148.6	10.192	2.33
250	18333.8	13.62	2.97
500	43791.8	12.06	2.39

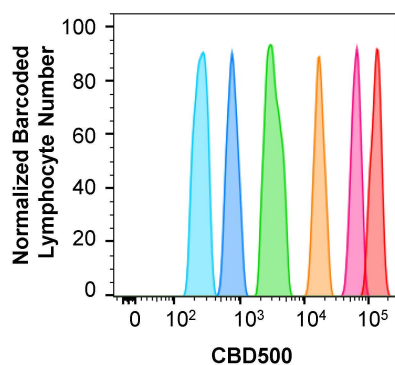
C



Pacific Orange

	<u>MFI</u>	<u>CV</u>	<u>Fold increase</u>
0	649.6	18.54	
1.56	1660.6	14.16	2.46
13	4321.4	13.74	2.57
50	14057.6	14.8	3.24
250	51838.4	11.68	3.68
500	90700	11.666	1.75

D



CBD500

	<u>MFI</u>	<u>CV</u>	<u>Fold increase</u>
0	321.4	17.5	
1.56	939.4	16.34	2.72
13	4285.4	16.96	4.47
50	13182.4	13.88	3.06
250	66927.2	13.5	5.07
500	138229	14	2.06

A

		<u>Pacific Orange</u>			<u>DyLight 800</u>			
		<u>MFI</u>	<u>CV</u>	<u>Fold increase</u>	<u>MFI</u>	<u>CV</u>	<u>Fold increase</u>	
Concentration (µg/ml)	Combo 1	0	732	20	1242	33.3		
		13	2655	20.5	3.5	5649	27.7	4.4
		250	28258	27.5	10.6	31628	23.2	5.6
	Combo 2	1.56	1601	19.7	3750	24.2		
		50	6390	19.5	3.9	13995	19.2	3.7
		500	38141	20.1	5.9	33778	22.5	2.4

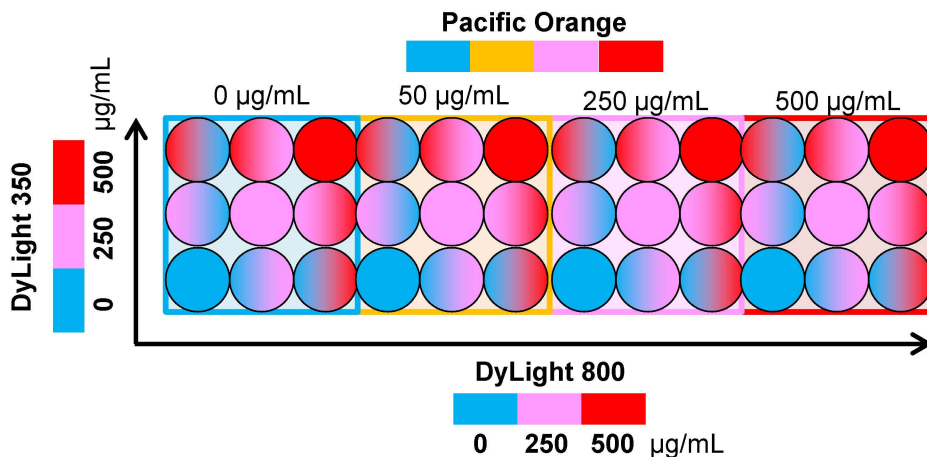
B

		<u>Pacific Orange</u>			<u>DyLight 350</u>			
		<u>MFI</u>	<u>CV</u>	<u>Fold increase</u>	<u>MFI</u>	<u>CV</u>	<u>Fold increase</u>	
Concentration (µg/ml)	Combo 1	0	591	23.2	389	22.9		
		13	1990	21.4	3.2	912	23.4	2.2
		250	23076	25.2	11.5	9269	25.4	9.9
	Combo 2	1.56	1433	22.5	528	25.3		
		50	6276	24.4	4.3	2366	28.2	4.2
		500	45679	22.2	7.2	18302	26.1	7.6

C

		<u>DyLight 800</u>			<u>DyLight 350</u>			
		<u>MFI</u>	<u>CV</u>	<u>Fold increase</u>	<u>MFI</u>	<u>CV</u>	<u>Fold increase</u>	
Concentration (µg/ml)	Combo 1	0	639	29.3	241	26.4		
		13	2326	18.8	3.5	911	21.7	3.3
		250	22868	16.6	9.7	10678	19.4	11.4
	Combo 2	1.56	2615	22.4	674	27.1		
		50	7753	16.2	2.9	2489	22.1	3.5
		500	37017	15.8	4.8	17801	18.8	7.1

A **4x(3x3) matrix – 36 samples**
Pacific Orange vs DyLight 800 vs DyLight 350

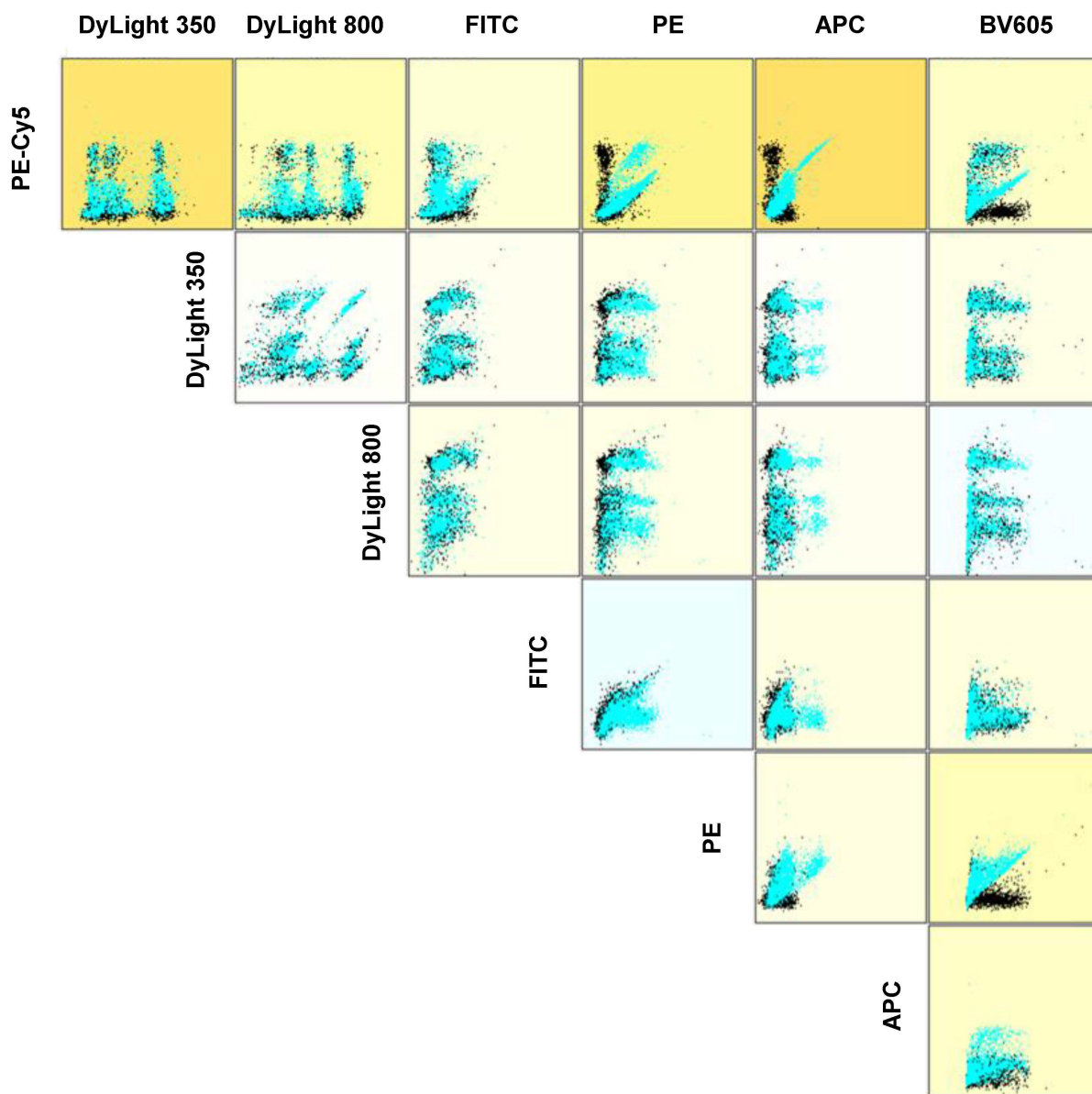


B

Concentration (µg/ml)	DyLight 350			DyLight 800			Pacific Orange		
	MFI	CV	Fold increase	MFI	CV	Fold increase	MFI	CV	Fold increase
0	482	27.4		3920	18.4		1767	18.9	
50							9606	16.3	5.4
250	2518	18.3	4.9	10157	18.1	2.6	37445	17.1	3.9
500	20131	16.1	7.9	39532	13.2	3.9	67078	18.5	1.8

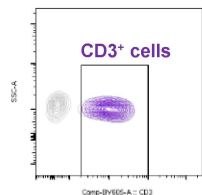
C

Concentration (µg/ml)	DyLight 350			DyLight 800			CBD500		
	MFI	CV	Fold increase	MFI	CV	Fold increase	MFI	CV	Fold increase
0	732	20.3		4737	14.2		382	14.7	
50							1079	13.9	2.7
250	2971	19.7	3.9	9681	16.6	2.0	3821	15.4	3.5
500	21256	18.8	7.1	38489	14.2	4.0	7604	13.1	2.0



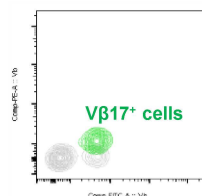
Percentage of positive cells

CD3-BV605



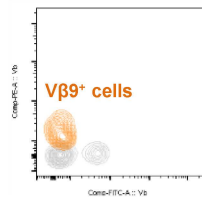
	0			13			250			Control w/o FCB	Variability	Ratio
	0	13	250	0	13	250	0	13	250			
	DyLight 350 (µg/ml)											
DyLight 800 (µg/ml)												
HC-1	48.6	44	43.2	41.3	40.7	40.1	48.2	47.2	50.3	46.2	LOW	0.97
HC-2	50.7	55.2	57.3	53.3		56.2	65.7	67	70.6	61.8	LOW	0.96
HC-3	67.5	71.1	71.6	71.4	71.1	72.2	72.7	75.9	76.7	76	LOW	0.95
HC-4	70.7	71.6	72.8	69.9	71.8	75.6	78.2	77.2	79.4	74.4	LOW	1.00
HC-5	65	61.9	67.8	57.8	57.1	62.3	77.7	78.1	79.1	56.9	LOW	1.18
HC-6	78.8	76	78.7	71.3	70	68.3	83.3	82.2	82.5	77	LOW	1.00
HC-7	51.9		54.8	46	49.8	48.3	67.5	68.7	68.4	44.1	LOW	1.29
HC-8	70.1	66.3	75.2	62.5	63.1	68.3	77.5	76	78.3	64.1	LOW	1.10

Vβ-FITC/PE



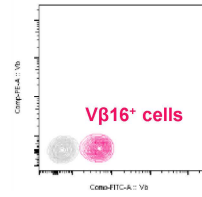
	0			13			250			Control w/o FCB	Variability	Ratio
	0	13	250	0	13	250	0	13	250			
	DyLight 350 (µg/ml)											
DyLight 800 (µg/ml)												
HC-1	2.67	2.81	3.28	1.53	2.11	4.39	3.09	3.5	3.42	3.8	LOW	0.78
HC-2	2.8	1.6	3.23	2.93		3.8	3.5	3.01	4.63	3.82	LOW	0.83
HC-3	3.78	5.19	7.18	4.02	4.06	6.06	5.83	4.24	8.14	6.65	LOW	0.81
HC-4	10.4	11.5	12.5	11	12.9	22.7	12.7	13.7	16	10.9	LOW	1.26
HC-5	2.06	3.28	3.09	1.23	2.15	2.02	2.53	1.85	3.03	2.52	LOW	0.94
HC-6	2.91	2.26	3.1	2.32	2.16	3.09	2.11	2.33	2.47	2.47	LOW	1.02
HC-7	2.38		2.7	3.36	2.15	3.69	2.37	1.73	2.6	2.93	LOW	0.90
HC-8	0.64	0.47	1.36	0.58	0.46	0.59	0.66	0.85	0.86	0.85	LOW	0.85

Vβ-PE



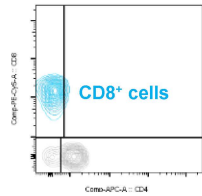
	0			13			250			Control w/o FCB	Variability	Ratio
	0	13	250	0	13	250	0	13	250			
	DyLight 350 (µg/ml)											
DyLight 800 (µg/ml)												
HC-1	1.53	1.2	1.82	2.45	0.9	1.88	0.62	0.27	1.14	1.37	LOW	0.96
HC-2	1.75	1.33	0.25	1.02		0.84	1.23	1.42	1.6	0.99	LOW	1.19
HC-3	2.77	3.8	2.71	2.57	2.2	3.24	2.35	3.33	3.76	1.97	LOW	1.51
HC-4	1.52	0.85	1.39	0.27	0.26	0.45	1.6	1.83	0.81	1.44	LOW	0.69
HC-5	1.52	0.99	1.34	1.7	1.08	0.97	1.06	1.37	1.56	1.75	LOW	0.74
HC-6	4.06	2.63	2.94	4.21	3.39	3.51	3.17	2.91	2.4	3.07	LOW	1.06
HC-7	0.32		0.35	0.19	0.41	0.74	0.17	0.23	0.28	0.66	LOW	0.51
HC-8	0.78	0.37	0.9	0.35	0.66	0.39	0.33	0.17	0.38	0.48	LOW	1.00

Vβ-FITC



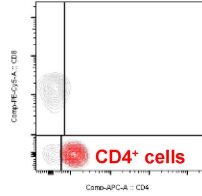
	0			13			250			Control w/o FCB	Variability	Ratio
	0	13	250	0	13	250	0	13	250			
	DyLight 350 (µg/ml)											
DyLight 800 (µg/ml)												
HC-1	1.53	0.4	1.09	1.83	2.41	1.57	2.15	1.62	2.56	2.43	LOW	0.69
HC-2	5.94	2.93	2.49	3.57		2.95	1.44	2.48	1.25	2.36	LOW	1.22
HC-3	4.91	5.06	2.24	4.8	4.29	2.19	4.37	4.04	2.14	2.45	LOW	1.54
HC-4	5.81	4.7	6.71	7.24	6.04	0.89	5.5	5.25	1.22	4.89	LOW	0.99
HC-5	0.98	0.89	0.58	0.94	0.88	0.61	0.98	1.05	0.62	0.98	LOW	0.85
HC-6	2.2	1.88	0.4	1.74	1.39	1.17	1.06	1.29	0.47	1.12	LOW	1.15
HC-7	0.53		0.24	0.75	1.23	0.46	1.07	1.05	0.49	1.2	LOW	0.61
HC-8	20.4	23.2	23.5	22.5	23	21.8	22.8	20.5	20.4	13.6	HIGH	1.62

CD8-PE-Cy5



	0			13			250			Control w/o FCB	Variability	Ratio
	0	13	250	0	13	250	0	13	250			
	DyLight 350 (µg/ml)											
DyLight 800 (µg/ml)												
HC-1	11.7	12.7	13.4	14.7	13.6	14.6	13.3	13.7	12.2	15.5	HIGH	0.86
HC-2	37.9	41.1	41.9	40.7		43.7	40	36.9	36.9	42.6	LOW	0.94
HC-3	39.1	41.4	38.8	41.7	40.2	39.6	38.4	39.6	37.5	44.5	HIGH	0.89
HC-4	19.5	23.1	21	22.3	22.6	22.1	20	20.2	22.2	23.8	LOW	0.90
HC-5	29.4	32.2	30.6	36.5	35.2	35.8	29	27.6	28.5	35.4	LOW	0.89
HC-6	23.9	26.2	25.8	37.2	38.1	39.6	30.4	31.3	31.4	35.2	LOW	0.90
HC-7	39.5		35.4	43.2	40.6	41.7	31.5	29.8	29.3	39	LOW	0.93
HC-8	37.1	40.1	37.3	47.4	47.3	48.6	41	38.4	40.9	44	LOW	0.95

CD4-APC



	0			13			250			Control w/o FCB	Variability	Ratio
	0	13	250	0	13	250	0	13	250			
	DyLight 350 (µg/ml)											
DyLight 800 (µg/ml)												
HC-1	85.5	84.1	81.3	82.7	83.1	80.3	75	73.9	70.5	82.2	LOW	0.97
HC-2	52	47.1	42.6	49.3		42	41	42.7	36.5	49.6	LOW	0.89
HC-3	33.6	35	31.4	34.3	35.1	30	36.4	35.4	31	36.7	LOW	0.91
HC-4	66	66.3	63.6	64.1	63.5	59.8	64.1	62.3	58.6	64.5	LOW	0.98
HC-5	54.7	50.2	49.2	44.3	45.7	37.9	38.6	38.2	35.3	45.1	LOW	0.97
HC-6	71.4	68.3	68	55.8	54.2	50.1	51.6	52	50.6	56.6	LOW	1.02
HC-7	54.7		55.2	50.7	53.5	41.7	38.1	37.3	35.7	52.2	LOW	0.88
HC-8	54.2	50.5	47.4	40.2	41	30.8	35.5	36.9	36.5	18.6	HIGH	2.23

Median Fluorescence Intensity

CD3-BV605

	0			13			250			0 µg/ml population	Variability	Ratio
	0	13	250	0	13	250	0	13	250			
DyLight 350 (µg/ml)												
DyLight 800 (µg/ml)	0	13	250	0	13	250	0	13	250			
HC-1	794	914	875	923	853	875	931	899	869	794	HIGH	1.11
HC-2	563	586	588	618		586	772	721	733	563	LOW	1.15
HC-3	658	673	750	676	714	731	794	790	826	658	LOW	1.12
HC-4	857	955	1010	906	923	962	1122	1165	1093	857	LOW	1.17
HC-5	1083	1063	1109	1046	1051	1017	1247	1173	1124	1083	LOW	1.02
HC-6	1027	1078	1083	1003	1001	957	1086	1068	1061	1027	LOW	1.01
HC-7	741		889	764	798	796	1008	1024	964	741	LOW	1.18
HC-8	973	987	1012	1003	989	914	1106	1053	1066	973	LOW	1.04

Vβ-FITC/PE PE MFI

	0			13			250			0 µg/ml population	Variability	Ratio
	0	13	250	0	13	250	0	13	250			
DyLight 350 (µg/ml)												
DyLight 800 (µg/ml)	0	13	250	0	13	250	0	13	250			
HC-1	76.7	55.6	94.2	76.7	86.7	73	94.8	65.9	127	76.7	LOW	1.09
HC-2	82.8	104	74.4	64.2		69	75.8	75.8	95.5	82.8	LOW	0.97
HC-3	74.4	68.4	80.5	69.8	81.4	85.8	69.8	66.4	92.7	74.4	LOW	1.03
HC-4	79.3	84	118	81.4	86.7	93	85.2	115	137	79.3	LOW	1.23
HC-5	83.1	82.2	92.7	100	93.6	107	79	85.8	90	83.1	LOW	1.09
HC-6	89.4	76.4	95.2	83.1	85.5	93	74.4	80.8	107	89.4	LOW	0.98
HC-7	137		93.9	71.5	82.2	89.1	82.8	105	93.6	137	HIGH	0.69
HC-8	122	134	148	127	112	153	139	128	167	122	LOW	1.12

Vβ-FITC/PE FITC MFI

	0			13			250			0 µg/ml population	Variability	Ratio
	0	13	250	0	13	250	0	13	250			
DyLight 350 (µg/ml)												
DyLight 800 (µg/ml)	0	13	250	0	13	250	0	13	250			
HC-1	288	310	244	274	334	225	329	247	210	288	LOW	0.95
HC-2	251	513	195	313		166	321	232	232	251	LOW	1.11
HC-3	281	257	233	267	254	229	232	279	253	281	LOW	0.90
HC-4	400	418	368	409	372	326	405	450	417	400	LOW	0.99
HC-5	315	316	257	408	337	299	307	377	232	315	LOW	1.00
HC-6	366	291	321	314	307	249	268	276	299	366	LOW	0.82
HC-7	370		234	268	267	214	261	279	232	370	HIGH	0.72
HC-8	442	507	339	370	486	371	433	486	335	442	LOW	0.95

Vβ-FITC

	0			13			250			0 µg/ml population	Variability	Ratio
	0	13	250	0	13	250	0	13	250			
DyLight 350 (µg/ml)												
DyLight 800 (µg/ml)	0	13	250	0	13	250	0	13	250			
HC-1	227	218	259	228	172	229	180	174	195	227	LOW	0.92
HC-2	165	211	204	174		168	171	174	165	165	LOW	1.08
HC-3	205	197	176	200	203	197	207	213	191	205	LOW	0.97
HC-4	229	261	307	243	254	188	271	344	342	229	LOW	1.18
HC-5	252	208	301	256	334	209	229	185	240	252	LOW	0.98
HC-6	224	262	318	224	234	214	229	208	185	224	LOW	1.04
HC-7	228		211	201	188	186	177	179	173	228	LOW	0.85
HC-8	464	461	464	487	479	450	482	468	452	464	LOW	1.01

Vβ-PE

	0			13			250			0 µg/ml population	Variability	Ratio
	0	13	250	0	13	250	0	13	250			
DyLight 350 (µg/ml)												
DyLight 800 (µg/ml)	0	13	250	0	13	250	0	13	250			
HC-1	158	111	121	126	135	129	172	91.5	126	158	LOW	0.82
HC-2	182	215	217	153		133	211	168	167	182	LOW	0.99
HC-3	183	183	171	190	203	160	185	183	181	183	LOW	1.00
HC-4	114	124	210	166	137	102	167	206	106	114	LOW	1.30
HC-5	214	231	191	228	222	191	182	246	178	214	LOW	0.98
HC-6	200	223	180	200	208	158	168	185	175	200	LOW	0.94
HC-7	124		184	120	123	135	188	135	112	124	LOW	1.13
HC-8	166	126	165	212	151	168	257	412	239	166	LOW	1.27

CD8-PE-Cy5

	0			13			250			0 µg/ml population	Variability	Ratio
	0	13	250	0	13	250	0	13	250			
DyLight 350 (µg/ml)												
DyLight 800 (µg/ml)	0	13	250	0	13	250	0	13	250			
HC-1	1152	1078	942	1179	1125	909	1035	1045	928	1152	LOW	0.91
HC-2	928	871	738	924		610	939	937	806	928	LOW	0.91
HC-3	884	810	717	816	867	731	857	859	750	884	LOW	0.92
HC-4	1160	1135	1037	1130	1141	978	1157	1154	1030	1160	LOW	0.95
HC-5	1307	1141	1035	1202	1191	1067	1231	1125	1045	1307	LOW	0.88
HC-6	1438	1316	1163	1384	1377	1225	1313	1335	1182	1438	LOW	0.91
HC-7	1101		900	994	1023	926	1006	1055	926	1101	LOW	0.90
HC-8	1354	1335	1270	1411	1326	1240	1374	1361	1307	1354	LOW	0.98

CD4-APC

	0			13			250			0 µg/ml population	Variability	Ratio
	0	13	250	0	13	250	0	13	250			
DyLight 350 (µg/ml)												
DyLight 800 (µg/ml)	0	13	250	0	13	250	0	13	250			
HC-1	108	93.3	78.9	98.5	95.6	78.9	92	91.2	74.2	108	LOW	0.83
HC-2	78.9	70.8	63.2	81.1		62.3	80.8	85	70.3	78.9	LOW	0.94
HC-3	55.7	58.2	53.8	61.5	61.7	54	64.1	61.9	54.9	55.7	LOW	1.05
HC-4	80.6	84	74	82.5	84	72.6	83.5	83.5	74.7	80.6	LOW	0.99
HC-5	101	90.7	77.5	97.2	90.5	76.1	95.1	87.7	75.6	101	LOW	0.87
HC-6	115	110	92.5	109	104	89.2	105	103	91.2	115	LOW	0.89
HC-7	82		72.6	80.1	82	70.8	81.3	83	73.8	82	LOW	0.95
HC-8	127	128	120	130	127	108	129	130	118	127	LOW	0.98