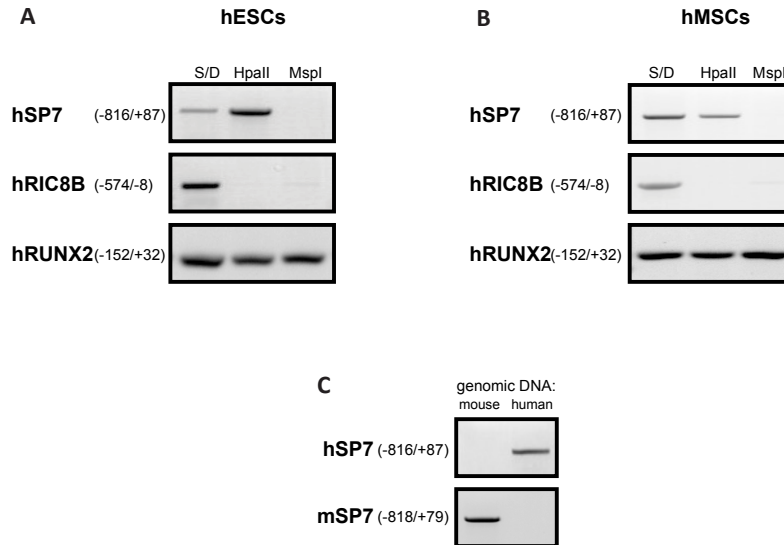


Supplementary Figure S2



Sp7 promoter exhibits DNA methylation in human Embryonic (hESCs) and human Mesenchymal (hMSCs) Stem Cells.

(A-B) Genomic DNA samples from human **(A)** Embryonic Stem Cells H9 and **(B)** Mesenchymal Stem Cells were analyzed for CpG methylation at the Sp7 gene promoter region evaluating cleavage sensibility to DNA methylation by the restriction enzymes HpaII (sensitive) and MspI (insensitive). Digested DNA samples were then amplified by conventional PCR, using primers against the Sp7, Ric8B and Runx2 promoters regions.

(C) As hESCs were cultured over a mouse MEF, we tested the specificity of the primers against human and mouse Sp7 promoters sequences by conventional PCR analysis.