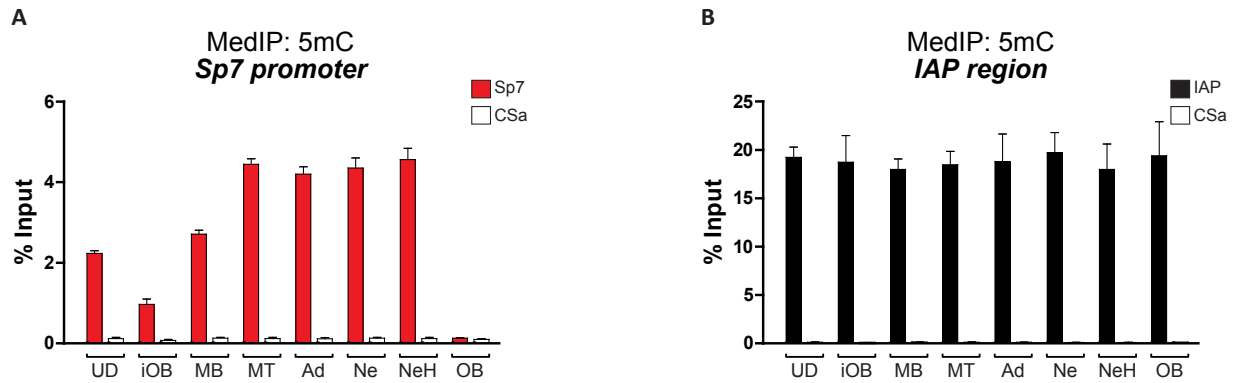


Supplementary Figure S3



UD: Undifferentiated C3H10T1/2 cells
iOB: C3H10T1/2 stimulated with BMP2

MB: C2C12 myoblasts
MT: C2C12 myotubes

Ad: 3T3-L1 adipocytes
Ne: Neuronal N2a cells

NeH: Neuron hippocampal HT-22 cells
OB: MC3T3 osteoblasts

Non-osteoblastic cells exhibit DNA hypermethylated *Sp7* gene promoter.

(A) MedIP assays were performed in indicated cells types and recovered DNA was amplified using specific primers against the *Sp7* promoter. (B) The methylated IAP region was analyzed as positive control. The unmethylated region CSa was included as negative control. Enrichments were expressed as percentage of immunoprecipitation respect to input genomic DNA.