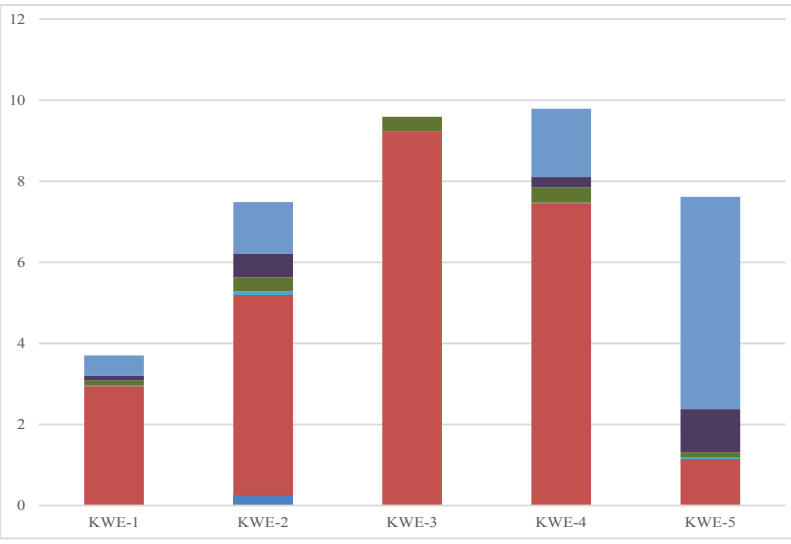
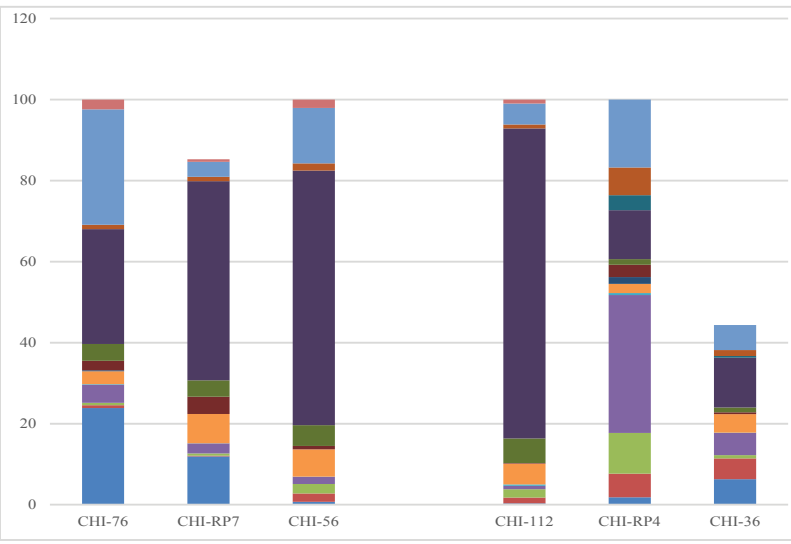


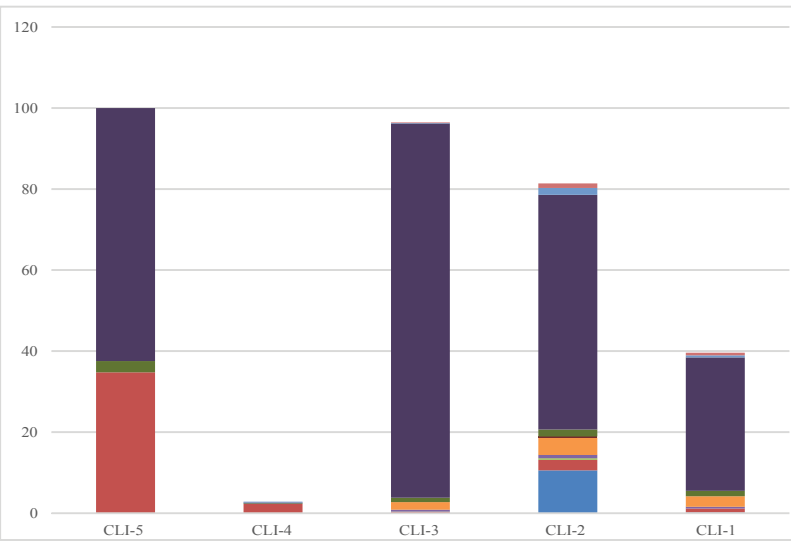
(A) Fox River



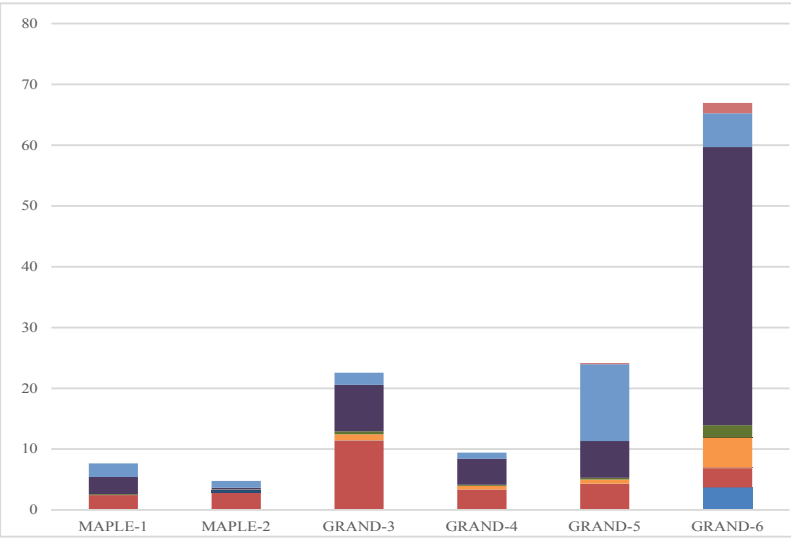
(B) Kewaunee River



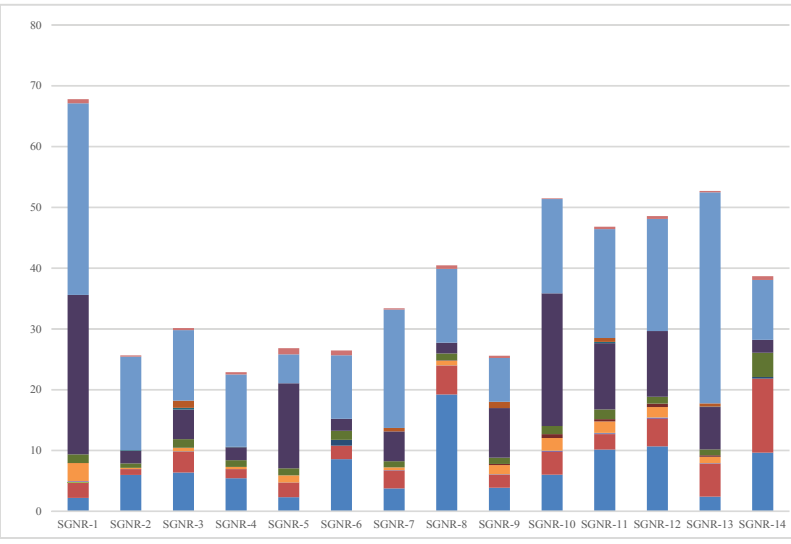
(C) Little Calumet River and North Shore Channel



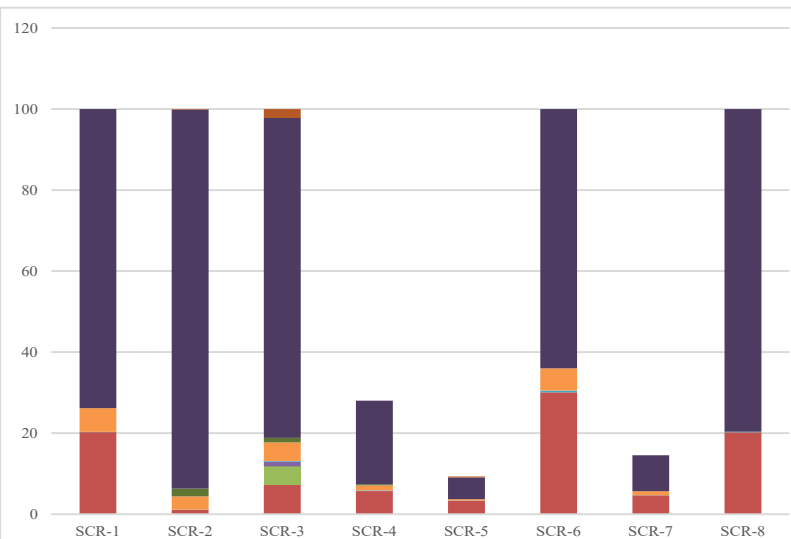
(D) Clinton River



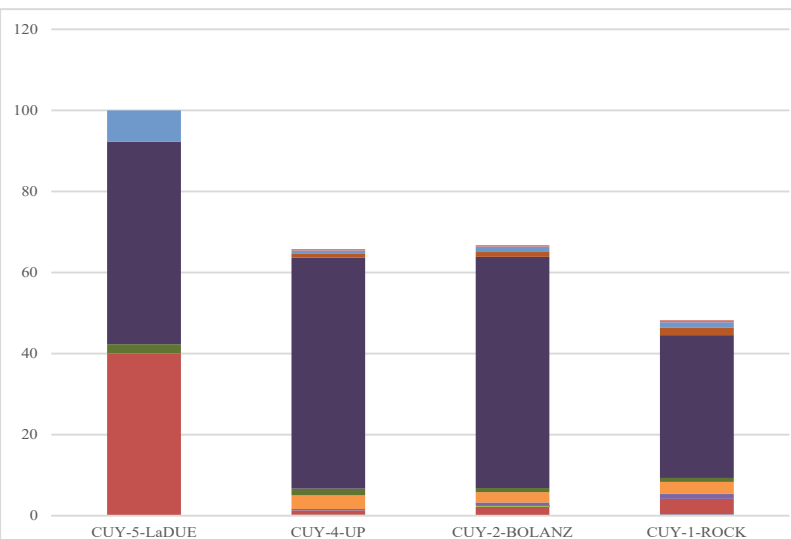
(E) Maple and Grand Rivers



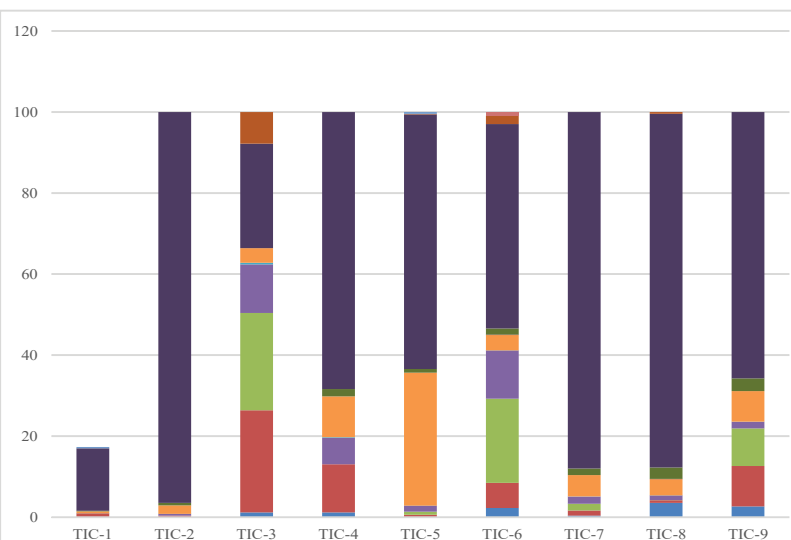
(F) Saginaw River



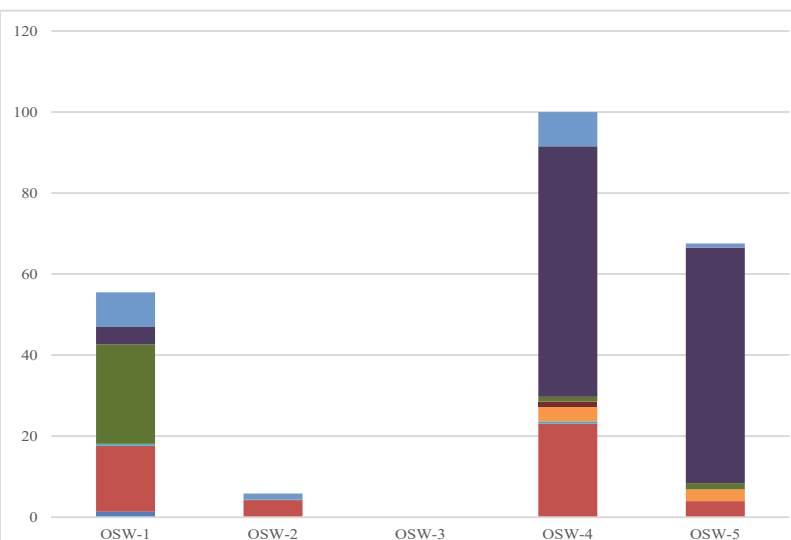
(G) St. Clair River



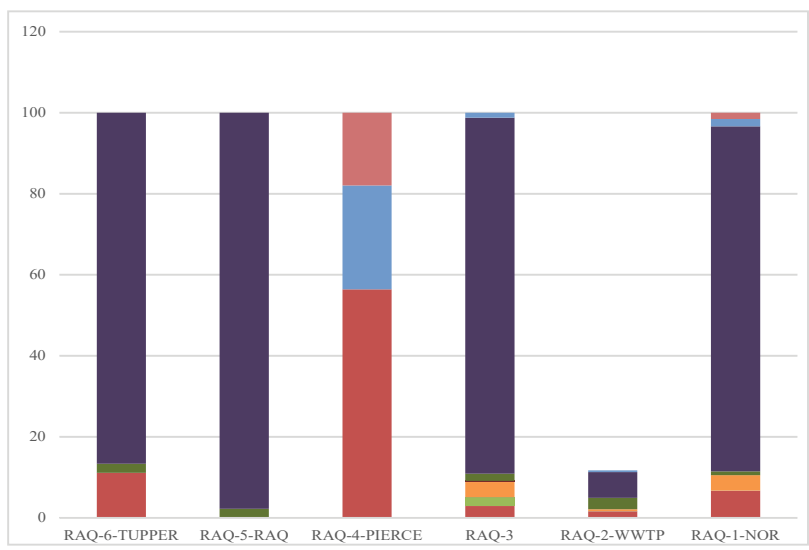
(H) Cyahoga River



(I) Tinkers Creek



(J) Oswegatchie River



(K) Raquette River

S13 Fig. Relative concentrations (based on maximum concentrations reported in S3 Table) of chemical classes in sediment samples from U.S. tributaries to the Great Lakes. Sterols excluded because they comprised a relatively large percentage of total concentrations. The difference between 100 and total percent shown in graphs represents sterols.