

## Loss of calponin h1 confers anoikis resistance and tumor progression in the development of high-grade serous carcinoma originating from the fallopian tube epithelium

### SUPPLEMENTARY MATERIALS

**Supplementary Table 1: The primers used in this study**

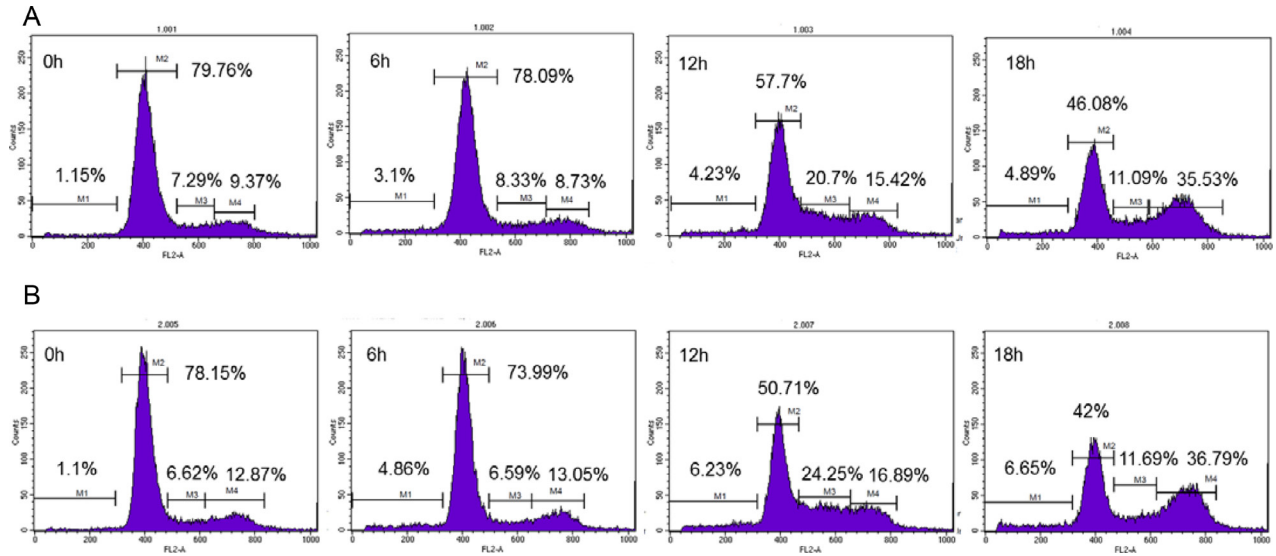
Target	Sequence
CNN1 QF	GCGGAAATTCGAGCCGGGGAA
CNN1 QR	TGTGCCCAGCTTGGGGTCGT
CNN1-Full-F	GGATCCATGTCCTCTGCTCACTTC
CNN1-Full-R	GGTACCTAGGCGGAATTGTAGTAG
ACTB QF	AACTCCATCATGAAGTGTGACG
ACTB QR	GATCCACATCTGCTGGAAGG

**Supplementary Table 2: The control and CNN1 shRNA used in this study**

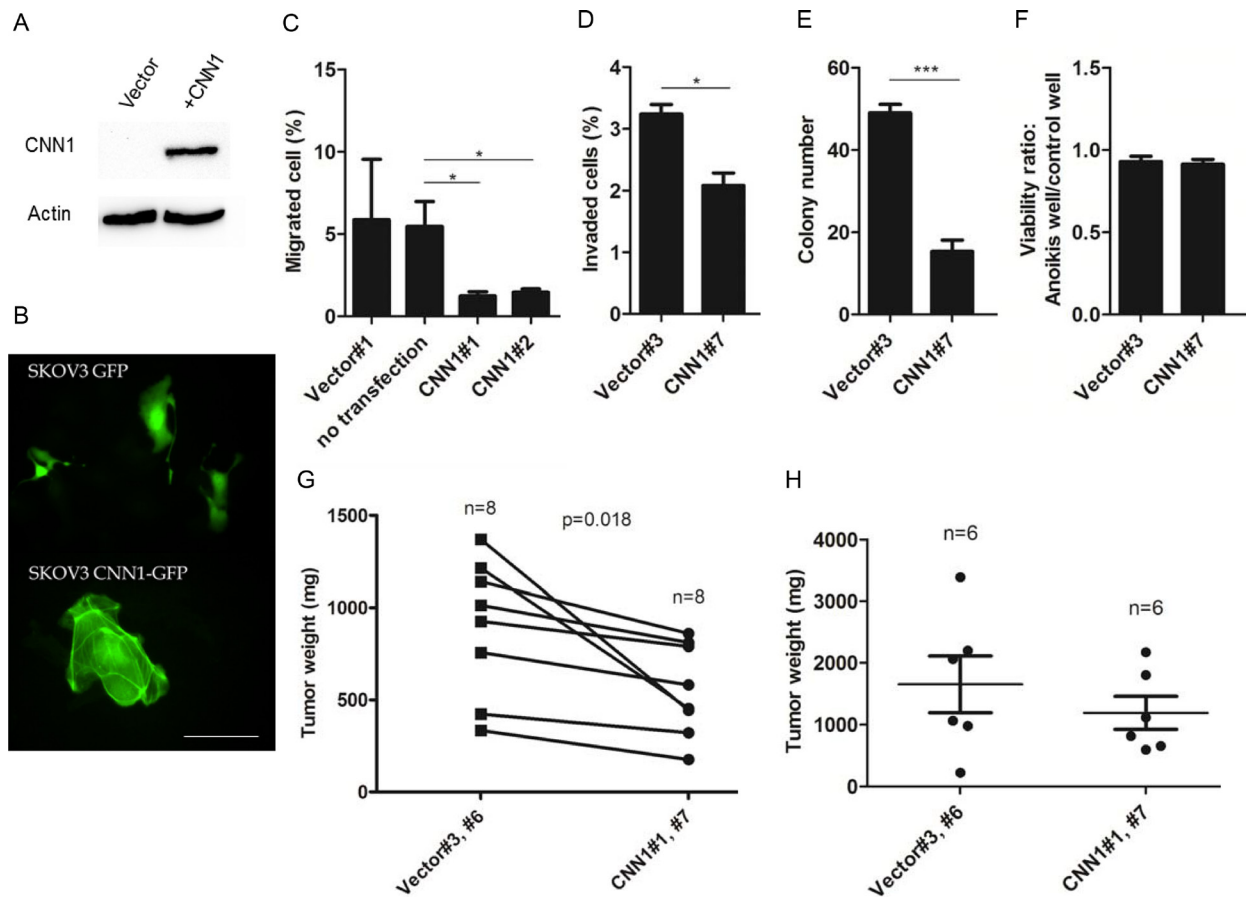
Target	Sequence
GAPDH	GTATGACAACAGCCTCAAG
NC	TTCTCCGAACGTGTACGT
CNN1-322	GCCTCAAAGATGGCATCATTC
CNN1-416	GCTGGAGAACATCGGCAACTT
CNN1-555	GCGAAGACGAAAGGAAACAAG
CNN1-1032	GCACACAACACTACTACAATTCC

Backbone vector: PU6/RFP/Neo.

The numbers are the position of nucleotide of CNN1 mRNA.



**Supplementary Figure 1: Anoikis culture resulted in a reduced distribution at G1 phase and increase distribution at G2 phase of cell cycle in FE-RAS cells regardless the level of CNN1 expression. (A, B) Cell cycle analysis of FE-RAS transfected with control vector clone #12 (A) or CNN1 clone #12 (B) and grew in poly-HEMA coating plate for 0 h, 6 h, 12 h, and 18 h. The percentage of cells at sub G0, G1, S, G2 phases were showed, respectively.**



**Supplementary Figure 2: Overexpression of CNN1 conferred a change of cellular morphology and suppression of transformation phenotype of SKOV3 cells.** CNN1 (+CNN1) and the GFP-vector only (Vector) were transfected into SKOV3 cells. Expression of CNN1 protein was confirmed by Western blot (A). Morphology of the GFP vector- and CNN1-transfectants viewed under inverted fluorescent microscope (B). Comparisons of transformation phenotypes including cell migration (C), invasion (D), anchorage-independent growth (AIG) (E), survival to anoikis (F), as well as xenograft tumorigenesis with s.c. (G) or i.p. (H) injection were showed. Shown are results from representative clones. Detail materials and methods were the same as shown in the article.

**Supplementary Data 1: Microarray data of CNN1-overexpressing vs vector-control FE-RAS cells.** See Supplementary\_Data\_1.

**Supplementary Data 2: Gene list after ontology analysis.** See Supplementary\_Data\_2.