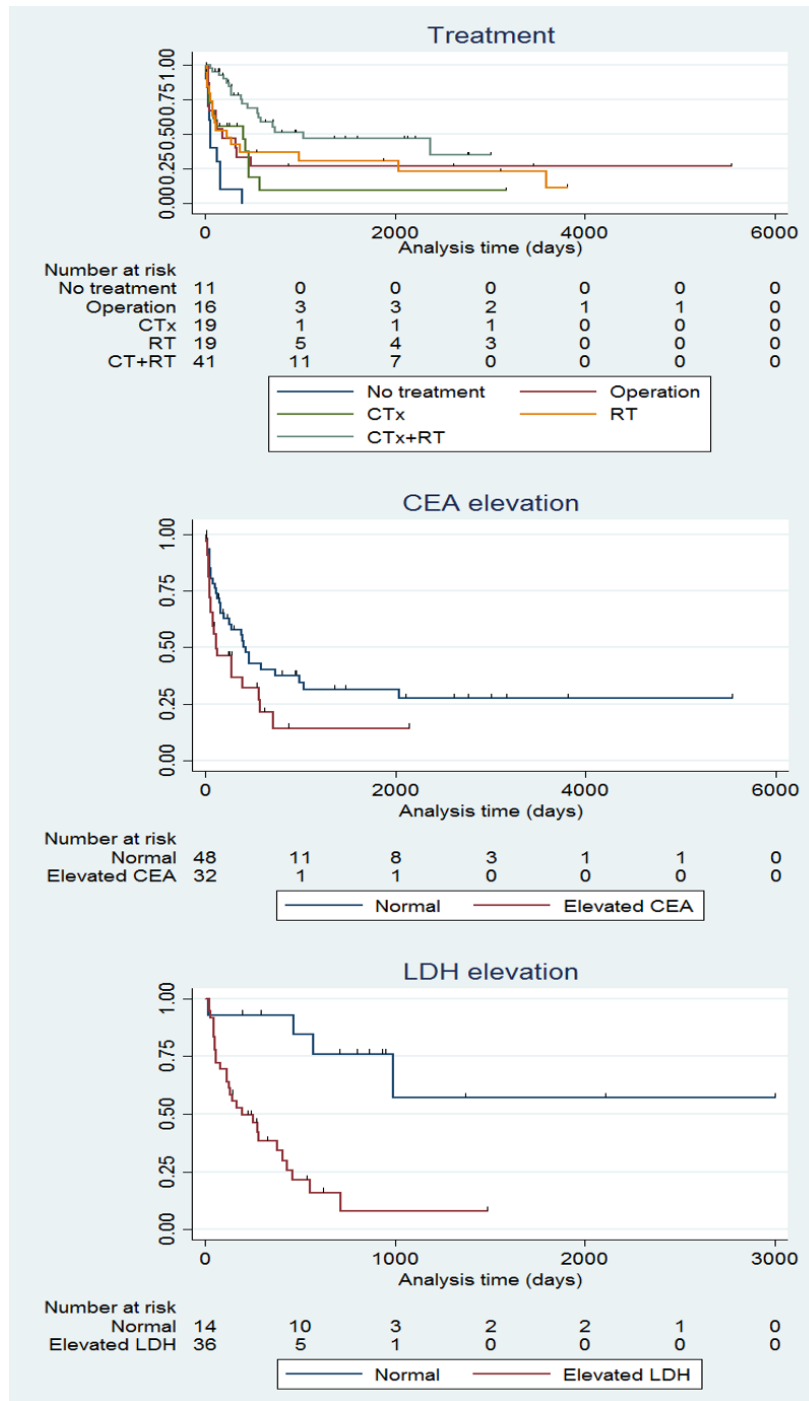


# Prognostic clinicopathologic factors in carcinoma of unknown primary origin: a study of 106 consecutive cases

## Supplementary Material



Supplementary Figure 1: Factors related with shorter overall survival was patients with no treatment ( $P < 0.001$ ), increased CEA ( $P = 0.047$ ), and increased lactate dehydrogenase (LDH,  $P < 0.001$ ).

**Supplementary Table 1.**

<b>Antibody</b>	<b>Industry</b>	<b>Catalog number</b>	<b>Dilution rate</b>
CK (AE1/AE3)	DAKO	M3515	1:50
S-100 protein	DAKO	Z0311	1:400
HMB45	DAKO	M0634	1:50
CD45	DAKO	M0701	1:100
CK7	DAKO	M7018	1:100
CK20	DAKO	M7019	1:50
CDX-2	Cell marque	235R-16	1:400
Synaptophysin	DAKO	M7315	1:900
Chromogranin	DAKO	M0869	1:500
CD56	NOVOCASTRA	NCL-L-CD56-504	1:100