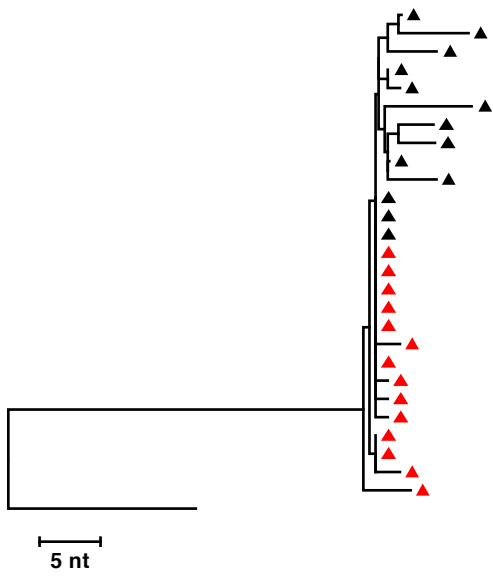
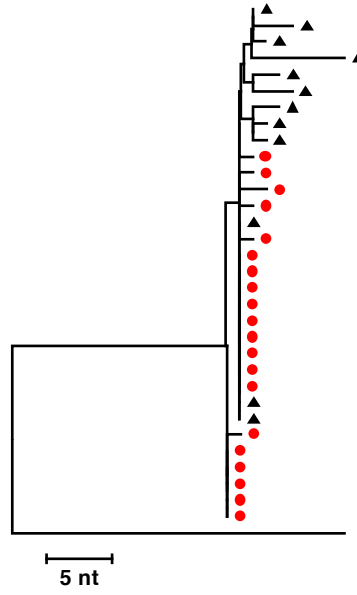


**Figure S1**

**A ZA001 (2.5 years of detectable viremia)**  
▲ 5.5 months on ART (DNA) (15.1 Months of age)  
▲ 8 years on ART (simulated DNA)



**B ZA002 (1.3 years of detectable viremia)**  
● 1.3 years on ART (Plasma RNA) (1.7 Months of age)  
▲ 7 years on ART (simulated DNA)



**Table S1: Participant and sample characteristics**

Participant group	PID	Gender	Pre-ART plasma HIV RNA <sup>a</sup> (c/mL)	ART regimen	Age at ART initiation (months)	Age at baseline sample in months (sample type)	Age at long-term ART sample in months	Long-term ART plasma HIV RNA <sup>a</sup> (c/ml)	Baseline HIV DNA <sup>c</sup> (c/million PBMC)	Long-term ART HIV DNA <sup>c</sup> (c/million PBMC)	CD4% after long-term ART	
Not suppressed on ART for part of sampling period	ZA001	Female	696,000	AZT/3TC/LPV/r	10.9	14.5 (PBMC)	105.9	<40	458.7	86.3	47	
	ZA002	Male	654,000	AZT/3TC/LPV/r	17.4	1.8 (plasma)	99.7	<40	NA	32.8	33	
	ZA003	Male	>750,000	ABC*/3TC/LPV/r	1.8	1.4 (plasma)	98.5	<40	NA	1.5	21	
	ZA004	Male	>750,000	AZT/3TC/LPV/r	2.7	12.0 (PBMC)	107.8	<40	2,431.1	23.6	46	
	ZA005	Male	>750,000	AZT/3TC/LPV/r	6.0	14.3 (PBMC)	102.4	<40	435.3	9.2	41	
	Continuous suppression on ART for duration of sampling period	ZA006	Female	635,000	AZT/3TC/LPV/r	9.0	14.4 (PBMC)	98.3	<40	340.4	46.7	50
		ZA007	Male	>750,000	AZT/3TC/EFV <sup>#</sup>	9.9	15.1 (PBMC)	108.6	<40	65.1	21.3	35
		ZA008	Female	>750,000	AZT/3TC/LPV/r	2.2	26.1 (PBMC)	83.4	<40	1,567.7	42.3	36
		ZA009	Female	>750,000	AZT/3TC/EFV <sup>#</sup>	2.0	7.7 (PBMC)	111.5	<40	28,084.2	186.2	29
	ZA010	Female	510,000	AZT/3TC/LPV/r	1.8	7.3 (PBMC)	101.8	<40	63.4	4.5	39	

<sup>a</sup> Roche Amplicor HIV Monitor assay version 1.0

<sup>b</sup> Abbott Diagnostics RealTime HIV-1 assay

<sup>c</sup> proviral copy number per million PBMCs measured by qPCR (15)

<sup>#</sup> 3 children had single drug switches for adverse effects, \* denoting an AZT to ABC switch and # denoting a LPV/r to EFV switch