

Supplementary Materials: *Typhonium giganteum* Lectin Exerts A Pro-Inflammatory Effect on RAW 264.7 via ROS and The NF-κB Signaling Pathway

Wei Wang, Hao Wu, Hongli Yu, Xingde Zhang, Guojing Cui, Kuilong Wang, Shanhu Mao and Yaozong Pan

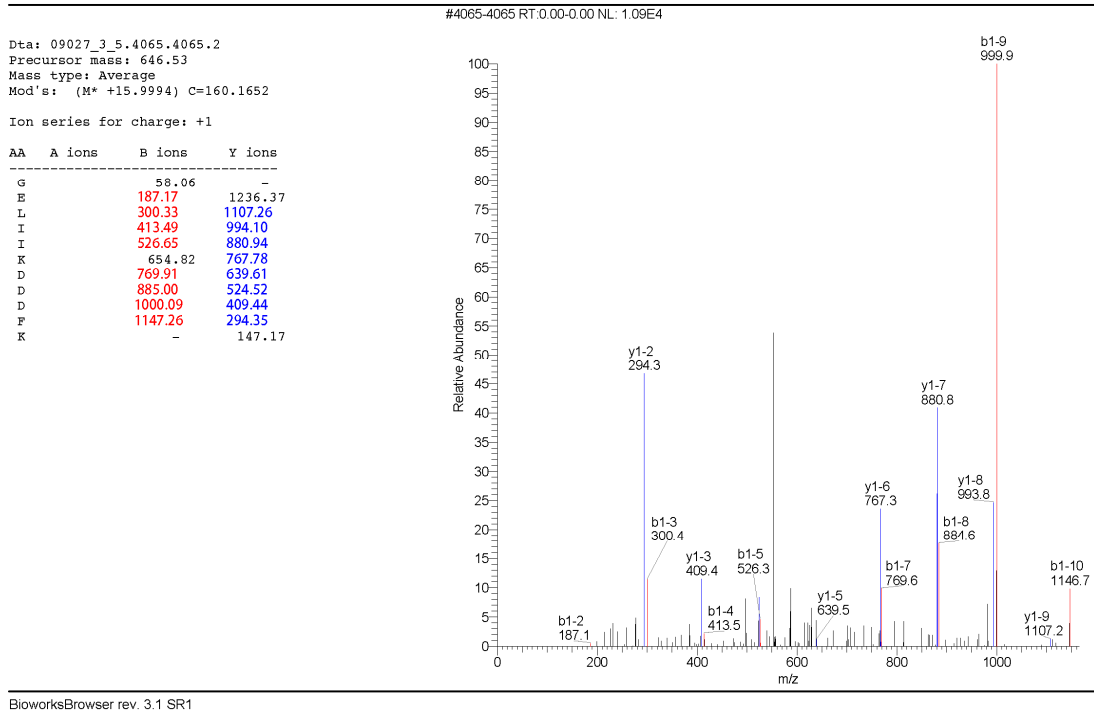


Figure S1. MS/MS analysis of 'GELIIKDDDFK' from TGL.

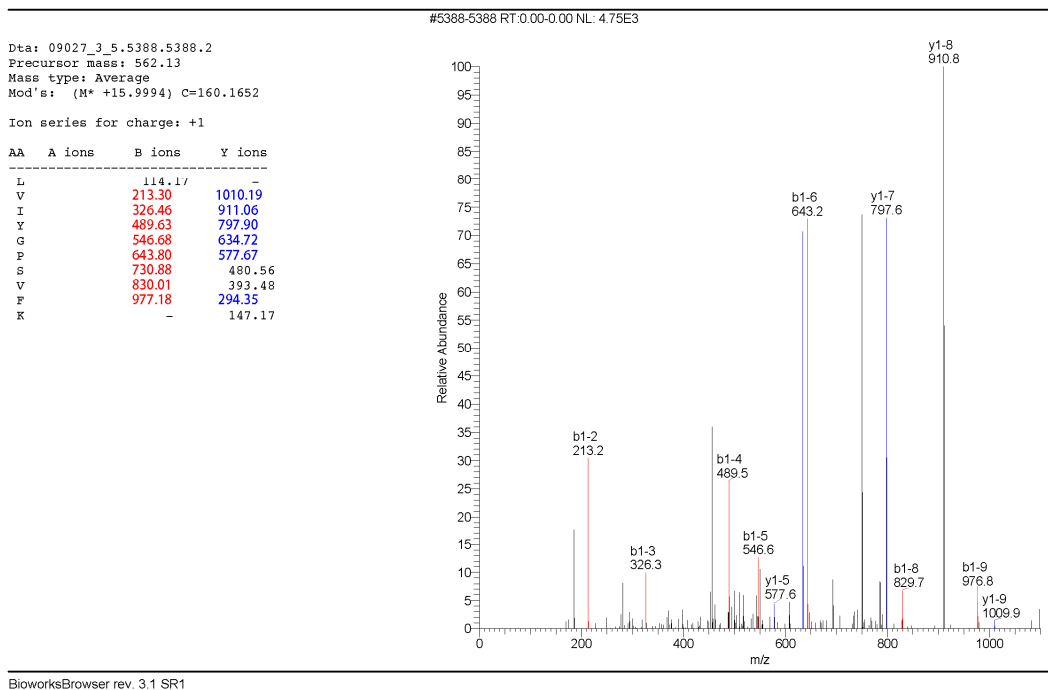


Figure S2. MS/MS analysis of 'LVIYGPSVFK' from TGL.