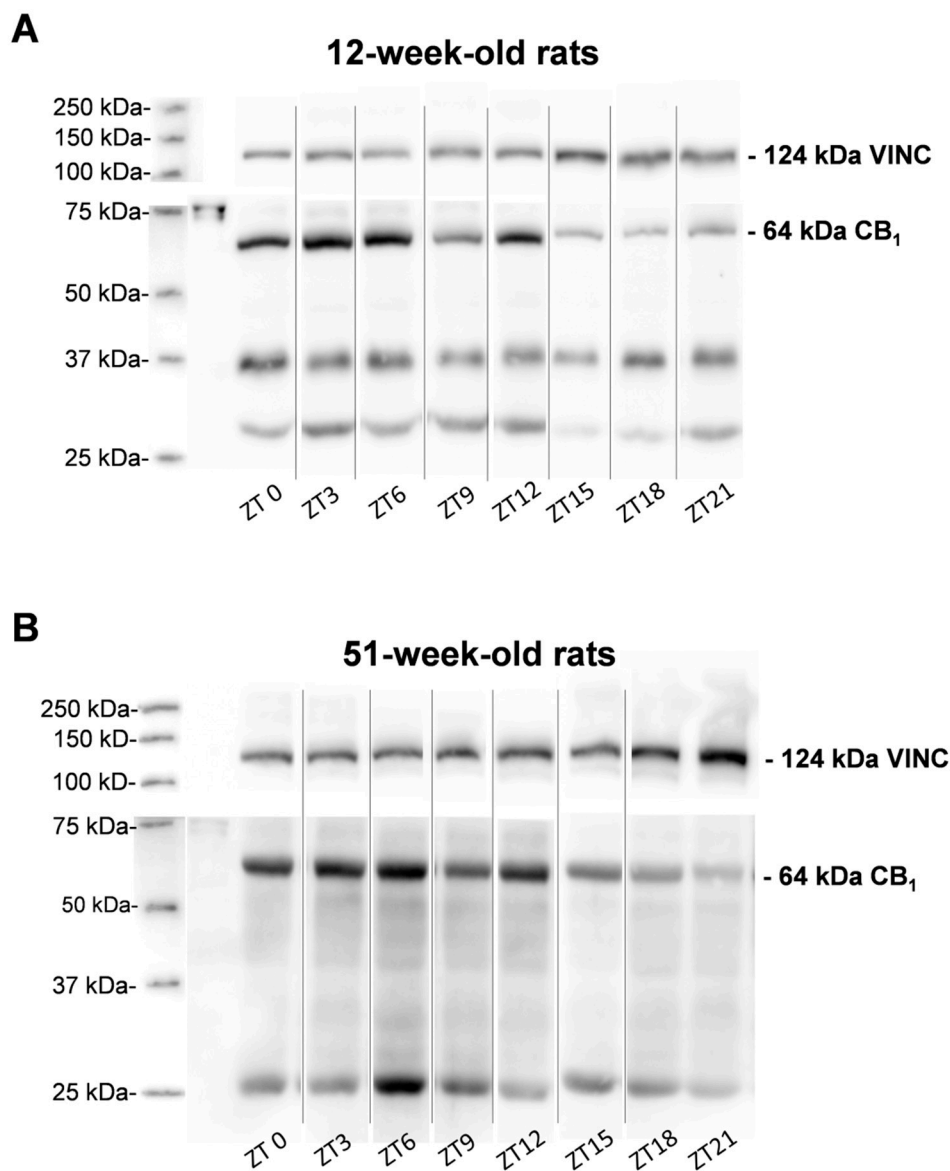
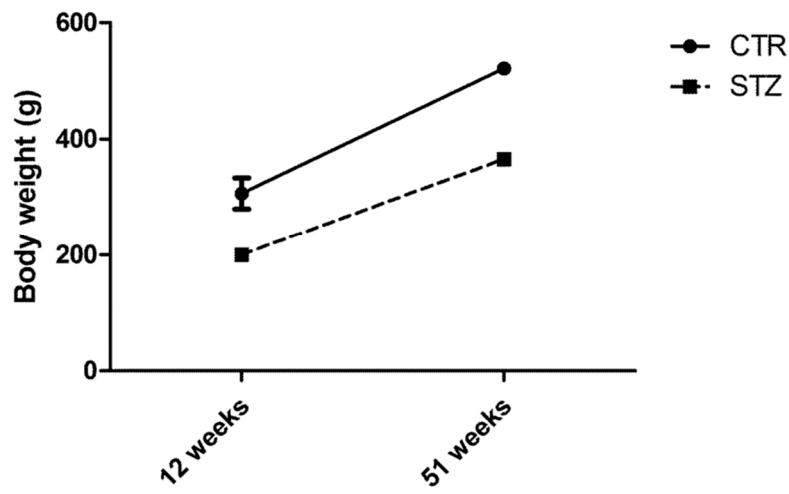
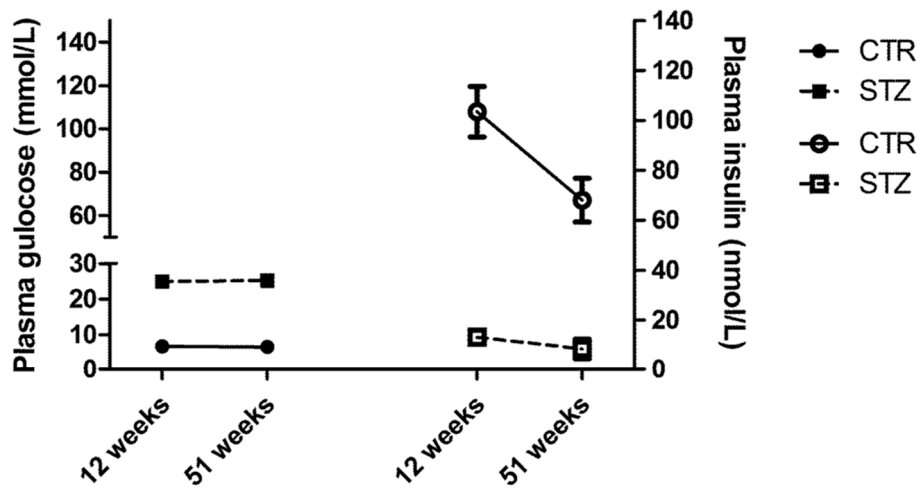


# Supplementary Materials: Daytime-Dependent Changes of Cannabinoid Receptor Type 1 and Type 2 Expression in Rat Liver

Ivonne Bazwinsky-Wutschke, Alexander Zipprich and Faramarz Dehghani



**Figure S1.** Representative Western blots of rat liver tissue demonstrating diurnal expression pattern of CB<sub>1</sub> (64 kDa) in 12- (**A**) and 51-week-old (**B**) rats at each Zeitgeber Time (ZT). Vinculin (VINC) is the standard for normalization.

**A****B**

**Figure S2.** (A) Body weight is reduced in streptozotocin (STZ) treated-rats ( $p < 0.001$ ) compared to Wistar rats (CTR). The body weight increases during aging in rats ( $p < 0.001$ ). (B) Plasma glucose is significantly increased in STZ rats compared to the corresponding normoglycemic control group of Wistar rats ( $p < 0.001$ ). The plasma insulin levels are very low in STZ rats ( $p < 0.001$ ). Insulin is decreased in 51-week-old compared to 12-week-old Wistar rats ( $p < 0.01$ ).