

Fig. S1 Effect of autophagy on apoptosis of the cells after treatment with hypoxia for 2 h. (A) Images of the apoptotic cells demonstrated with EB/AO staining. After treatment with 3-MA, the apoptotic cells in the hypoxic cells increase. Bar = 100 μ m. (B) Statistic result of the number of the apoptotic cells in the hypoxic cells. * $p < 0.05$ vs. control group, # $p < 0.05$ vs. hypoxia group.

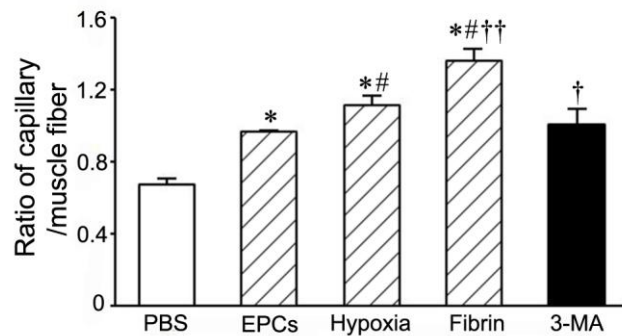


Fig. S2 Statistic result of the density of the microvessels in the ischemic limbs after transplantation. * $p < 0.01$ vs. PBS group, # $p < 0.01$ vs. EPC group, † $p < 0.05$ and †† $p < 0.01$ vs. hypoxia group.

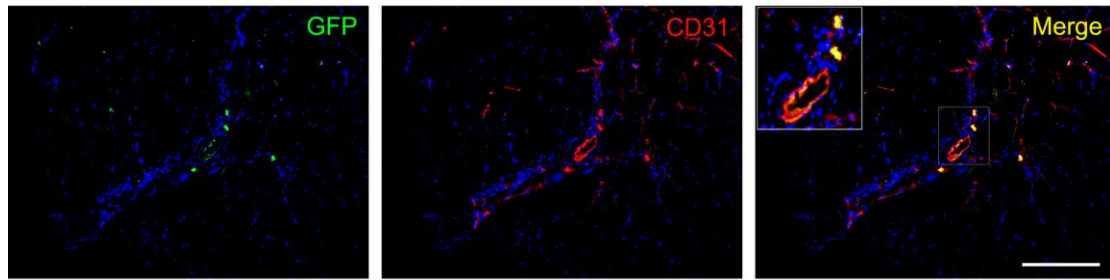


Fig. S3 Location of GFP⁺CD31⁺ cells at the walls of the microvessels. At day 21 after transplantation of GFP-labeled EPCs, expression of CD31 on the cells were examined with immunostaining. Some GFP⁺ cells express CD31 and incorporate into the walls of the microvessels. The large box shows the magnified view of the small box. Bar = 200 μ m.