

**Up-regulation of chemokine receptor CCR4 is associated with Human
Hepatocellular Carcinoma malignant behavior**

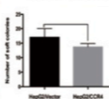
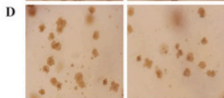
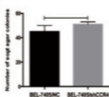
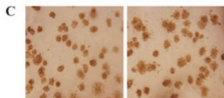
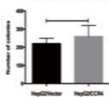
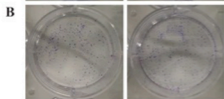
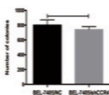
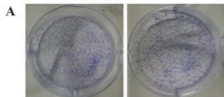
Xi Cheng^{1, 2*}, Huo Wu^{1, 3*}, Zhi-Jian Jin^{1, 2*}, Ding Ma^{1, 2,}, Bai-Yong Shen^{1, 2,}

Cheng-Hong Peng^{1, 2**}, Ren Zhao^{1, 2**} & Wei-Hua Qiu^{1, 2**}

**Supplementary Figure1. CCR4 expression doesn't affect the proliferation of
HCC cells in vitro.**

A&B. Plant clone formation assay doesn't show significantly effect on HCC cell growth for CCR4 down-regulate group or CCR4 up-regulate group. **C&D.** Soft-agar clone formation doesn't show significantly effect on HCC cell growth for CCR4 down-regulate group or CCR4 up-regulate group

Supplementary Data of Figure2A; 5A&D; 6A&B; 7A&C are replicates rather than the original photography of the blots in the main figures, All these blots come from replicate experiments!



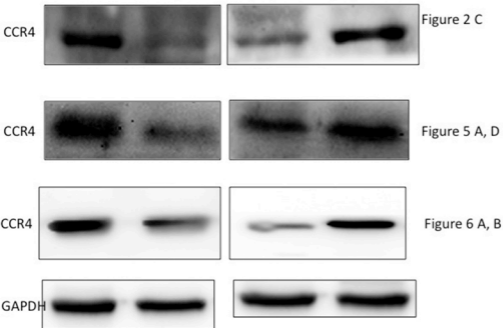
Supplementary Figure1. CCR4 expression does not affect the proliferation of HCC cells *in vitro*.

A&B. Plant clone formation assay doesn't show significantly effect on HCC cell growth for CCR4 down-regulate group or CCR4 up-regulate group.

C&D. Soft-agar clone formation doesn't show significantly effect on HCC cell growth for CCR4 down-regulate group or CCR4 up-regulate group.

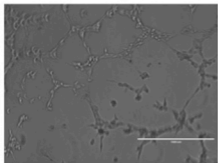
Supplementary supporting data for Figure 2A. 5 A,D and 6 A,B

BEL-7405NC BEL-7405/shCCR4 HepG2/vector HepG2/CCR4

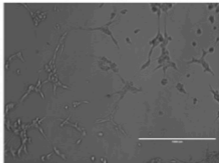


Supplementary supporting data for Figure 3A

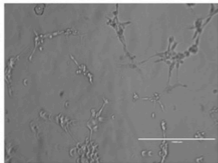
BEL-7405/shNC



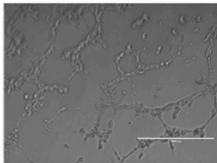
BEL-7405/shCCR4



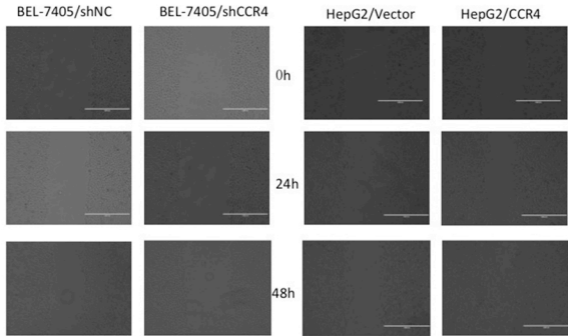
HepG2/vector



HepG2/CCR4

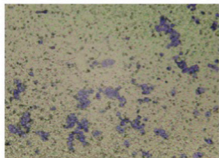


Supplementary supporting data for Figure 4A

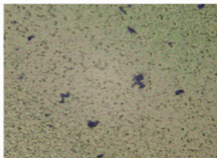


Supplementary supporting data for Figure 4B

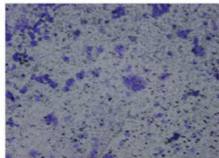
BEL-7405/shNC



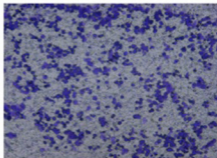
BEL-7405/shCCR4

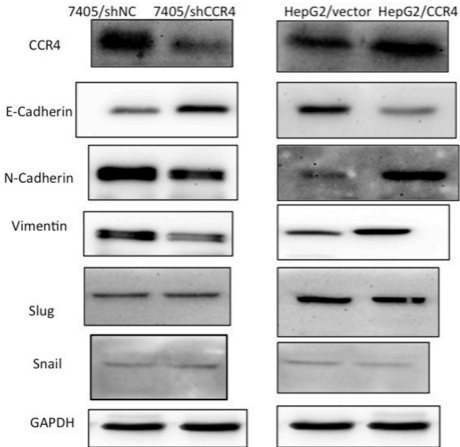


HepG2/vector



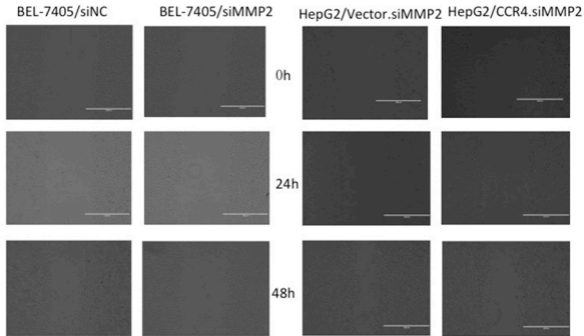
HepG2/CCR4

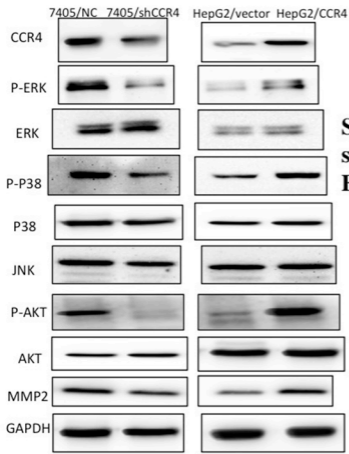




**Supplemental
supporting
data for
Figure
5A&D**

Supplementary supporting data for Figure 6C





**Supplementary
supporting data for
Figure 7.A&C**