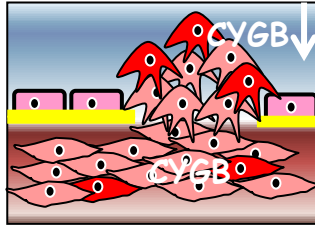
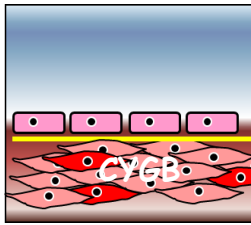


Injury

Required for neointima formation



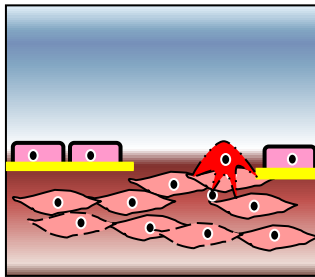
Baseline



EC = Endothelial cells
SMC = Smooth Muscle Cells

~~CYGB~~

No neointima formation



Hypoxia
IL-1 β
IFN- γ

↑ CYGB

NO ↓
ROS ↑

↑ Cleaved caspase-3

↑ SMC apoptosis