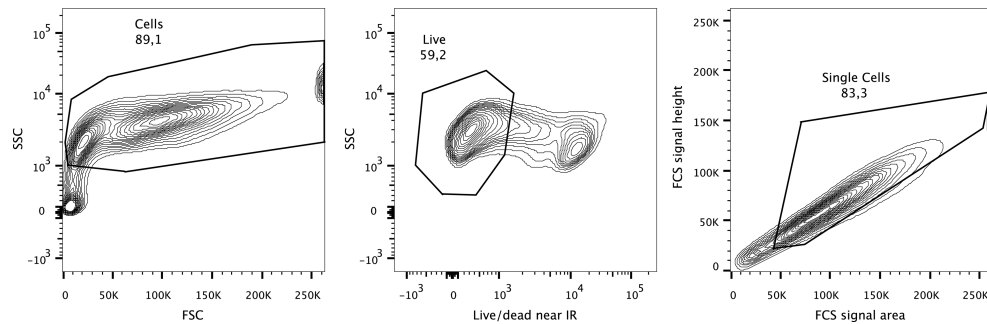
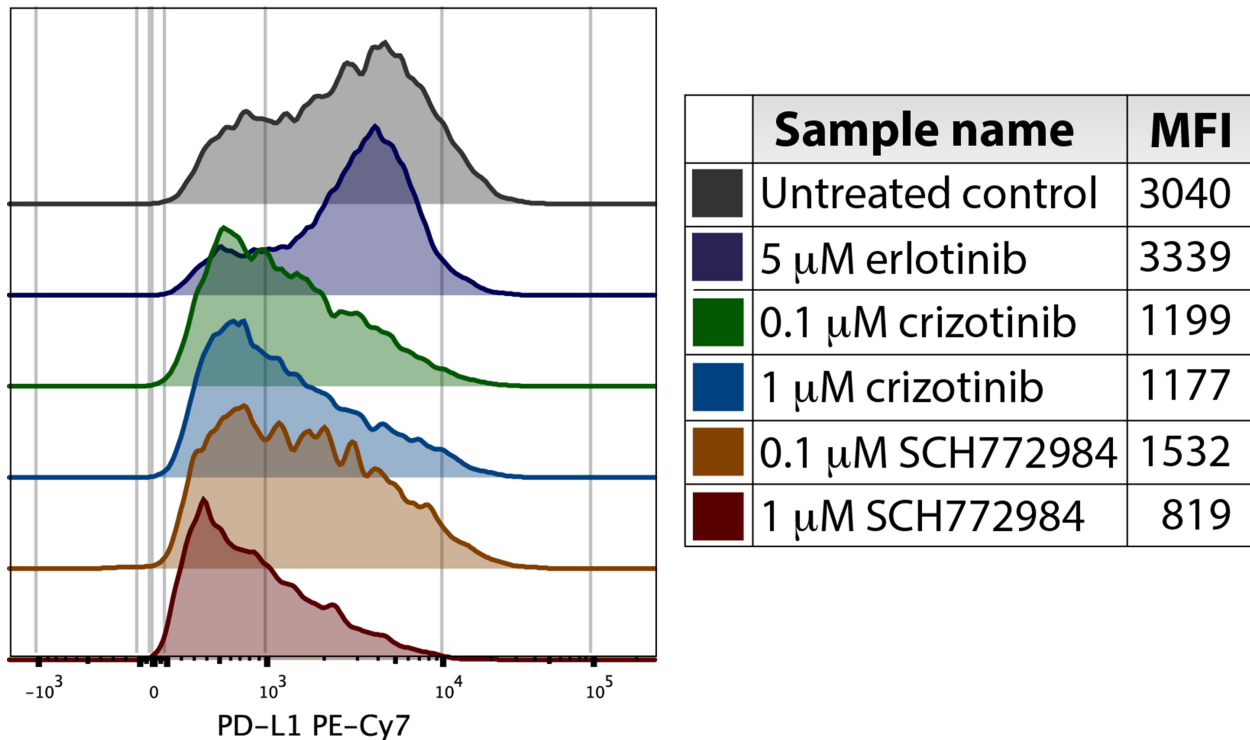


## Increased PD-L1 expression in erlotinib-resistant NSCLC cells with *MET* gene amplification is reversed upon MET-TKI treatment

### SUPPLEMENTARY MATERIALS



**Supplementary Figure 1: The gating strategy used in the present study is shown on representative plots.** First, debris was excluded on a forward scatter (FSC) vs. side scatter plot. Live cells were then identified as Live/dead nIR negative events, and doublets were excluded on a plot of FCS-area vs. FCS-height signals. Events in the gate containing live/single cells were used in further analyses.



**Supplementary Figure 2: A representative histogram and table with MFI values from one flow cytometry analysis.** HCC827ER cells are either left untreated or treated with erlotinib, crizotinib or SCH772984.