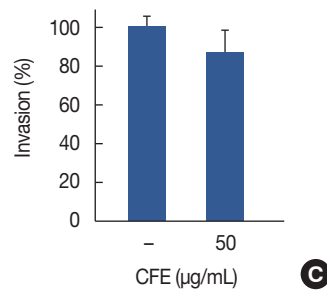
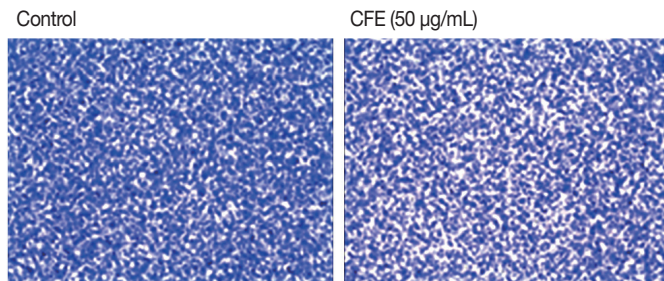
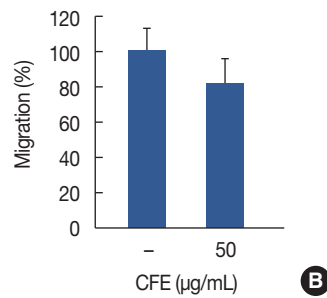
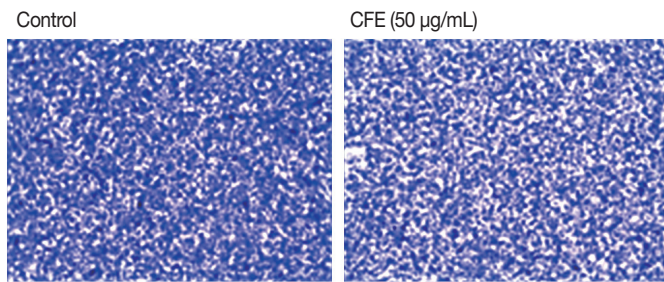
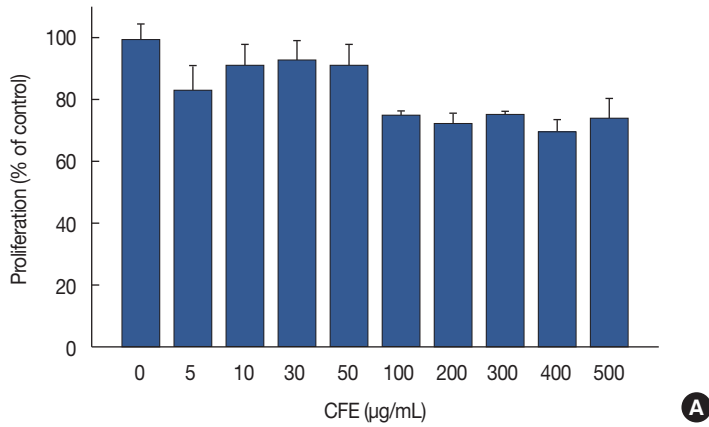


Effects of *Crotonis Fructus* Extract on Breast Cancer Cell Invasion



Supplementary Figure 2. CFE inhibits migration and Matrigel invasion in MDA-MB-231 cells. (A) CFE were treated with indicated concentrations for 24 hours and then assayed using with EZ-cytox cell viability assay kit. To confirm the (B) migration, and (C) Matrigel invasion in MDA-MB-231 cells, cells were seeded in the upper chamber of chamber dishes and were treated with CFE. CFE = *crotonis fructus* extract.